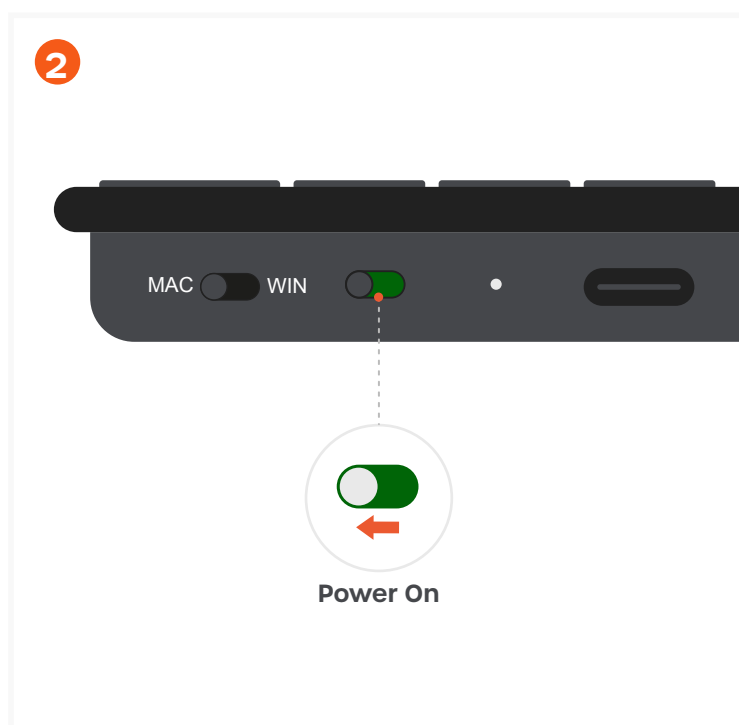


SLIM EX1 WIRELESS KEYBOARD

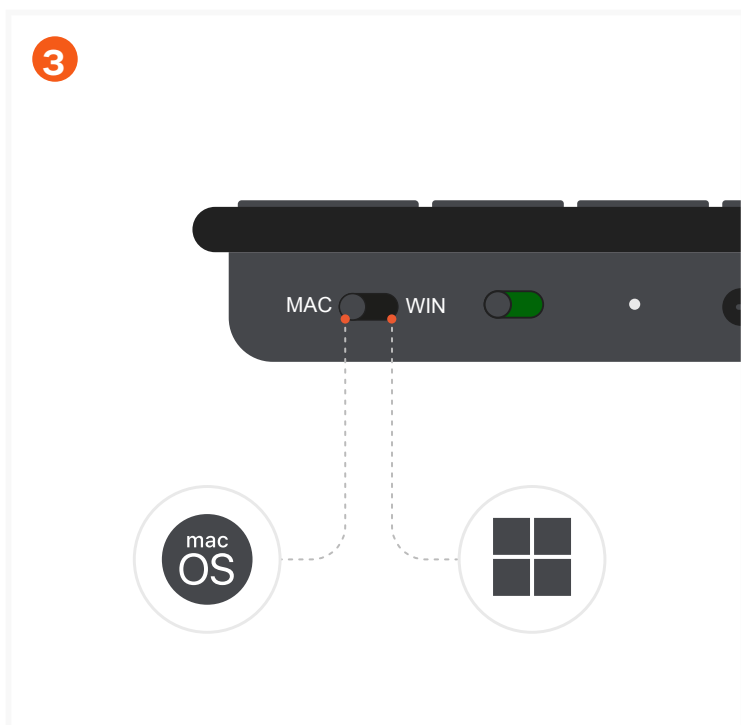
SKU: ST-KEX1C-EN / ST-KEX1S-EN



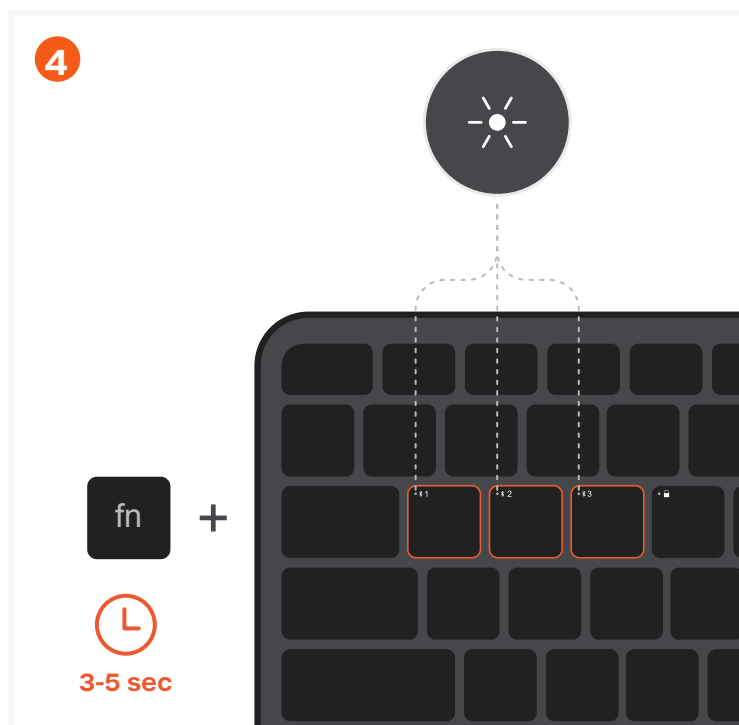
Before use, fully charge the Slim EX1 Keyboard using the included USB-C cable.
The keyboard can be used while charging.



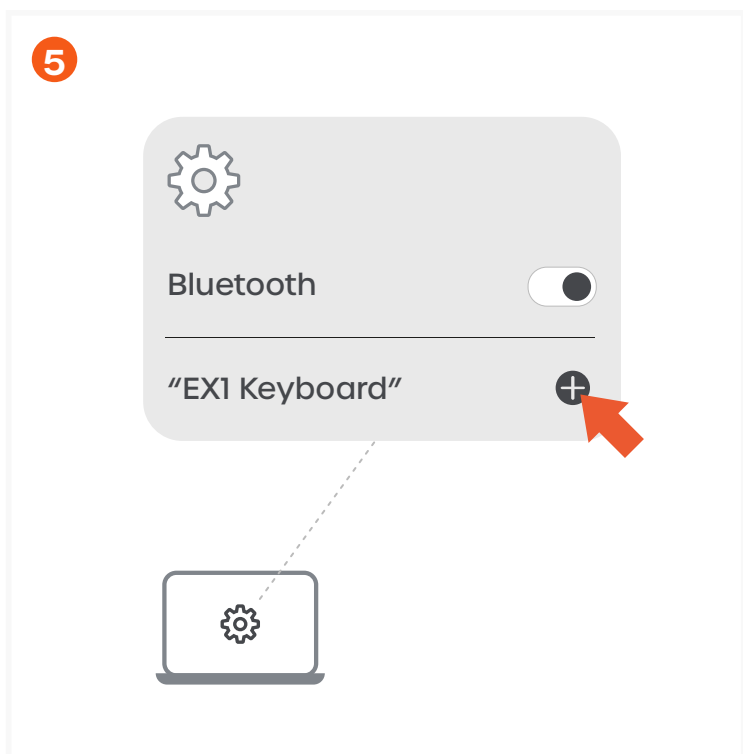
Turn on the keyboard using the power switch on the top edge.



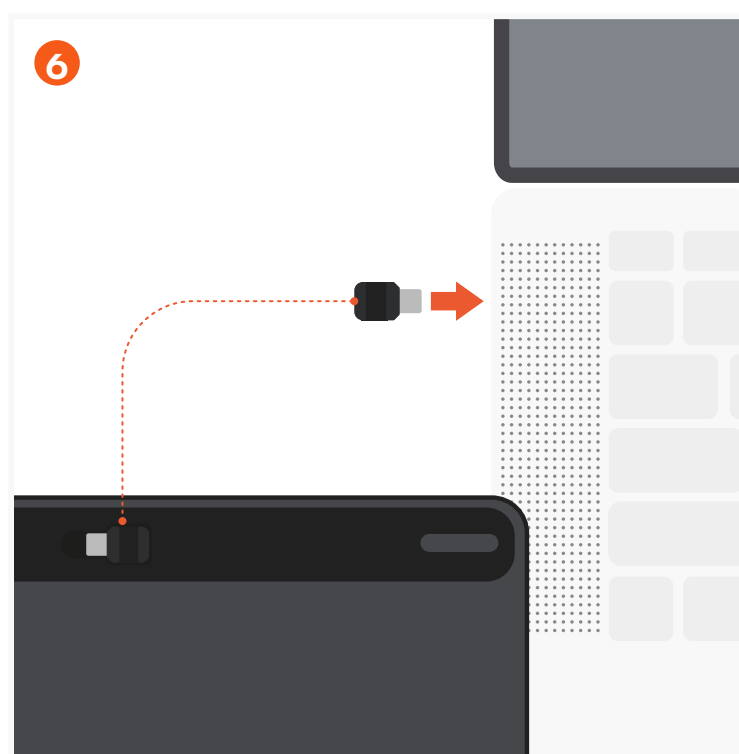
Select the operating system using the dedicated OS switch.



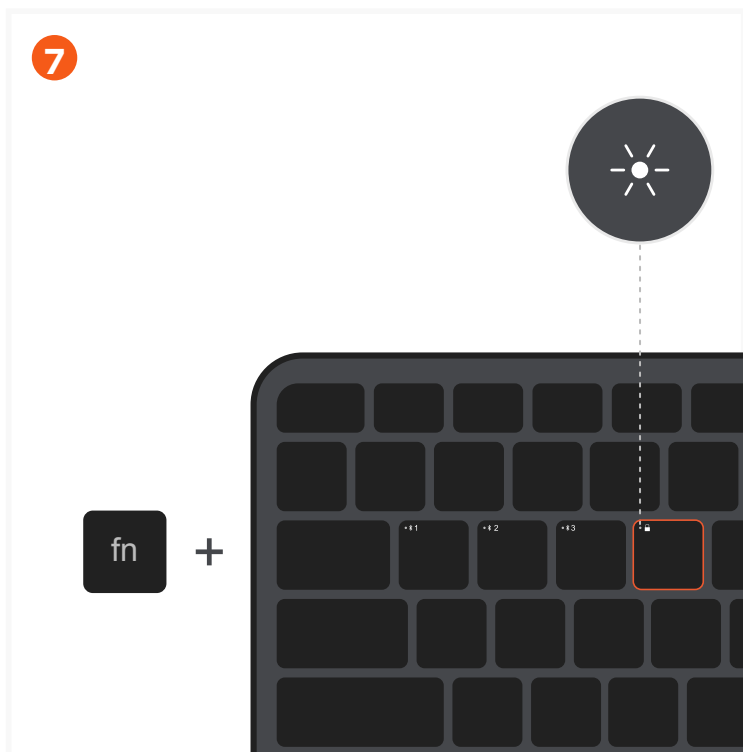
To enter Bluetooth pairing mode, press and hold the FN key, then press one of the Bluetooth keys (1-3) once, and press and hold it again for 3-5 seconds.
The white LED will blink to indicate pairing mode.



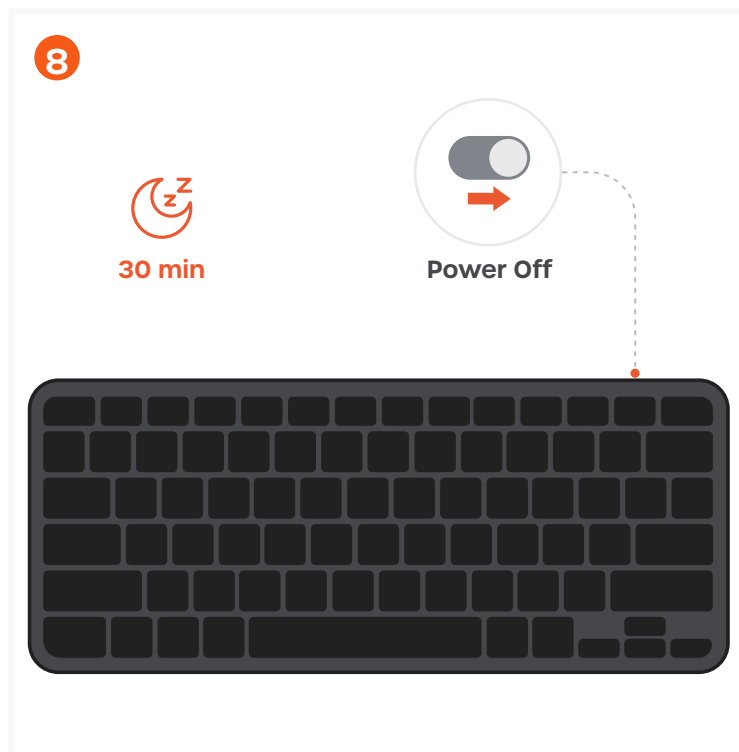
Enable Bluetooth on your device and select "EX1 Keyboard" from the list to complete the connection. Up to three devices can be connected via Bluetooth.



To connect a fourth device, insert the USB-C 2.4GHz dongle into your device.



Press and hold FN, then press the pairing key with the USB dongle icon to activate the fourth connection. The FN key behavior depends on the selected operating system.



After 30 minutes of inactivity, the keyboard will enter sleep mode. Press any key to wake it—the keyboard will reconnect automatically. Turn off the keyboard using the power switch when not in use.