

Dimension: 75 x 145 mm

OUTSIDE

PLUG & PLAY

PLUG & PLAY | PLUG & PLAY | PLUG & PLAY | PLUG & PLAY | TAK ÇALIŞTIR | PLUG & PLAY | PLUG & PLAY | PLUG & PLAY | 플러그&플레이 | 플러그 앤 플레이 | 即插即用 | 即插即用



1. Connect to a laptop

Connectez-vous à un ordinateur portable
Conéctalo a un ordenador portátil
Verbinden mit einem Laptop
Collegare a un computer portatile
Bir dizüstü bilgisayara bağlanın
Подключите к ноутбуку
ラップトップに接続する | 노트북에 연결
连接到笔记本电脑 | 连接到笔记本电脑

2. Connect your devices

Connectez vos appareils
Conecta tus dispositivos
Schließen Sie Ihre Geräte an
Collega i tuoi dispositivi
Cihazlarınızı bağlayın
Conecte seus dispositivos
Подключите ваши устройства
デバイスを接続する | 장치 연결
连接您的设备 | 连接您的设备

IMPORTANT

IMPORTANT | IMPORTANT | WICHTIG | IMPORTANTE | ÖNEMLİ | IMPORTANTE | ВАЖНО | 重要 | 중대한 | 重要事項 | 注意

• USB-C Charging Port will not support data transfer or video output.

• Le port de charge USB-C ne prend pas en charge le transfert de données ou la sortie vidéo.

• El puerto de carga USB-C no admitirá la transferencia de datos o la salida de video.

• Der USB-C-Ladeanschluss unterstützt keine Datenübertragung oder Videoausgabe.

• La porta di ricarica USB-C non supporterà il trasferimento di dati o l'uscita video.

• USB-C Şarj Bağlantı Noktası, veri aktarımını veya video çıkışını desteklemeyecektir.

• A porta de carregamento USB-C não suporta transferência de dados ou saída de vídeo.

• Порт зарядки USB-C не поддерживает передачу данных или вывод видео.

• USB-C充電ポートは、データ転送またはビデオ出力をサポートしません。

• USB-C충전 포트는 데이터 전송 또는 비디오 출력을 지원하지 않습니다.

• USB-C充電端口不支持數據傳輸或視頻輸出。

• USB-C充電端口不支持數據傳輸或視頻輸出。



This device complies with part 15 of the FCC rules. Operation is subject to the following two conditions:

1. This device may not cause harmful interference and
2. This device must accept any interference received, including interference that may cause undesired operation.

Note: This Equipment has been tested and found to comply with the limits for a class B digital device, pursuant to Part 15 of the Federal Communications Commission (FCC) rules. These limits are designed to provide reasonable protection against harmful interference in a residential installation. This equipment generates, uses, and can radiate radio frequency energy and, if not installed and used in accordance with the instructions, may cause harmful interference to radio communications. However, there is no guarantee that interference will not occur in a particular installation. If this equipment does cause harmful interference to radio or television reception, which can be determined by turning the equipment off and on, the user is encouraged to try to correct the interference by one or more of the following measures:

- 1.1. Reorient or relocate the receiving antenna
- 1.2. Increase the separation between the equipment and receiver
- 1.3. Connect the equipment into an outlet on a circuit different from that to which the receiver is connected
- 1.4. Consult the dealer or an experienced radio/TV technician for help

Changes or modifications not expressly approved by the manufacturer could void the user's authority operate the equipment.



Satechi declares that this product is in compliance with the essential requirements and other relevant provisions of applicable EC directives. For Europe, a copy of the Declaration of Conformity for this product may be obtained by visiting www.satechi.net/doc



According to the WEEE (Waste Electrical and Electronic Equipment) Directive, do not dispose of this product as household waste or commercial waste. Waste electrical and electronic equipment should be appropriately collected and recycled as required by practice established for your country. For information on recycling of this product, please contact your local authorities, your household waste disposal service, or the shop where you purchased the product.



Инструкции по безопасности
Импортер: ООО «Дикаус» Адрес: Россия, 105066, Москва, ул. Добролюбовская, д. 5, стр. 1, комната 10. Претензии принимаются по адресу: Россия, 111250, г. Москва, пр-д завода «Серп и Молот», д.б. к.1.
Страницы изготовитель: Китай. Фирма изготовитель: Сарьяна ЛПС 7365 Миссион Джордж Родд Сунт #Джи.г. Сан Диего, Калифорния 92120 США.
Срок службы 1 год. Срок гарантии 1 год с момента продажи. Условия гарантии: соблюдение условий использования. Условия использования: при температуре от +10°C до +35°C, беречь от влаги и механических воздействий, не располагать легковоспламеняющиеся предметы в непосредственной близости с устройством. После использования утилизировать.
Дата изготовления и информация о соответствии требованиям ТР ТС указаны на розничной упаковке изделия.

+1 858 268 1800 support@satechi.com

S A T E C H I

USB-C™ HYBRID W/SSD ENCLOSURE ADAPTER

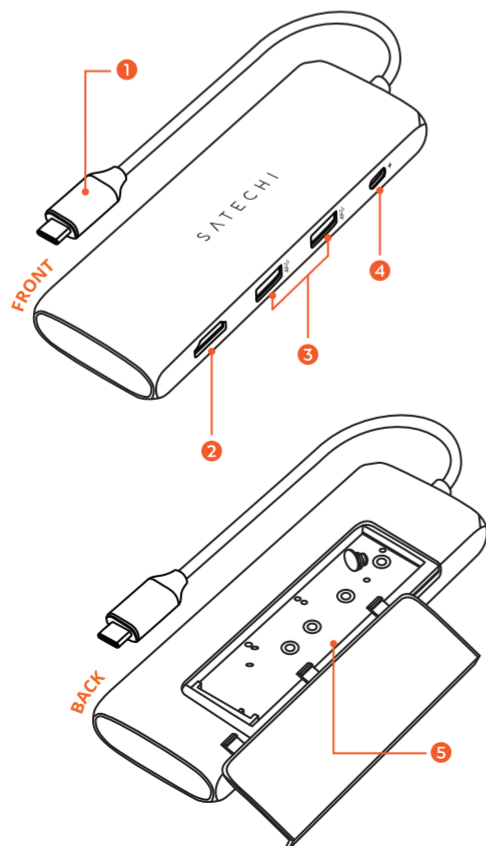


Manuel d'utilisateur | Manual de usuario | Bedienungsanleitung | Manuale dell'utente | Kullanım kılavuzu | Manual do usuário | Руководство пользователя | 유저 매뉴얼 | 사용 설명서 | 用戶手冊 | 用戶手冊

INSIDE

FUNCTIONS

FONCTIONS | FUNCIONES | FUNKTIONEN | FUNZIONI | FONKSIYONLAR | FUNÇÕES | ФУНКЦИИ | 機能 | 기능 | 功能 | 功能



1. USB-C Cable

Cable USB-C | Cable USB C | USB-Kabel | Cabo USB C | USB C kablo | cabo USB C | Кабель USB-C | USB-C ケーブル | USB-C 케이블 | USB-C 接线

2. 4K@60Hz HDMI Video Port

Sortie Video HDMI 4K@60Hz | Puerto de video HDMI 4K@60Hz | 4K@60Hz HDMI-Videoanschluss | Porta video HDMI 4K@60Hz | 4K@60Hz HDMI Video girişi | Porta de Video HDMI 4K@60Hz | Видео порт HDMI 4K 60 Гц | HDMI 4K@60Hz Видео出力ポート | 4K@60Hz HDMI 비디오 포트 | 4K@60Hz HDMI 視頻輸出 | 4K@60Hz HDMI 視頻輸出

3. 2X USB-A 3.1 Ports

Ports USB-A | Puertos USB-A | USB-A Anschlüsse | Porte USB-A | USB-A Bağlantı Noktaları | Portas USB-A | Порты USB-A | USB-A 포트 | USB-A端口 | USB-A端口

4. USB-C PD Port (up to 100W)

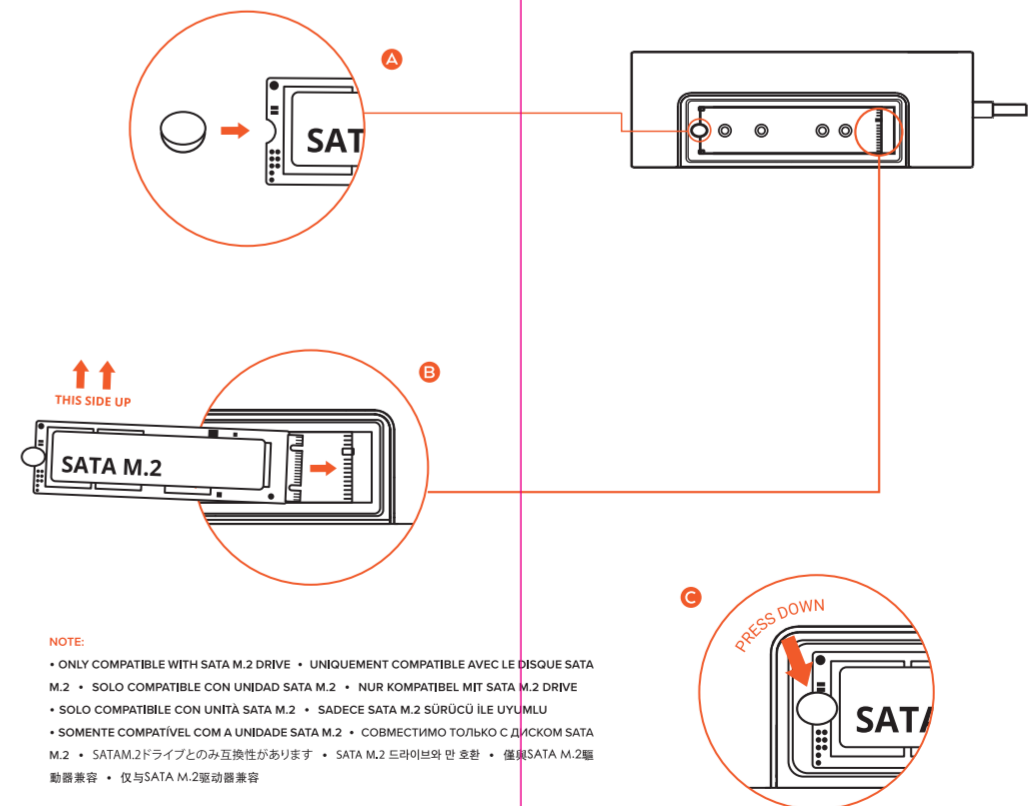
Port de chargement USB type-c (jusqu'à 100W) | Puerto de carga USB-C (hasta 100 W) | USB-C-Ladeanschluss (bis zu 100W) | Porta di ricarica USB-C (fino a 100W) | USB-C Şarj Girişi(100W'a kadar) | Porta de carregamento USB-C (até 100W) | Порт зарядки USB-C (до 100 Вт) | USB-C 充電ポート(最大100W) | USB-C충전 포트 (최대 100W) | USB-C 充電接口(高達100W) | USB-C 充電接口(高達100W)

5. M.2 SATA SSD Card Enclosure

Boîtier Pour Carte SSD | Carcasa de tarjeta SSD | SSD-Kartengehäuse | Alloggiamento per scheda SSD | SSD Kart Muhafazası | Caixa de cartão SSD | Корпус для SSD накопителя | SSD 카드엔클로저 | SSD 卡外壳 | SSD 卡外壳

SSD INSTALLATION

SSD INSTALLATION | INSTALACIÓN SSD | SSD-INSTALLATION | INSTALLAZIONE SSD | SSD KURULUMU | INSTALAÇÃO SSD | УСТАНОВКА SSD | SSD のインストール | SSD 설치 | SSD安裝 | SSD安裝



NOTE:
• ONLY COMPATIBLE WITH SATA M.2 DRIVE • UNIQUEMENT COMPATIBLE AVEC LE DISQUE SATA M.2 • SOLO COMPATIBLE CON UNIDAD SATA M.2 • NUR KOMPATIBEL MIT SATA M.2 DRIVE • SOLO COMPATIBILE CON UNITÀ SATA M.2 • SADECE SATA M.2 SÜRUCÜ İLE UYUMLU • SOMENTE COMPATÍVEL COM A UNIDADE SATA M.2 • СОВМЕСТИМО ТОЛЬКО С ДИСКОМ SATA M.2 • SATAM.2드라이브와의み互換性があります • SATA M.2 드라이브와만 호환 • 僅限SATA M.2驅動器兼容 • 仅与SATA M.2驱动兼容