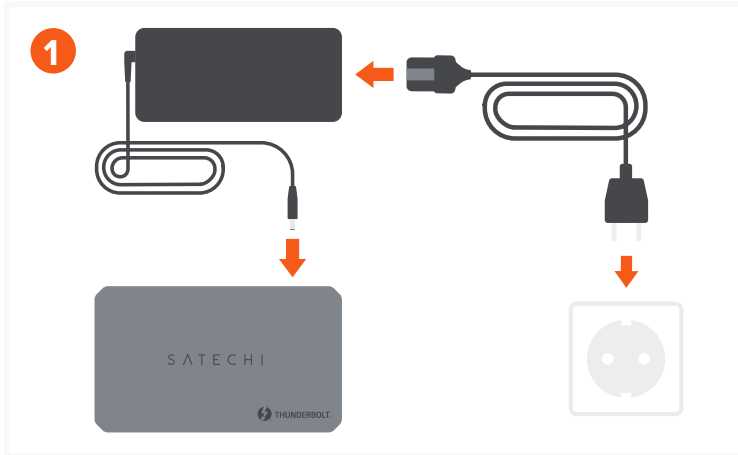


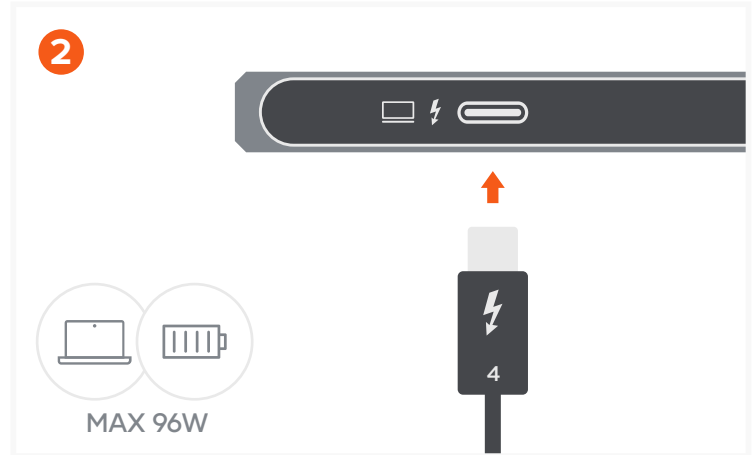
## QUICK GUIDE

# THUNDERBOLT 4 SLIM HUB PRO

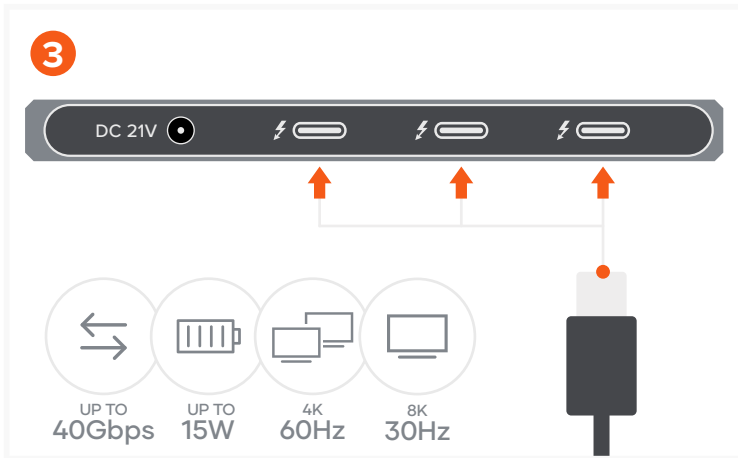


Connect the power adapter from the Hub's DC port directly to a wall outlet.

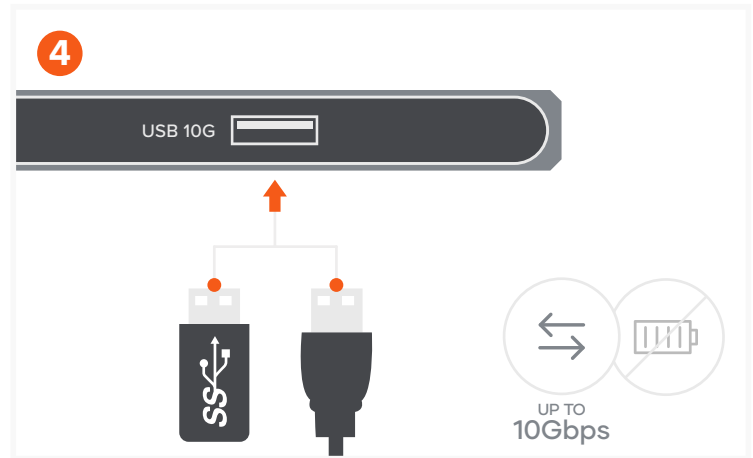
When connected to power, the LED will light up orange until the host device is connected.



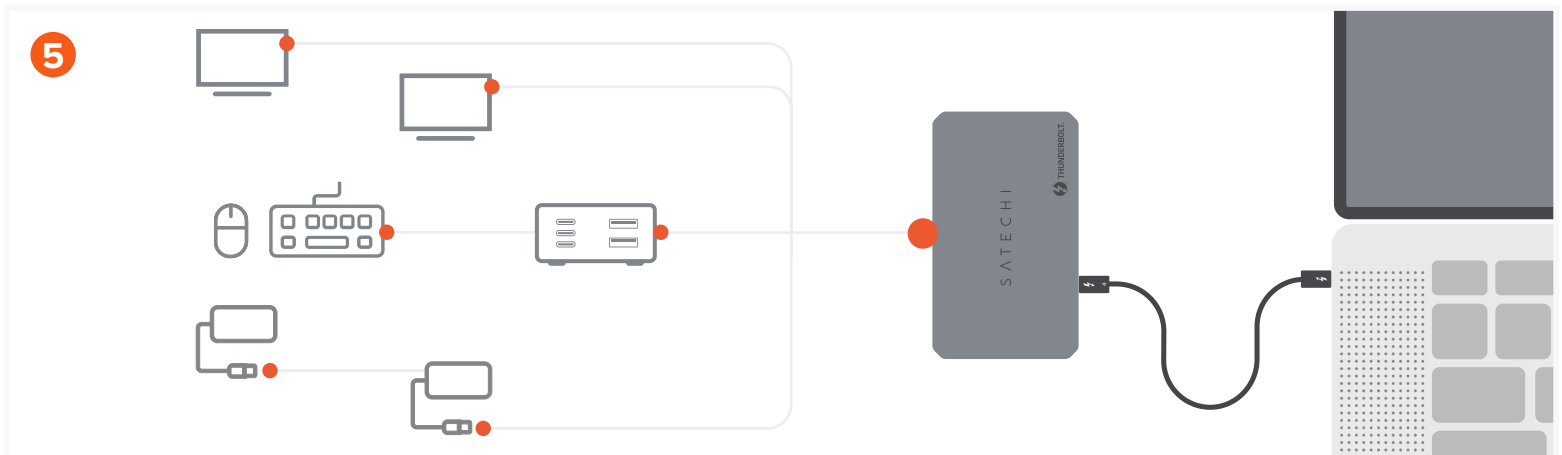
Using the included Thunderbolt 4 cable, connect the hub to your host device from its Thunderbolt 4 host port located at the front of the hub. Once the host device is connected, the LED color will change to green. Features 96W max pass-through charging to the host device.



Connect up to three USB-C devices to the hub's Thunderbolt 4 ports. Supports up to 40Gbps, 15W charging, dual 4K video output up to 60Hz total or single 8K video output at 30Hz. macOS doesn't support 8K video output.



USB 3.2 Gen 2 port allows for transfer data at up to 10Gbps speed. Does not support charging or Apple SuperDrive.



Allows for daisy-chaining up to 6 devices

 a. Can connect USB-C to HDMI adapter / cable for HDMI support

 b. Can connect USB-C to DisplayPort adapter / cable for DisplayPort support

 c. Can connect to other adapters and hubs for more port connectivity

**Disclaimer: macOS 11 or higher required when using with Macs**