

# Dimension: 60 x 110 mm

## OUTSIDE



This device complies with part 15 of the FCC rules. Operation is subject to the following two conditions:  
 1. This device may not cause harmful interference and  
 2. This device must accept any interference received, including interference that may cause undesired operation.  
**Note:** This Equipment has been tested and found to comply with the limits for a class B digital device, pursuant to Part 15 of the Federal Communications Commission (FCC) rules. These limits are designed to provide reasonable protection against harmful interference in a residential installation. This equipment generates, uses, and can radiate radio frequency energy and, if not installed and used in accordance with the instructions, may cause harmful interference to radio communications. However, there is no guarantee that interference will not occur in a particular installation. If this equipment does cause harmful interference to radio or television reception, which can be determined by turning the equipment off and on, the user is encouraged to try to correct the interference by one or more of the following measures:  
 1.1. Reorient or relocate the receiving antenna  
 1.2. Increase the separation between the equipment and receiver  
 1.3. Connect the equipment into an outlet on a circuit different from that to which the receiver is connected  
 1.4. Consult the dealer or an experienced radio/TV technician for help

Changes or modifications not expressly approved by the manufacturer could void the user's authority operate the equipment.



Satechi declares that this product is in compliance with the essential requirements and other relevant provisions of applicable EC directives. For Europe, a copy of the Declaration of Conformity for this product may be obtained by visiting <https://satechi.net/support/doc>

**CAN ICES-003 (B)/NMB-003(B)**  
 This Class B digital apparatus complies with Canadian ICES-003. (Cet appareil numérique de la Classe B conforme à la norme NMB-003 au Canada).

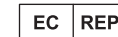


### NEED HELP?

BESOIN D'AIDE POUR? | ¿NECESITA AYUDA? |  
 BRAUCHEN SIE HILFE? | HAI BISOGNO DI AIUTO? |  
 YARDIMA MI İHTİYACINIZ VAR? | PRECISO DE AJUDA? |  
 НУЖНА ПОМОЩЬ? | 助けが必要? | 도움이 필요하다? |  
 需要幫忙? | 需要幫忙?

Manufacturer:  
 7365 Mission Gorge Rd. Ste. G  
 San Diego CA 92120 USA  
 +1 858 268 1800  
 support@satechi.com  
 www.satechi.net

UK Representative:  
 CMS Distribution Ltd.  
 CasOne Freeway Drive  
 CASTLEFORD W Yorkshire  
 WF10 5EJ, United Kingdom  
 +44 20 8962 2500  
 EORI: GB117202262000



Authorized Representative:  
 QIMA EUROPE AR GmbH  
 Schleidenstraße 1  
 22083 Hamburg  
 GERMANY

S A T E C H I

## 72W TYPE-C PD CAR CHARGER ADAPTER USER MANUAL

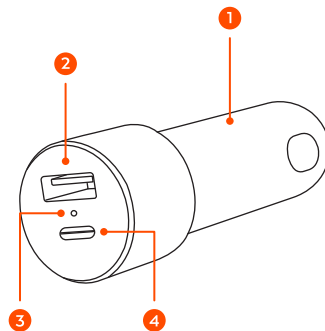


Manuel de l'utilisateur | Manual de Usuario |  
 Benutzerhandbuch | Manuale utente | Kullanım  
 Kılavuzu | Manual de usuário | Руководство  
 пользователя | ユーザーマニュアル |  
 사용자 매뉴얼 | 用户说明 | 使用者說明

## INSIDE

### FUNCTIONS

FONCTIONS | FUNCIONES | FUNKTIONEN |  
 FUNZIONI | FONKSİYONLAR | FUNÇÕES |  
 ФУНКЦИИ | 機能 | 기능 | 功能 | 功能



#### 1. 12-24V DC Car Adapter

Adaptateur de Voiture 12-24V DC | Adaptador para  
 coche de 12-24V DC | 12-24V DC Autoadapter |  
 Adattatore per auto da 12-24V CC | 12-24V DC Araç  
 Adaptörü | Adaptador para carro 12-24V DC |  
 Автомобильный адаптер постоянного тока  
 12-24V B | 12-24VDCカーアダプター | 12-24V DC  
 자동차 어댑터 | 12-24V直流車載適配器 | 12-24V  
 直流車載適配器

#### 2. USB-A Charging Port (Up to 12W)

Port de charge USB-A | Puerto de carga USB-A | USB-A-  
 Ladeanschluss | Porta di ricarica USB-A | USB-A Şarj  
 Portu | Porta de carga USB-A | Порт зарядки USB-A |  
 USB-A充電ポート | USB-A 충전 포트 | USB-A 充電端口  
 | USB-A 充電端口

#### 3. LED Indicator

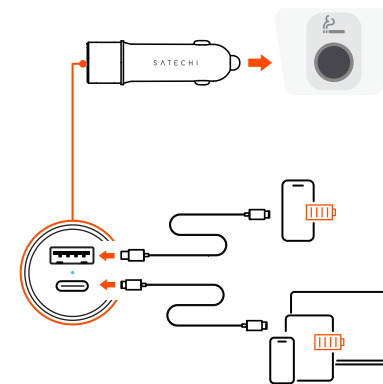
Indicateur LED | Indicador LED | LED-Anzeige | Indicatore  
 LED | LED göstergesi | Indicador LED | Светодиодный  
 индикатор | LED インジケータ | LED 표시기 | LED 指  
 示燈 | LED 指示灯

#### 4. USB-C Charging Port (Up to 60W)

Port de charge USB-C | Puerto de carga USB-C | USB-C-  
 Ladeanschluss | Porta di ricarica USB-C | USB-C Şarj  
 Portu | Porta de carga USB-C | Порт зарядки USB-C |  
 USB-C充電ポート | USB-C 충전 포트 | USB-C 充電端口  
 | USB-C 充電端口

### CHARGING YOUR DEVICES

CHARGEZ VOS APPAREILS | CARGUE SUS  
 DISPOSITIVOS | LADEN SIE IHRE GERÄTE AUF |  
 RICARICA DEI DISPOSITIVI | CİHAZLARINIZI ŞARJ  
 EDİN | CARREGAR OS SEUS DISPOSITIVOS |  
 ЗАРЯДКА УСТРОЙСТВ | デバイスの充電 | 디바이스  
 충전 | 為裝置充電 | 为设备充电



⚡ CHARGING CABLE NOT INCLUDED  
 CÂBLE DE CHARGE NON INCLUS

### IMPORTANT

IMPORTANT | IMPORTANTE | WICHTIG |  
 IMPORTANTE | ÖNEMLİ | IMPORTANTE | ВАЖНО  
 | 重要 | 중요한 | 重要信息 | 重要訊息

• Please use original or certified cables for charging.

• Veuillez utiliser des câbles d'origine ou certifiés pour le chargement.

• Utilice cables originales o certificados para cargar.  
 • Bitte verwenden Sie zum Laden originale oder zertifizierte Kabel.

• Si prega di utilizzare cavi originali o certificati per la ricarica.

• Lütfen şarj için orijinal veya sertifikalı kablolar kullanın.

• Use cabos originais ou certificados para carregar.

• Пожалуйста, используйте для зарядки оригинальные или сертифицированные кабели.

• 充電には純正または認定済のケーブルを使用してください。

• 충전에는 정품 또는 인증된 케이블을 사용하십시오.

• 請使用原裝或經過認證的充電線。

• 請使用原裝或經過認證的充電線。