

# Dimension: 70 x 120 mm

## OUTSIDE



This device complies with part 15 of the FCC rules. Operation is subject to the following two conditions:

1. This device may not cause harmful interference and
2. This device must accept any interference received, including interference that may cause undesired operation.

Note: This Equipment has been tested and found to comply with the limits for a class B digital device, pursuant to Part 15 of the Federal Communications Commission (FCC) rules. These limits are designed to provide reasonable protection against harmful interference in a residential installation. This equipment generates, uses, and can radiate radio frequency energy and, if not installed and used in accordance with the instructions, may cause harmful interference to radio communications. However, there is no guarantee that interference will not occur in a particular installation. If this equipment does cause harmful interference to radio or television reception, which can be determined by turning the equipment off and on, the user is encouraged to try to correct the interference by one or more of the following measures:

- 1.1. Reorient or relocate the receiving antenna
- 1.2. Increase the separation between the equipment and receiver
- 1.3. Connect the equipment into an outlet on a circuit different from that to which the receiver is connected
- 1.4. Consult the dealer or an experienced radio/TV technician for help

Changes or modifications not expressly approved by the manufacturer could void the user's authority to operate the equipment.



Satechi declares that this product is in compliance with the essential requirements and other relevant provisions of applicable EC directives. For Europe, a copy of the Declaration of Conformity for this product may be obtained by visiting <https://satechi.net/support/doc>



According to the WEEE (Waste Electrical and Electronic Equipment) Directive, do not dispose of this product as household waste or commercial waste. Waste electrical and electronic equipment should be appropriately collected and recycled as required by practices established for your country. For information on recycling of this product, please contact your local authorities, your household waste disposal service, or the shop where you purchased the product.

**CAN ICES-003 (B)/NMB-003(B)**  
This Class B digital apparatus complies with Canadian ICES-003.  
(Cet appareil numérique de la Classe B conforme à la norme NMB-003 du Canada.)

### NEED HELP?

BESOIN D'AIDE? | ¿NECESITA AYUDA? | BENÖTIGEN SIE HILFE? | HAI BISOGNO DI AIUTO? | YARDIMA MI İHTİYACINIZ VAR? | POTRZEBUJĘ POMOCY? | PRECISA DE AJUDA? | НУЖНА ПОМОЩЬ? | 助けが必要ですか? | 도움이 필요하십니까? | 需要幫助? | 需要帮助?

Manufacturer:  
7365 Mission Gorge Rd. Ste. G  
San Diego, CA 92120, USA  
+1 858 268 1800  
support@satechi.com  
www.satechi.net

EU Authorized Representative:  
Chemical Inspection and Regulation  
Service Limited  
CIRS, Regus Harcourt Centre  
Dublin, Ireland, D02 HW77  
+353 1 477 3710

UK Representative:  
Chemical Inspection and Regulation  
Service UK Ltd.  
Unit 536, Salisbury House  
London Wall, London, EC2M 5SQ  
+44 20 3289 6395

# SATECHI

## 40W DUAL USB-C PD CAR CHARGER

### USER MANUAL

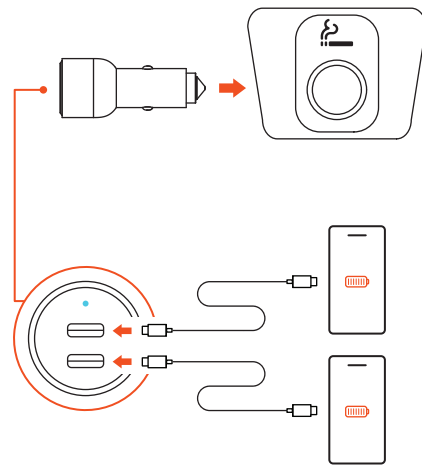


Manuel de l'utilisateur | Manual de usuario | Benutzerhandbuch | Manuale utente | Kullanım kılavuzu | Instrukcja obsługi | Manual de usuário | Руководство пользователя | ユーザーマニュアル | 사용자 매뉴얼 | 使用者說明 | 用戶說明

## INSIDE

### CHARGING YOUR DEVICES

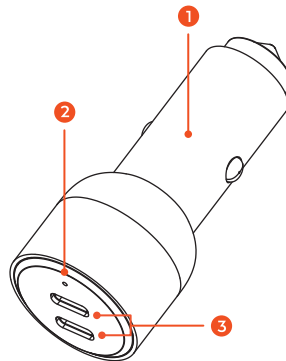
CHARGER VOS APPAREILS | CARGUE SUS DISPOSITIVOS | AUFLADEN IHRER GERÄTE | CARICARE I TUOI DISPOSITIVI | CİHAZLARINIZI ŞARJ ETME | ŁADOWANIE URZĄDZEŃ | CARREGANDO SEUS DISPOSITIVOS | ЗАРЯДКА ВАШИХ УСТРОЙСТВ | デバイスの充電 | 장치 충전 | 为您的設備充電 | 为您的设备充电



**⚡ CHARGING CABLE NOT INCLUDED**  
**⚡ CÂBLE DE CHARGE NON INCLUS**

### FUNCTIONS

FONCTIONS | FUNCIONES | FUNKTIONEN | FUNZIONI | FONKSIYONLAR | FUNKCJE | FUNÇÕES | ФУНКЦИИ | 機能 | 기능 | 功能 | 功能



### 1. 12V DC Car Adapter

Adaptateur Voiture 12V DC | Adaptador para Coche de 12 V CC | 12V DC Autoadapter | Adattatore per Auto da 12 V CC | 12V DC Araç Adaptörü | Zasilacz Samochodowy 12 V DC | Adaptador de 12V DC para Automóvel | Автомобильный адаптер постоянного тока 12 В | 12VDCカーアダプター | 12V DC 자동차 어댑터 | 12V 直流車載適配器 | 12V 直流车載适配器

### 2. Power LED Indicator

Indicateur LED d'alimentation | Indicador LED de Encendido | Power-LED-Anzeige | Indicatore LED di Alimentazione | Güç LED Göstergesi | Wskaźnik LED Zasilania | Indicador LED Encendido | Светодиодный индикатор Энсендидо | 電源LED インジケーター | 전원 LED 표시기 | 電源 LED 指示燈 | 電源 LED 指示灯

### 3. 2X USB-C PD Ports (20W each)

Ports USB-C PD (20W chacun) | Puertos USB-C PD (20W cada uno) | USB-C-PD-Anschlüsse (je 20 W) | Porte USB-C PD (20 W ciascuna) | USB-C PD Portları (Her Biri 20W) | Porty USB-C PD (20W każdy) | Portas USB-C PD (20 W cada) | Порты USB-C PD (по 20 Вт каждый) | USB-C PD 포트 (各20W) | USB-C PD 포트 (각각 20W) | USB-C PD 端口 (每個 20W) | USB-C PD 端口 (每个20W)

### IMPORTANT

IMPORTANT | IMPORTANTE | WICHTIG | IMPORTANTE | ÖNEMLİ | WAŻNY | IMPORTANTE | ВАЖНО | 重要 | 중요한 | 重要訊息 | 重要信息

- Please use original or certified cables for charging.
- Veuillez utiliser des câbles d'origine ou certifiés pour le chargement.
- Utilice cables originales o certificados para cargar.
- Bitte verwenden Sie zum Laden originale oder zertifizierte Kabel.
- Si prega di utilizzare cavi originali o certificati per la ricarica.
- Lütfen şarj için orijinal veya sertifikalı kablolar kullanın.
- Do ładowania należy używać oryginalnych lub certyfikowanych kabli.
- Use cabos originais ou certificados para carregar.
- Пожалуйста, используйте для зарядки оригинальные или сертифицированные кабели.
- 充電には純正または認定済のケーブルを使用してください。
- 충전에는 정품 또는 인증된 케이블을 사용하십시오.
- 請使用原裝或經過認證的充電線。
- 请使用原裝或经过认证的充电线。