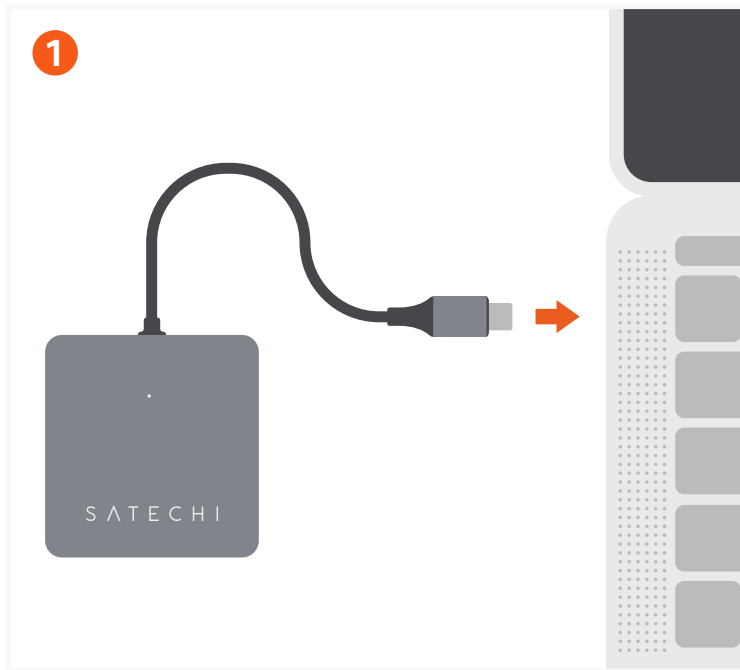
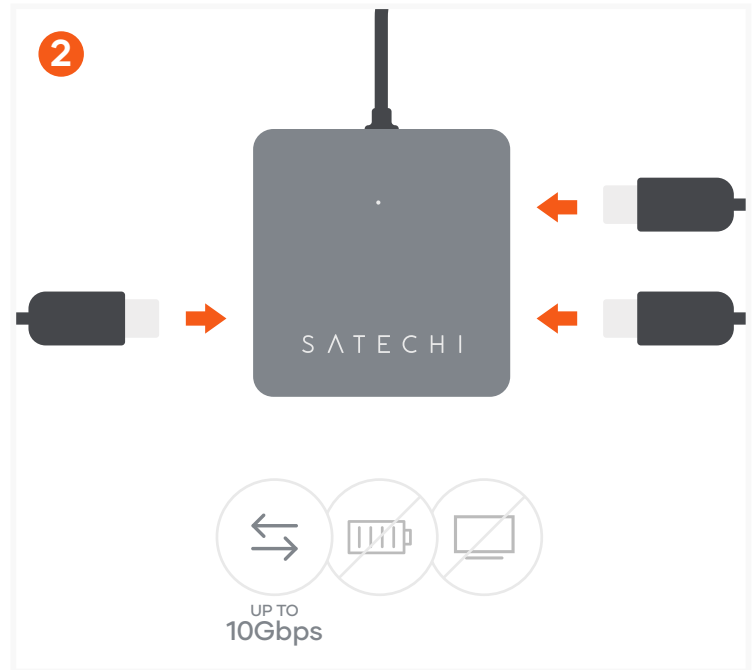


QUICK GUIDE

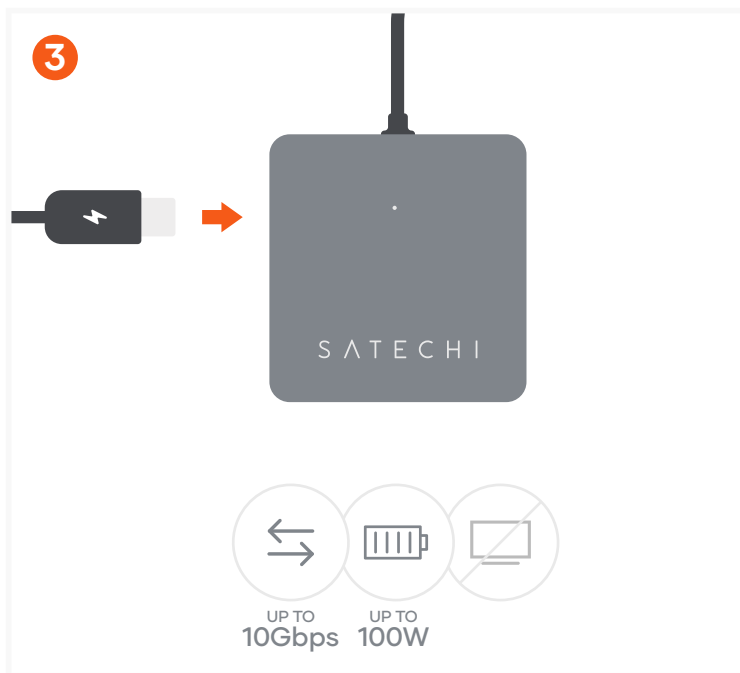
4-IN-1 USB-C HUB WITH PD



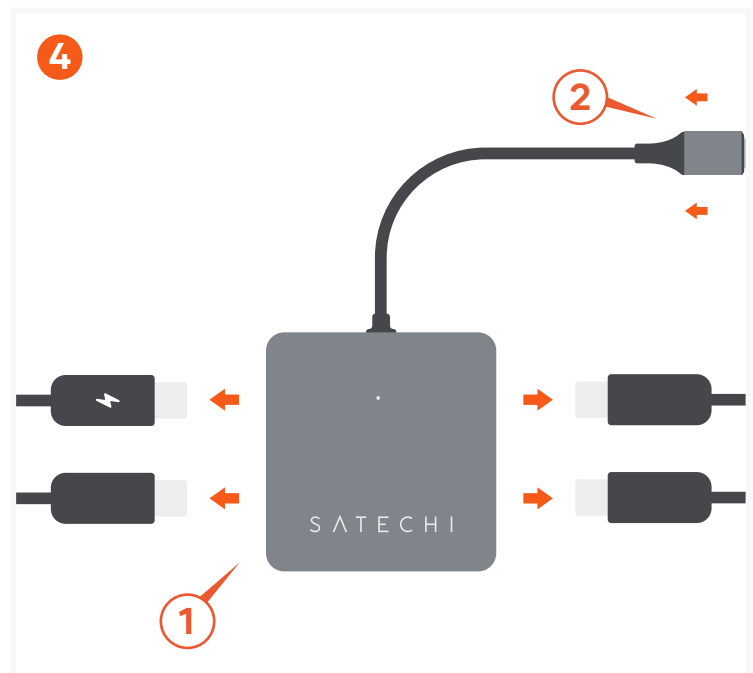
Connect the hub to the host device.
The LED Indicator should turn on once connected.



Connect up to 3 USB-C devices for fast data transfers or backups – up to 10Gbps each.
These ports do not support charging or video output.
These ports do not support CD/DVD drives or Apple SuperDrive.



Connect power to the USB-C PD/Data port for charging.
Supports speeds up to 10 Gbps & power delivery up to 100W (15W used for operation).
This port does not support video output.
This port does not support CD/DVD drives or Apple SuperDrive.



Eject any connected devices prior to disconnecting the hub from the host device.