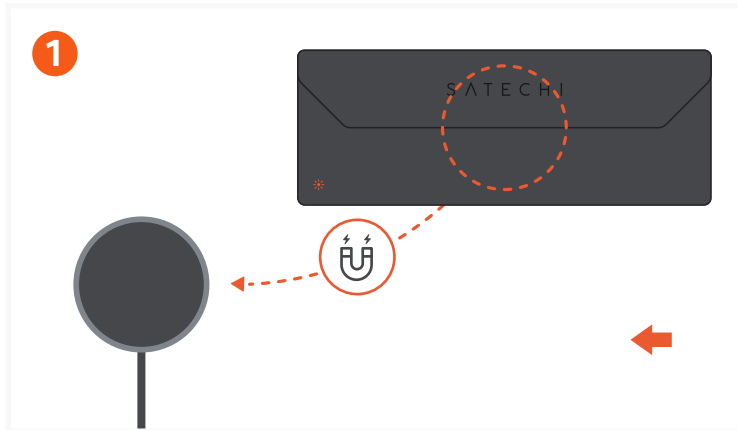


# VEGAN-LEATHER FINDALL™ GLASSES CASE

SKU: ST-LFAGCK / ST-LFAGCW / ST-LFAGCR



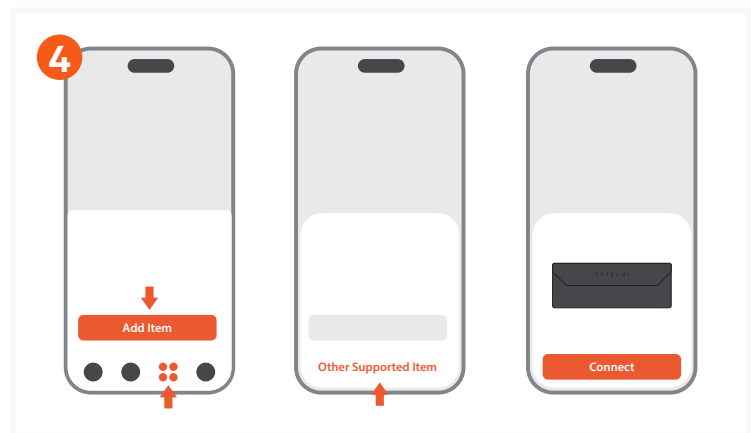
Charge the Glasses Case with a wireless charger (not included). The status light will be orange while charging and green when fully charged. It is recommended to charge once every 6 months. Battery life lasts up to 8 months\* on a single charge (may vary depending on usage).



To power on the Glasses Case, press the power button once. It will beep to indicate it is on. If not paired within 10 minutes, it will beep and automatically power off.



To power off the Glasses Case, quickly press the power button 2 times, then long press the 3<sup>rd</sup> time for at least 5 to 7 seconds. You will hear two beeps, indicating your FindAll Glasses Case is powered off. When device is powered off, you cannot track its location.



To pair the Glasses Case, open the Find My app, tap **Add Item** under **Items**, and tap **Other Supported Item**. Once "Satechi FindAll™ Glasses case" is detected, tap **Connect**.

Do not leave the app while pairing the device.



To remove the Glasses Case, open the Find My app, tap the Glasses Case under **Items**, tap **Remove Item**, tap **Remove**, and confirm to remove.

If unable to pair with a new device, a factory reset must be done.



To factory reset the Glasses Case, quickly press the power button 4 times, then long-press for at least 3 seconds, then you will hear a beep confirming the Glasses Case has been reset.