



WIRELESS CHARGER USER MANUAL

INTRODUCTION

Take your wireless charging experience to the next level! With the Satechi Wireless Charger, you can charge your Qi-enabled fast charge compatible smartphone up to 1.4x faster than standard wireless charging pads. The Wireless Charger is also backwards-compatible with any Qi-enabled smartphone at standard charging speeds.

Please note: for best results, please use the Wireless Charger with a Fast-Charge wall adapter (not included).

SPECIFICATIONS

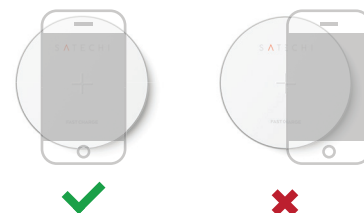
Model	ST-WCP
Dimensions	3.94" x 3.94" x .31"
Weight	130g
Connectivity	Micro USB
Wireless Connectivity	Qi

CONTENTS

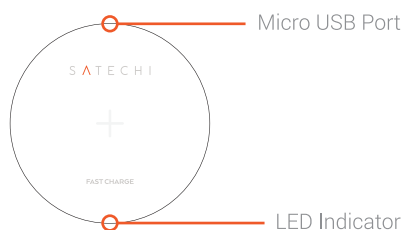
ST-WCP	x1
Micro USB Cable	x1
User Manual	x1

SETUP

1. Plug the Micro USB cable into the Wireless Charger's Micro USB port.
2. Plug the other end of the cable into a USB wall adapter. For best results, please use a Fast-Charge wall adapter.
3. Place your compatible smartphone on the center of the Wireless Charger. The smartphone may not charge properly if not centered on the Charger.



FUNCTIONS



FAQ

Q: When idle, what is the power consumption of the Wireless Charger?

A: Less than 150mW per hour.

Q: Does wireless charging affect other wireless devices?

A: Wireless Charging uses frequencies between 110-205kHz, which will not interfere with your other devices.

FCC ID :

This device complies with part 15 of the FCC results. Operation is subject to the following two conditions:
1. This device may not cause harmful interference and
2. This device must accept any interference received, including interference that may cause undesired operation.

Note: This equipment has been tested and found to comply with the limits for a Class B digital device, pursuant to part 15 of the FCC Rules. These limits are designed to provide reasonable protection against harmful interference when the equipment is operated in a commercial environment. This equipment generates, uses and can radiate radio frequency energy and if not installed and used in accordance with the instructions, may cause harmful interference to radio communications. However, there is no guarantee that interference will not occur in a particular installation. If this equipment does cause harmful interference to radio or television reception, which can be determined by turning the equipment off and on, the user is encouraged to try to correct the interference by one or more of the following measures:

- 1.1. Reorient or relocate the receiving antenna
- 1.2. Increase the separation between the equipment and receiver
- 1.3. Connect the equipment into an outlet on a circuit different from that to which the receiver is connected
- 1.4. Consult the dealer or an experienced radio/TV technician for help

Modifications: Changes or modifications not expressly approved by the manufacturer could void the user's authority to operate the equipment.

Phone: 858-268-1800
 Email: sales@satechi.com
www.satechi.net

CE DECLARATION OF CONFORMITY

Satechi declares that this product is in compliance with the essential requirements and other relevant provisions of applicable EC directives. For Europe, a copy of the Declaration of Conformity for this product may be obtained by visiting www.satechi.net/doc

Limited Warranty

Satechi warrants this product to be free from defects in materials and workmanship for 1 year. If this product is found to be defective within that time, we will repair or replace it. This warranty does not cover accidental damage, wear and tear, or consequential or incidental loss. Under no conditions is Satechi liable for loss of, or damage to devices; nor loss of, or damage to, programs, records, or data; nor any consequential or incidental damages, even if Satechi has been informed of their possibility. This warranty does not affect your statutory rights.

If you have any questions, comments, or concerns about your Satechi product, please contact us first.

© 2016 SATECHI | All Rights Reserved
 7365 Mission Gorge Rd, Suite G, San Diego, CA 92120