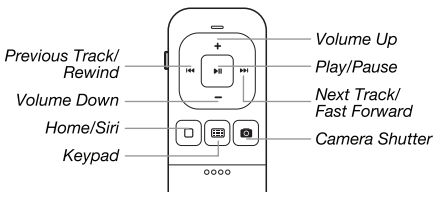


Functions



Keyboard Screen

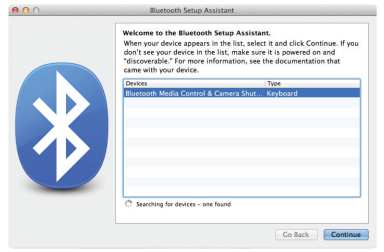
On your Apple device, the BT MediaRemote may be recognized as an independent keyboard causing the normal Apple keyboard screen to not appear. If this is the case, press the Keyboard button on the remote to activate the keyboard screen. Once the remote is powered off, the keyboard screen will automatically appear on your device.

Camera Shutter Remote Click

The volume up button on your iPhone, iPad, or iPod Touch equipped with iOS 5.0 or later functions as the camera shutter when using the camera app: the volume up button on the remote can trigger the same function as well.

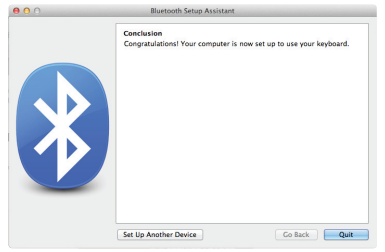
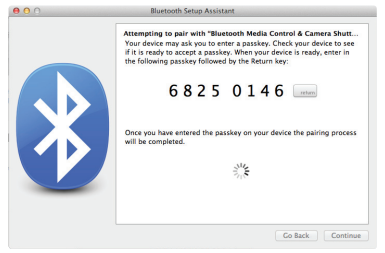
Bluetooth Pairing: Mac

1. Access your Mac's Bluetooth settings by clicking the Bluetooth icon on the desktop or in the system bar. Select "Turn Bluetooth On" to activate the Bluetooth function.
2. Scroll down the list and select "Set up Bluetooth Device..."
3. The Bluetooth Setup Assistant will begin - follow the on-screen instructions.
4. Press the Connect button on the remote to put it into pairing mode. Select "Bluetooth Media Control & Camera Shutter Click" from the list and click continue to proceed with setup.



Bluetooth Pairing: Mac

5. Your Mac will generate a passkey - enter these numbers on the remote and press the Enter button.
6. Your BT MediaRemote is ready to be used.



FCC ID :

This device complies with part 15 of the FCC results. Operation is subject to the following two conditions:
 1. This device may not cause harmful interference and
 2. This device must accept any interference received, including interference that may cause undesired operation.

Note: This equipment has been tested and found to comply with the limits for a Class B digital device, pursuant to part 15 of the FCC Rules. These limits are designed to provide reasonable protection against harmful interference when the equipment is operated in a commercial environment. This equipment generates, uses and can radiate radio frequency energy and if not installed and used in accordance with the instructions, may cause harmful interference to radio communications. However, there is no guarantee that interference will not occur in a particular installation. If this equipment does cause harmful interference to radio or television reception, which can be determined by turning the equipment off and on, the user is encouraged to try to correct the interference by one or more of the following measures:

- 1.1. Reorient or relocate the receiving antenna
- 1.2. Increase the separation between the equipment and receiver
- 1.3. Connect the equipment into an outlet on a circuit different from that to which the received is connected
- 1.4. Consult the dealer or an experience radio/TV technician for help

Changes or modifications not expressly approved by the manufacturer could void the user's authority operate the equipment.

LIMITED WARRANTY:
 Satechi warrants this product to be free from defects in materials and workmanship for 1 year. If this product is found to be defective within that time, we will repair or replace it. This warranty does not cover accidental damage, wear and tear, or consequential or incidental loss. Under no conditions is Satechi liable for loss of, or damage to devices; nor loss of, or damage to, programs, records, or data; nor any consequential or incidental damages, even if Satechi has been informed of their possibility. This warranty does not affect your statutory rights. If you have any questions, comments, or concerns about your Satechi product, please contact us first.

Phone: 858-268-1800
 Email: sales@satechi.com
 www.satechi.net



BT MediaRemote
 Multimedia + Camera Shutter + Siri

User Manual

ST-BTRM1

Introduction

BT Media Remote allows you to control various functions of your device with the latest Bluetooth® technology.

Multimedia Control

Control the playback of your music and video.
 Compatibility: iPhone 4S/4/3GS, iPad 2/1, iPod Touch 4G/3G/2G, MacBook Pro/Air, Mac Mini, and all other Bluetooth enabled Apple products.

Remote Camera Shutter

Take photos without leaving yourself out and eliminate any camera instability.
 Compatibility: iPhone 4S/4/3GS, iPad 2, iPod Touch 4G, MacBook Pro/Air.
 Note: Functions only in the Camera App

Siri Activation

The remote's Home button can be used to activate Siri.
 Compatibility: iPhone 4S

Specifications

Model	BLUECOON, BC-01
Frequency Range	ISM Band 2.4GHz
Bluetooth Version	3.0 HID, Class 2
Power Supply	Coin Cell (CR2025 x 2)
Connecting Time	60 sec
Sleep	10 min
LED	Green: Boot & Pairing / Red: Battery Check & Low Battery
Range	~30ft
Battery Life	~6 months (based on 1 hour of usage/day)

Contents

- Satechi BT MediaRemote
- 2x CR2025 Batteries
- User Manual

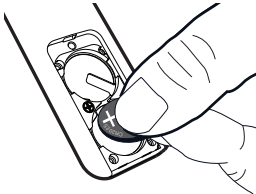
System Requirements

- Hardware**
- iPhone
 - iPad
 - iPod Touch

- Operating System**
- MacOSX v10.4 or later
 - iOS

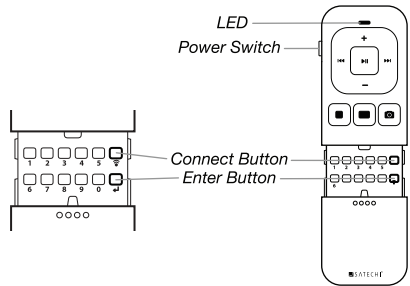
Battery

Insert the 2 CR2025 batteries into the battery compartment of the remote before usage. Ensure that the positive and negative terminals of the batteries and compartment are matched.



Bluetooth Pairing

Bluetooth pairing is required before the first usage with the remote.



1. Turn the power switch to the ON position.
2. Press the Connect button - The LED light will blink green indicating it is in pairing mode.

Bluetooth Pairing

3. In your Apple device, go to Settings > General > Bluetooth and ensure that Bluetooth is on.

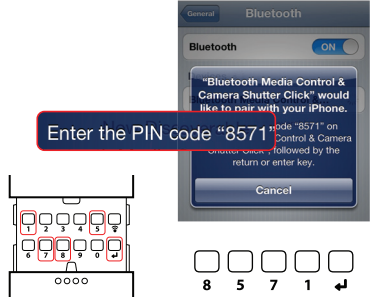


4. Select "Bluetooth Media Control & Camera Shutter Click" from the Devices list.



Bluetooth Pairing

5. Your Apple device will display a message with a PIN code - enter this code on the remote's keypad and press Enter.



6. If pairing is successful, your Apple device will display "Connected" on the Bluetooth devices list.

