



Aluminum Mini Docking Station

User Manual

Installing Drivers

CAUTION: DO NOT connect the docking station to a computer before installing the provided driver.

Insert the provided CD into a computer's disc drive and the **AutoPlay** will be launched automatically. If the **AutoPlay** does not appear, locate and double-click on the **Setup.exe** file in the driver folder.

Windows® 7/ Windows® 8/ Windows® 8.1 / Windows® 10

- A. Click **Run Setup.exe** to execute the installer program.
- B. Enter the administrator password and then click **Yes** to start the installation.
- C. The **License agreement** will be prompted. Click **I Accept** to start the driver installation.
- D. Click **Yes** to restart or **No** to manually restart later, if you are prompted to restart the computer.

Connecting

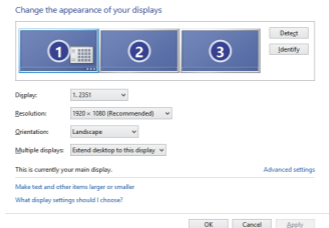
- A. Connect the Docking Station to an HDMI and/or DVI monitor and a computer. The screen may temporarily go black or flash during this process.
- B. Connect the USB peripherals, Ethernet, speaker and microphone to the corresponding connectors.

NOTE: When using the HDMI and the DVI connector simultaneously, the HDMI connector will not be able to reach 4K resolution.

Multi-Monitor Configuration

The HDMI and/or DVI monitors can be connected through the Docking Station if monitors are already connected to the PC. Once extra monitors are connected, it can be configured to use either “**Mirror mode**”, “**Extended mode**” or be the **Primary** display.

Position the mouse anywhere on the Windows Desktop, right-click and select **Screen Resolution**



Alternatively, click utility icon  in the **Windows System Tray**, and then select **DisplayLink Manager** or **Video Setup**.



V1.0

Aluminum Mini Docking Station

User Manual