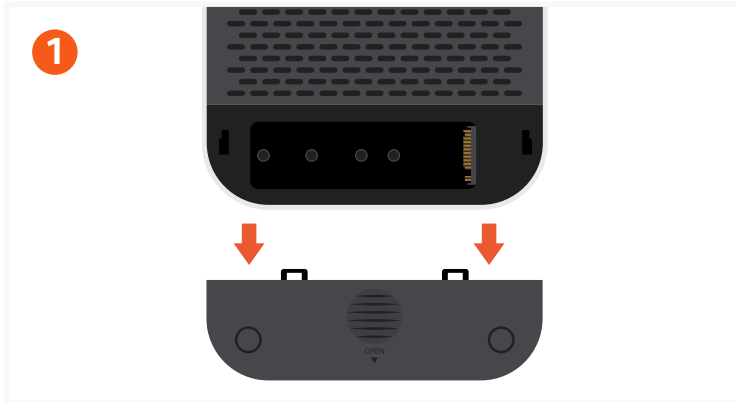


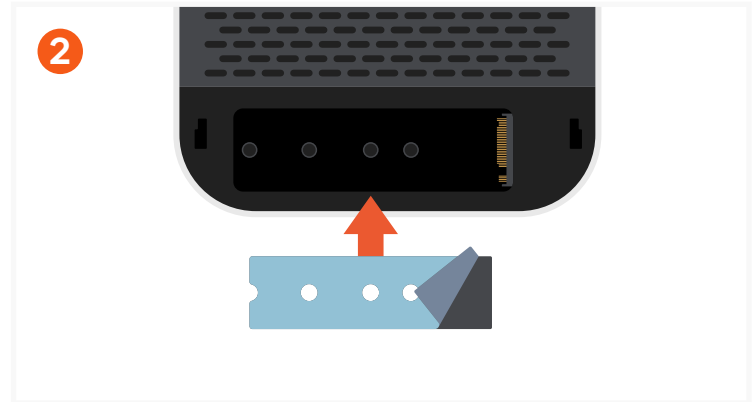
MAC MINI M4 STAND & HUB WITH NVME ENCLOSURE

SKU: ST-GNMMES

INSTALLING NVMe SSD

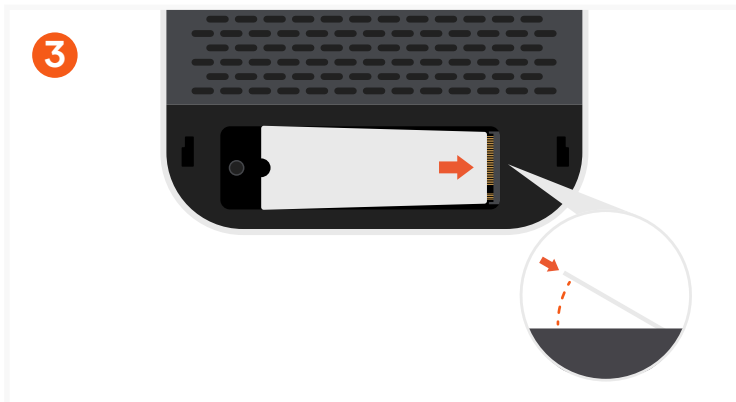


Remove the SSD enclosure cover on the bottom of the stand.



Before installing NVMe SSD, first apply the included thermal tape.

The side with the blue film should be in contact with the SSD. The clear film adheres to the enclosure.



Insert the SSD at a slight angle (35-45°) and ensure it is fully seated in the PCIe slot.

Important: This stand is not compatible with SSDs that have pre-installed heat sinks or are double-sided.

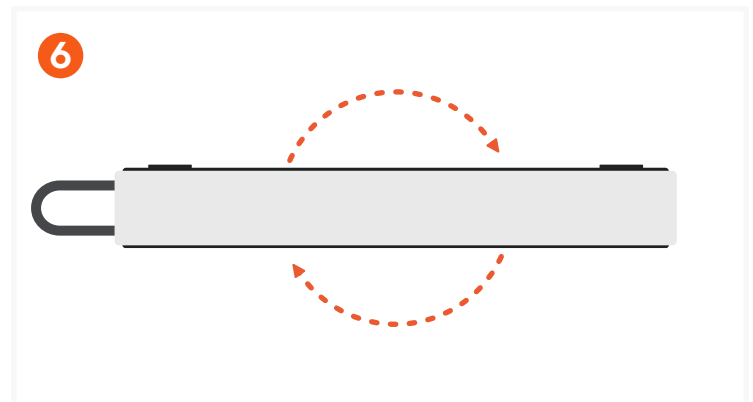


Secure the SSD using the included screwdriver and screw.

Tip: To prevent stripping the screw, do not overtighten.

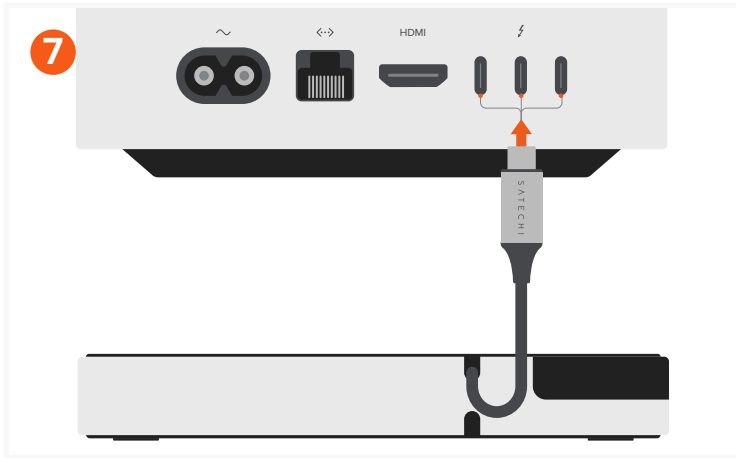


Carefully reattach the enclosure cover: insert the side clips first, then slide the door into place.

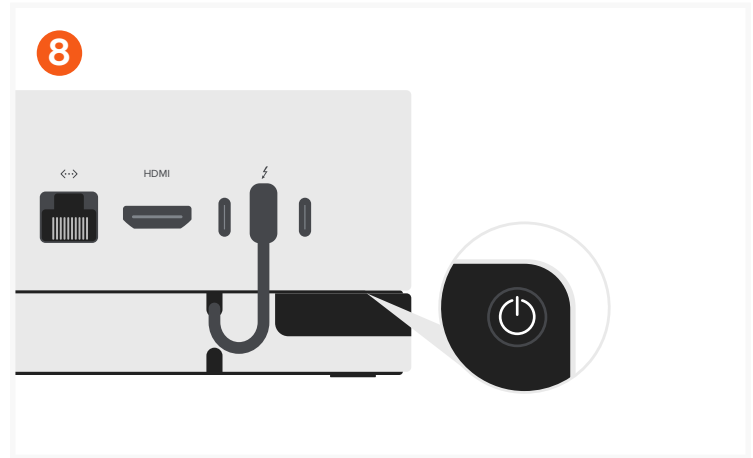


Flip the stand back over.

The Mac Mini and/or the M.2 NVMe SSD are not included.
SSDs equipped with heatsinks and double-sided SSDs are not compatible.

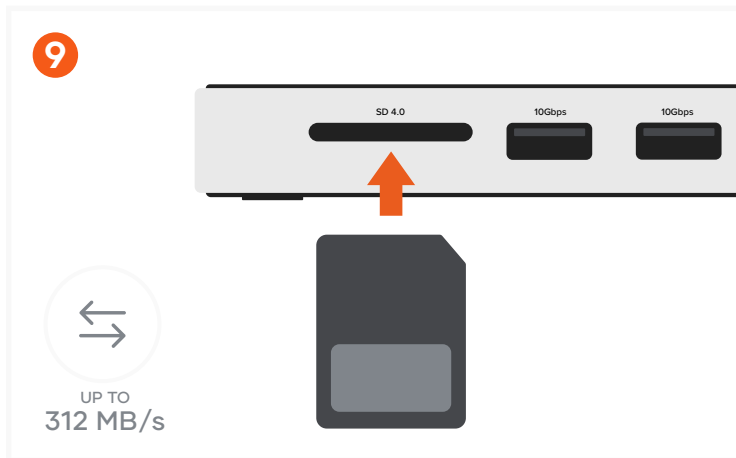


Place the stand on a flat surface and use the USB-C cable to connect to your M4 Mac Mini.
Supports Mac Mini (M4, 2024). Does not support M2, M1, or 2018 Mac Mini or Mac Studio models.



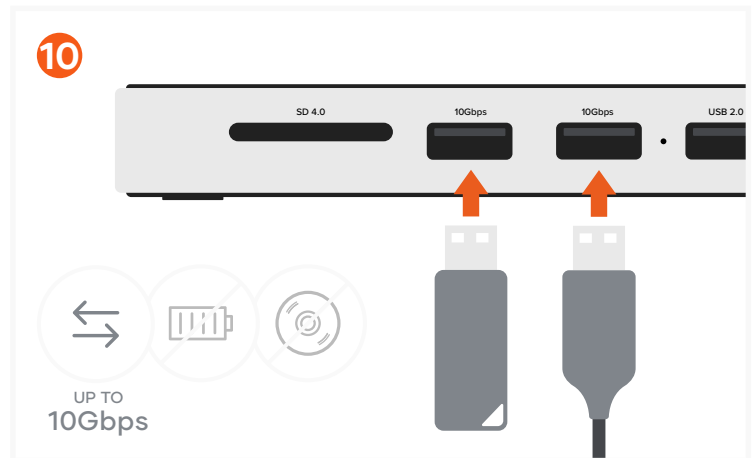
Easily access the power button through the cutout.

PORTS AND CONNECTORS



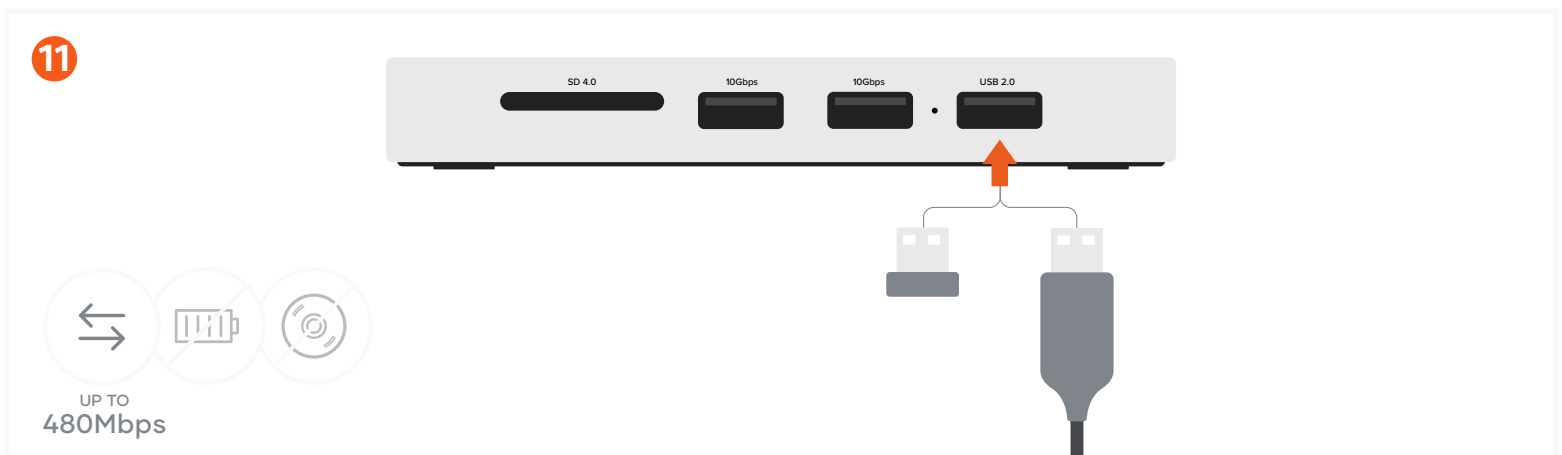
SD 4.0 Card Reader (up to 312 MB/s)

High-speed data transfer for SD cards.
Insert the card with the label facing up and the pins facing down.



Two USB-A 10Gbps (up to 1250 MB/s)

Two high-speed data transfer ports for external drives.
These ports do not support charging or CD drives, including the Apple SuperDrive.



USB 2.0 Port (up to 60 MB/s)

Ideal for low-power devices and peripherals (e.g., USB dongles, wired keyboards).
This port does not support charging or CD drives, including the Apple SuperDrive.