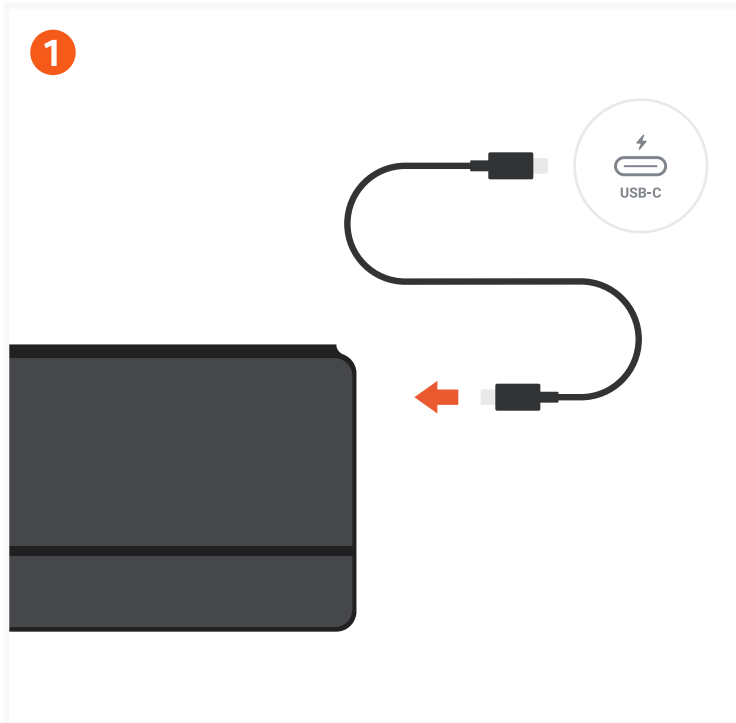
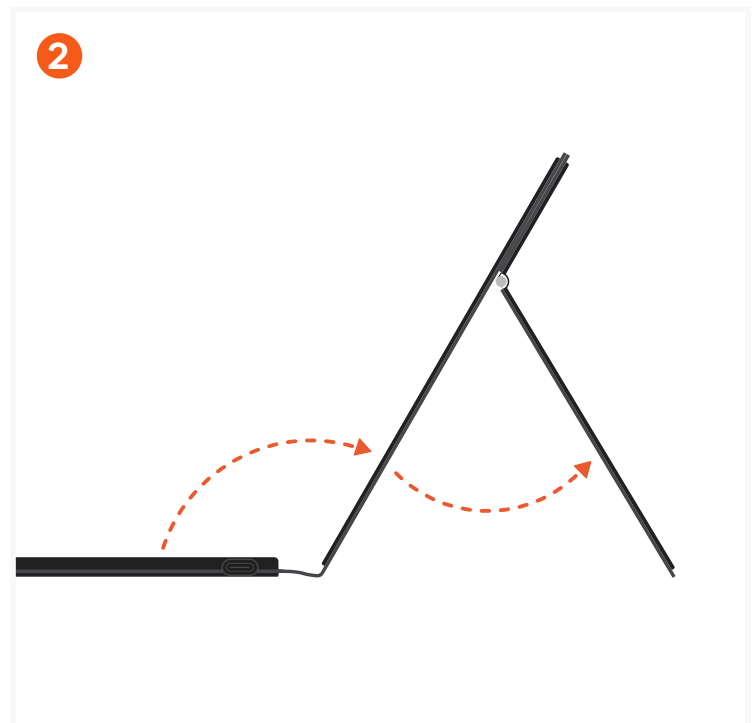


ONTHEGO™ BLUETOOTH KEYBOARD

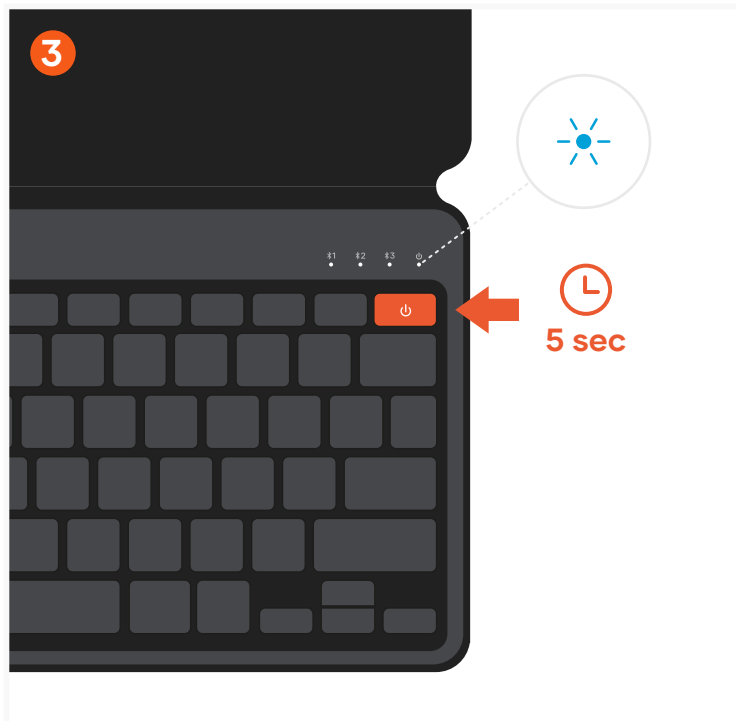
SKU: ST-KOTGK / ST-KOTGW



Before use, please fully charge the OntheGo™ Keyboard via USB-C port using its included cable.



Open the cover and use the adjustable kickstand to position your desired orientation.



Turn on the keyboard by pressing the power button for 5 seconds on the top right of the keyboard.

The LED above the power button will blink blue.

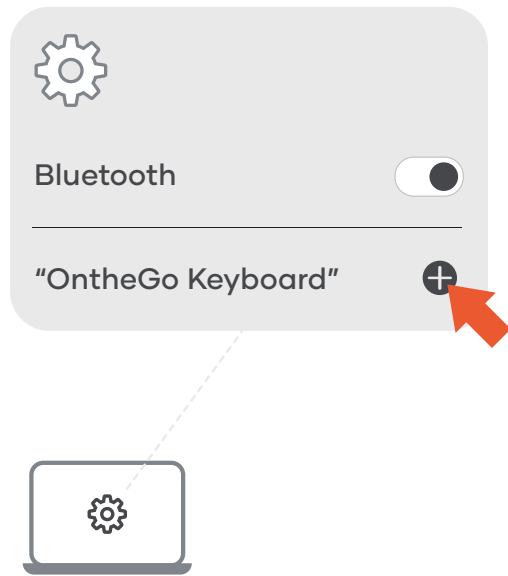


Put the keyboard into pairing mode. Press and hold the FN key and one of the Bluetooth keys for 3-5 seconds.

The LED will flash blue.

You will be able to pair up to three devices.

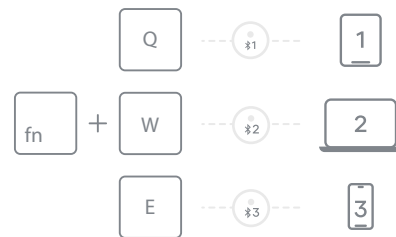
5



Turn on Bluetooth on your device and select "OntheGo Keyboard" from the list.

Click "Connect" to finish the connection process.

6



Press FN key and one of the Bluetooth keys (Q, W, E) to switch between Bluetooth channels (1, 2, or 3).

7



30 min



After 30 minutes of inactivity, the keyboard will go into sleep mode to preserve battery.

Press any key to wake and the keyboard will automatically connect.

8



Turn off the keyboard by pressing the power button for 5 seconds on the top right of the keyboard.

The LED above the power button will blink red.