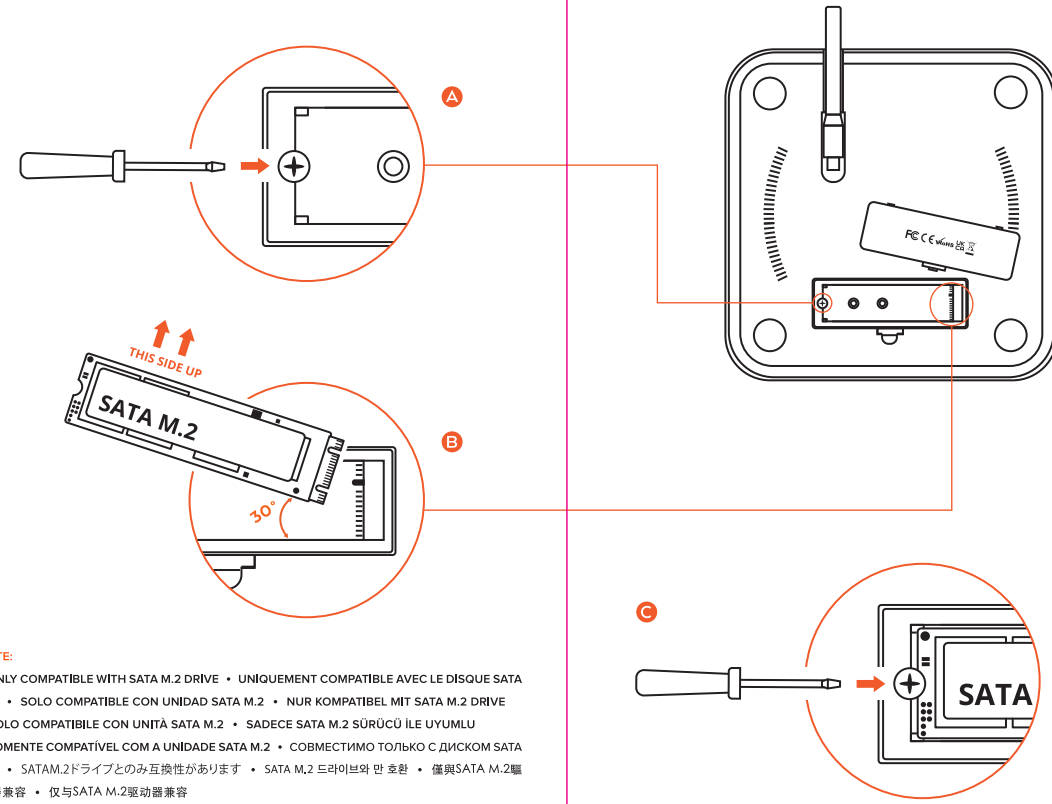


# OUTSIDE

## SSD INSTALLATION

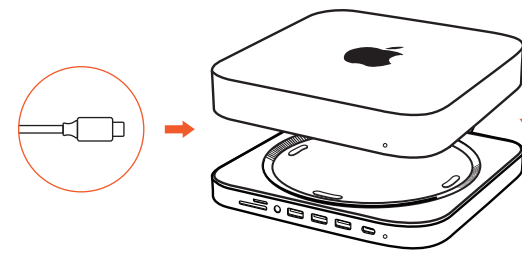
SSD INSTALLATION | INSTALACIÓN SSD | SSD-INSTALLATION | INSTALLAZIONE SSD | SSD KURULUMU |  
INSTALAÇÃO SSD | УСТАНОВКА SSD | SSD의インストール | SSD 설치 | SSD安装 | SSD安装



**NOTE:**  
 • ONLY COMPATIBLE WITH SATA M.2 DRIVE • UNIQUEMENT COMPATIBLE AVEC LE DISQUE SATA M.2 • SOLO COMPATIBILE CON UNITÀ SATA M.2 • NUR KOMPATIBEL MIT SATA M.2 DRIVE  
 • SOLO COMPATIBILE CON UNITÀ SATA M.2 • SADECE SATA M.2 SÜRÜCÜ İLE UYUMLU  
 • SOMENTE COMPATIBILE COM A UNIDADE SATA M.2 • СОВМЕСТИМО ТОЛЬКО С ДИСКОВОМ SATA M.2 • SATAM.2ドライブとのみ互換性があります • SATA M.2 드라이브와 만 호환 • 僅與SATA M.2驅  
 動器兼容 • 仅与SATA M.2驱动器兼容

## PLUG & PLAY

PLUG & PLAY | PLUG & PLAY | PLUG & PLAY | PLUG & PLAY | TAK  
ÇALIŞTIR | PLUG & PLAY | PLUG & PLAY | プラグ&プレイ | 플러그 앤  
플레이 | 即插即用 | 即插即用



### 1. Connect to your Mac Mini

Connectez à votre Mac Mini | Conecta a tu Mac Mini  
An Ihren Mac Mini anschließen | Collega al tuo Mac Mini  
Mac Mini'ize bağlanın | Conecte-se ao seu Mac Mini  
Подключите к вашему Mac Mini | Mac Mini に接続します  
Mac Mini에 연결 | 连接到您的Mac Mini | 连接到您的Mac Mini

### 2. Connect your devices

Connectez vos appareils | Conecte tus dispositivos  
Schließen Sie Ihre Geräte an | Collega i tuoi dispositivi  
Cihazlarınızı bağlayın | Conecte seus dispositivos  
Подключите ваши устройства | デバイスを接続する  
장치 연결 | 连接您的设备 | 连接您的设备

## FCC

This device complies with part 15 of the FCC rules. Operation is subject to the following two conditions:  
 1. This device may not cause harmful interference and  
 2. This device must accept any interference received, including interference that may cause undesired operation.

**Note:** This Equipment has been tested and found to comply with the limits for a class B digital device, pursuant to Part 15 of the Federal Communications Commission (FCC) rules. These limits are designed to provide reasonable protection against harmful interference in a residential installation. This equipment generates, uses, and can radiate radio frequency energy and, if not installed and used in accordance with the instructions, may cause harmful interference to radio communications. However, there is no guarantee that interference will not occur in a particular installation. If this equipment does cause harmful interference to radio or television reception, which can be determined by turning the equipment off and on, the user is encouraged to try to correct the interference by one or more of the following measures:  
 1.1. Reorient or relocate the receiving antenna  
 1.2. Increase the separation between the equipment and receiver  
 1.3. Connect the equipment into an outlet on a circuit different from that to which the receiver is connected  
 1.4. Consult the dealer or an experienced radio/TV technician for help  
 Changes or modifications not expressly approved by the manufacturer could void the user's authority operate the equipment.

## CE DECLARATION OF CONFORMITY

Satechi declares that this product is in compliance with the essential requirements and other relevant provisions of applicable EC directives. For Europe, a copy of the Declaration of Conformity for this product may be obtained by visiting [www.satechi.net/doc](http://www.satechi.net/doc)

## WEEE Information

According to the WEEE (Waste Electrical and Electronic Equipment) Directive, do not dispose of this product as household waste or commercial waste. Waste electrical and electronic equipment should be appropriately collected and recycled as required by practices established for your country. For information on recycling of this product, please contact your local authorities, your household waste disposal service, or the shop where you purchased the product.

support@satechi.com  
 +1 858 268 1800  
 www.satechi.com

# SATECHI

## STAND HUB FOR MAC MINI W/ SSD ENCLOSURE User Manual

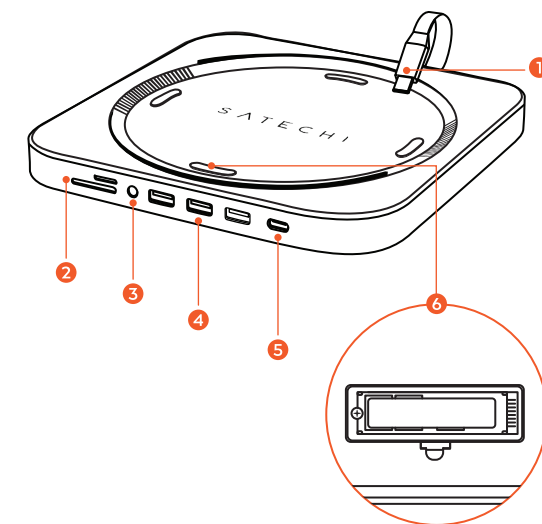


Manuel d'utilisateur | Manual de usuario |  
 Bedienungsanleitung | Manuale dell'utente |  
 Kullanım kılavuzu | Manual do usuário |  
 Руководство пользователя | ユーザーマニュアル |  
 사용 설명서 | 用戶手冊 | 用戶手冊

# INSIDE

## FUNCTIONS

FONCTIONS | FUNCIONES | FUNKTIONEN | FUNZIONI |  
FONKSİYONLAR | FUNÇÕES | ФУНКЦИИ | 機能 | 기능 | 功能 | 功能



### 1. Built-in USB-C Connector

Connecteur USB-C intégré | Conector USB-C integrado | Integrierter USB-C  
Anschluss | Conector USB-C integrado | USB-C Bağlayıcısı Oluşturun |  
Conector USB-C integrado | Встроенный кабель USB-C | ビルドイン USB-C  
コネクタ | USB-C 커넥터 구축 | 内置USB-C连接器 | 内置USB-C连接器

### 2. SD & Micro SD Card Slots

Fentes cartes SD et Micro SD | Ranuras de Tarjetas SD & Micro SD |  
SD und Micro SD Kartensteckplätze | Slot per schede SD e Micro SD | SD  
ve Micro SD Kart Yuvaları | Slots para cartões SD e Micro SD | Слоты для  
SD и Micro SD карт | SD & Micro SD 카드스ล็อต | SD 및 Micro SD 카드  
슬롯 SD和Micro SD卡插槽 | SD和Micro SD卡插槽

### 3. Audio Jack Port

Port de Prise pour Casque | Puerto Jack de Audio | 3,5mm Audiobuchse |  
Porta jack audio | Ses Jaki Bağlantı Noktası | Porta de entrada de áudio |  
Аудио разъем | 오디오 잭 포트 | 音频插孔 | 音频  
插孔

### 4. 3X USB Type-A Ports

Ports USB Type-A | Puertos USB Tipo-A | USB Typ-A Anschlüsse |  
Porte USB Tipo-A | USB Tip-A Bağlantı Noktaları | Portas USB Tipo A |  
Порты USB Type-A | USB Type-A 포트 | USB Type-A 포트 | USB Type-A端  
口 | USB Type-A端口

### 5. USB Type-C Port

Port USB Type-C | Puerto USB Tipo-C | USB Typ-C Anschluss | Porta USB  
Tipo-C | USB TYPE-C Bağlantı Noktası | Porta USB TYPE-C | Порт USB  
Type-C | USB Type-C 포트 | USB Type-C 포트 | USB Type-C端口 | USB  
Type-C端口

### 5. M.2 SATA SSD Card Enclosure

Boîtier Pour Carte SSD | Caja de la tarjeta SSD | SSD-Kartengehäuse |  
Alloggiamento per scheda SSD | SSD Kart Muhafazası | Caixa de cartão  
SSD | Корпус для SSD накопителя | SSD 카드엔클로저 | SSD 카드  
인클로저 | SSD 卡外殼 | SSD 卡外殼

## IMPORTANT

IMPORTANT | IMPORTANTE | WICHTIG | IMPORTANTE | Önemli |  
Importante | ВАЖНО | 重要 | 중대한 | 重要事項 | 注意

• The USB ports are not designed for charging, only for device  
syncing, data transfer and USB peripherals.

• Les ports USB ne sont pas conçus pour le chargement, mais uniquement  
pour la synchronisation des appareils, le transfert de données et les  
périphériques USB.

• Los puertos USB no están diseñados para recargar, solo para sincronización  
de dispositivos, transferencia de datos y periféricos USB.

• Die USB-Ports können nicht zum Aufladen verwendet werden, sondern nur  
zum Synchronisieren von Geräten, Transfer von Daten und zum Anschluss  
von USB-Peripheriegeräten.

• Le porte USB non sono progettate per la ricarica, solo per la  
sincronizzazione dei dispositivi, il trasferimento dei dati e le periferiche USB.

• USB bağlantı noktaları şarj için tasarlanmamıştır, yalnızca cihaz  
senkronizasyonu, veri aktarımı ve USB çevre birimleri için tasarlanmıştır.

• As portas USB não são projetadas para carregamento, apenas para  
sincronização de dispositivos, transferência de dados e periféricos USB.

• Порты USB не предназначены для зарядки, они предназначены только  
для синхронизации устройств, передачи данных и подключения  
периферийных USB-устройств.

• USB 포트는 충전 용이 아니라 장치 동기화, 데이터 전송 및 USB 주변 장치 전용입니다.

• USB 포트는 충전 용이 아니라 장치 동기화, 데이터 전송 및 USB 주변 장치 전용입니다.

• USB端口不是为充电而设计的，仅用于设备同步，数据传输和USB外设。

• We recommend customers use genuine cables when they are  
trying to sync.

• Nous recommandons aux clients d'utiliser des câbles authentiques  
lorsqu'ils essaient de synchroniser.

• Recomendamos a los clientes que usen cables originales cuando intenten  
sincronizar.

• Wir empfehlen den Kunden, für das Synchronisieren von Geräten  
Originalkabel zu verwenden.

• Raccomandiamo ai clienti di usare cavi originali quando provano a  
sincronizzare.

• Müşterilerin senkronizasyon yapmaya çalışırken orijinal kablolar  
kullanmalarını öneririz.

• Recomendamos que os clientes usem cabos originais quando estiverem  
tentando sincronizar.

• Мы рекомендуем клиентам использовать оригинальные кабели при  
попытке синхронизации.

• 同期をする時には、純正ケーブルを使用することを勧めます。

• 동기화를 시도 할 때 정품 케이블을 사용하는 것이 좋습니다.

• 我們建議客戶在嘗試同步時使用原裝電纜。

• 我們建議客戶在嘗試同步時使用原裝電纜。

• iPad Pro will only sync via USB-A due to its power wattage  
requirement for syncing.

• L'iPad Pro ne synchronisera que via USB-A en raison de la puissance  
requisse pour la synchronisation.

• El iPad Pro solo se sincronizará a través de USB-A debido a su potencia  
requerida para la sincronización.

• Der iPad Pro kann wegen seiner Anforderung an die elektrische Leistung  
nur über einen USB-A Anschluss synchronisiert werden.

• L'iPad Pro si sincronizzerà solo tramite USB-A a causa della potenza  
richiesta per la sincronizzazione.

• iPad Pro, senkronizasyon için güç watt gereksinimi nedeniyle yalnızca  
USB-A ile senkronize edilir.

• O iPad Pro sincronizará apenas via USB-A devido ao seu requisito de  
potência em watts para sincronização.

• iPad Pro будет синхронизироваться только через USB-A из-за  
требований к мощности для синхронизации.

• iPad Pro は、同期に必要な電力ワット数に条件があるため、USB-A 経由でのみ同期  
します。

• iPad Pro는 동기화를 위한 전력 와트 요구 사항으로 인해 USB-A를 통해서만 동기화됩니다.

• 由於iPad Pro的功率要求，iPad Pro僅通過USB-A進行同步。

• 由於iPad Pro的功率要求，iPad Pro僅通過USB-A進行同步。