

Test Report

Report No. : MTi250815018-0112C1

Date of Issue : October 16, 2025

Applicant : Sariana LLC

Product : OntheGo 7-in-1 Multiport Adapter

Test Type : Commissioned Inspection

Shenzhen Microtest Co., Ltd.



TEST REPORT

Report No.: MTi250815018-0112C1

Basic Information			
Applicant	Sariana LLC		
Applicant Address	7365 Mission Gorge Rd, Suite G, San Diego, CA 92120, USA		
Manufacturer	Sariana LLC		
Manufacturer Address	7365 Mission Gorge Rd, Suite G, San Diego, CA 92120, USA		
Sample Information			
Product	OntheGo 7-in-1 Multiport Adapter	Main test Model	MN25STI03
Serial Model	/	Brand/ Trademark	S A T E C H I
Sample Number	1	Model difference	/
Testing Information			
Sample Receive Date	October 11, 2025	Sample Source	Customer provided
Test Specification	With reference to The Restriction of the Use of Certain Hazardous Substances in Electrical and Electronic Equipment Regulations 2012 .		
Date of Tests	October 11, 2025-October 16, 2025		
Test Address	Chemistry laboratory		
Test Results	Please refer to next page(s).		
Test Conclusion	The submitted sample(s) complied with the Lead, Cadmium, Mercury, Hexavalent Chromium, PBBs, PBDEs, DBP, BBP, DEHP, DIBP content requirement according to The Restriction of the Use of Certain Hazardous Substances in Electrical and Electronic Equipment Regulations 2012.		
Prepared by:	Rita Li	 	
Reviewed by:	Sunshing Chen	 	
Approved by:	Tina Huang	 	

TEST REPORT

Report No.: MTI250815018-0112C1

Test Method:

1. **BS EN 62321-3-1:2014, screening by XRF spectroscopy.**
2. **Wet chemical test method.**
 - a. **BS EN 62321-5:2014, determination of Cadmium by ICP-OES.**
 - b. **BS EN 62321-5:2014, determination of Lead by ICP-OES.**
 - c. **BS EN 62321-4:2014+A1:2017 , determination of Mercury by ICP-OES.**
 - d. **BS EN 62321-7-1:2015 & BS EN 62321-7-2:2017, determination of Hexavalent chromium by Colorimetric method using UV-Vis.**
 - e. **BS EN 62321-6:2015, determination of PBBs and PBDEs by GC-MS.**
 - f. **BS EN 62321-8: 2017, determination of phthalates by GC-MS.**

TEST REPORT

Report No.: MTI250815018-0112C1

Test Results:

Part No.	Sample Description	Test item	XRF Result	Chemical Test (mg/kg)	Conclusion
1	Black plastic	Pb	BL	--	Pass
		Cd	BL	--	
		Hg	BL	--	
		Cr(Cr(VI))	BL	--	
		Br(PBBs&PBDEs)	BL	--	
		Phthalate(DBP/BBP /DEHP/DIBP)	--	N.D.	
2	Silver magnet	Pb	BL	--	Pass
		Cd	BL	--	
		Hg	BL	--	
		Cr(Cr(VI))	BL	--	
		Br(PBBs&PBDEs)	/	/	
		Phthalate(DBP/BBP /DEHP/DIBP)	/	/	
3	Grey plastic	Pb	BL	--	Pass
		Cd	BL	--	
		Hg	BL	--	
		Cr(Cr(VI))	BL	--	
		Br(PBBs&PBDEs)	BL	--	
		Phthalate(DBP/BBP /DEHP/DIBP)	--	N.D.	
4	Grey plastic	Pb	BL	--	Pass
		Cd	BL	--	
		Hg	BL	--	
		Cr(Cr(VI))	BL	--	
		Br(PBBs&PBDEs)	BL	--	
		Phthalate(DBP/BBP /DEHP/DIBP)	--	N.D.	

TEST REPORT

Report No.: MTI250815018-0112C1

Part No.	Sample Description	Test item	XRF Result	Chemical Test (mg/kg)	Conclusion
5	White plastic	Pb	BL	--	Pass
		Cd	BL	--	
		Hg	BL	--	
		Cr(Cr(VI))	BL	--	
		Br(PBBs&PBDEs)	BL	--	
		Phthalate(DBP/BBP /DEHP/DIBP)	--	N.D.	
6	Black-coated silver metal	Pb	BL	--	Pass
		Cd	BL	--	
		Hg	BL	--	
		Cr(Cr(VI))	BL	--	
		Br(PBBs&PBDEs)	/	/	
		Phthalate(DBP/BBP /DEHP/DIBP)	/	/	
7	Silver metal	Pb	BL	--	Pass
		Cd	BL	--	
		Hg	BL	--	
		Cr(Cr(VI))	BL	--	
		Br(PBBs&PBDEs)	/	/	
		Phthalate(DBP/BBP /DEHP/DIBP)	/	/	
8	Silver metal screw	Pb	BL	--	Pass
		Cd	BL	--	
		Hg	BL	--	
		Cr(Cr(VI))	BL	--	
		Br(PBBs&PBDEs)	/	/	
		Phthalate(DBP/BBP /DEHP/DIBP)	/	/	
9	Silver metal screw	Pb	BL	--	Pass
		Cd	BL	--	
		Hg	BL	--	
		Cr(Cr(VI))	BL	--	
		Br(PBBs&PBDEs)	/	/	
		Phthalate(DBP/BBP /DEHP/DIBP)	/	/	

TEST REPORT

Report No.: MTI250815018-0112C1

Part No.	Sample Description	Test item	XRF Result	Chemical Test (mg/kg)	Conclusion
10	Black plastic	Pb	BL	--	Pass
		Cd	BL	--	
		Hg	BL	--	
		Cr(Cr(VI))	BL	--	
		Br(PBBs&PBDEs)	BL	--	
		Phthalate(DBP/BBP /DEHP/DIBP)	--	N.D.	
11	Black plastic	Pb	BL	--	Pass
		Cd	BL	--	
		Hg	BL	--	
		Cr(Cr(VI))	BL	--	
		Br(PBBs&PBDEs)	BL	--	
		Phthalate(DBP/BBP /DEHP/DIBP)	--	N.D.	
12	Black plastic	Pb	BL	--	Pass
		Cd	BL	--	
		Hg	BL	--	
		Cr(Cr(VI))	BL	--	
		Br(PBBs&PBDEs)	BL	--	
		Phthalate(DBP/BBP /DEHP/DIBP)	--	N.D.	
13	Silver metal	Pb	BL	--	Pass
		Cd	BL	--	
		Hg	BL	--	
		Cr(Cr(VI))	BL	--	
		Br(PBBs&PBDEs)	/	/	
		Phthalate(DBP/BBP /DEHP/DIBP)	/	/	
14	PCB	Pb	BL	--	Pass
		Cd	BL	--	
		Hg	BL	--	
		Cr(Cr(VI))	BL	--	
		Br(PBBs&PBDEs)	BL	--	
		Phthalate(DBP/BBP /DEHP/DIBP)	--	N.D.	

TEST REPORT

Report No.: MTI250815018-0112C1

Part No.	Sample Description	Test item	XRF Result	Chemical Test (mg/kg)	Conclusion
15	Solder	Pb	BL	--	Pass
		Cd	BL	--	
		Hg	BL	--	
		Cr(Cr(VI))	BL	--	
		Br(PBBs&PBDEs)	/	/	
		Phthalate(DBP/BBP /DEHP/DIBP)	/	/	
16	White glue	Pb	BL	--	Pass
		Cd	BL	--	
		Hg	BL	--	
		Cr(Cr(VI))	BL	--	
		Br(PBBs&PBDEs)	BL	--	
		Phthalate(DBP/BBP /DEHP/DIBP)	--	N.D.	
17	Black wire sheath	Pb	BL	--	Pass
		Cd	BL	--	
		Hg	BL	--	
		Cr(Cr(VI))	BL	--	
		Br(PBBs&PBDEs)	BL	--	
		Phthalate(DBP/BBP /DEHP/DIBP)	--	N.D.	
18	Black plastic	Pb	BL	--	Pass
		Cd	BL	--	
		Hg	BL	--	
		Cr(Cr(VI))	BL	--	
		Br(PBBs&PBDEs)	BL	--	
		Phthalate(DBP/BBP /DEHP/DIBP)	--	N.D.	
19	Silver metal	Pb	BL	--	Pass
		Cd	BL	--	
		Hg	BL	--	
		Cr(Cr(VI))	X	N.D.	
		Br(PBBs&PBDEs)	/	/	
		Phthalate(DBP/BBP /DEHP/DIBP)	/	/	

TEST REPORT

Report No.: MTI250815018-0112C1

Part No.	Sample Description	Test item	XRF Result	Chemical Test (mg/kg)	Conclusion
20	Silver metal	Pb	BL	--	Pass
		Cd	BL	--	
		Hg	BL	--	
		Cr(Cr(VI))	X	N.D.	
		Br(PBBs&PBDEs)	/	/	
		Phthalate(DBP/BBP /DEHP/DIBP)	/	/	
21	Solder	Pb	BL	--	Pass
		Cd	BL	--	
		Hg	BL	--	
		Cr(Cr(VI))	BL	--	
		Br(PBBs&PBDEs)	/	/	
		Phthalate(DBP/BBP /DEHP/DIBP)	/	/	
22	PCB	Pb	BL	--	Pass
		Cd	BL	--	
		Hg	BL	--	
		Cr(Cr(VI))	BL	--	
		Br(PBBs&PBDEs)	BL	--	
		Phthalate(DBP/BBP /DEHP/DIBP)	--	N.D.	
23	Silver metal	Pb	BL	--	Pass
		Cd	BL	--	
		Hg	BL	--	
		Cr(Cr(VI))	BL	--	
		Br(PBBs&PBDEs)	/	/	
		Phthalate(DBP/BBP /DEHP/DIBP)	/	/	
24	Black plastic	Pb	BL	--	Pass
		Cd	BL	--	
		Hg	BL	--	
		Cr(Cr(VI))	BL	--	
		Br(PBBs&PBDEs)	BL	--	
		Phthalate(DBP/BBP /DEHP/DIBP)	--	N.D.	

TEST REPORT

Report No.: MTI250815018-0112C1

Part No.	Sample Description	Test item	XRF Result	Chemical Test (mg/kg)	Conclusion
25	Black wire sheath	Pb	BL	--	Pass
		Cd	BL	--	
		Hg	BL	--	
		Cr(Cr(VI))	BL	--	
		Br(PBBs&PBDEs)	BL	--	
		Phthalate(DBP/BBP /DEHP/DIBP)	--	N.D.	
26	Silver metal wire	Pb	BL	--	Pass
		Cd	BL	--	
		Hg	BL	--	
		Cr(Cr(VI))	BL	--	
		Br(PBBs&PBDEs)	/	/	
		Phthalate(DBP/BBP /DEHP/DIBP)	/	/	
27	Blue wire sheath	Pb	BL	--	Pass
		Cd	BL	--	
		Hg	BL	--	
		Cr(Cr(VI))	BL	--	
		Br(PBBs&PBDEs)	BL	--	
		Phthalate(DBP/BBP /DEHP/DIBP)	--	N.D.	
28	Blue wire sheath	Pb	BL	--	Pass
		Cd	BL	--	
		Hg	BL	--	
		Cr(Cr(VI))	BL	--	
		Br(PBBs&PBDEs)	BL	--	
		Phthalate(DBP/BBP /DEHP/DIBP)	--	N.D.	
29	Green wire sheath	Pb	BL	--	Pass
		Cd	BL	--	
		Hg	BL	--	
		Cr(Cr(VI))	BL	--	
		Br(PBBs&PBDEs)	BL	--	
		Phthalate(DBP/BBP /DEHP/DIBP)	--	N.D.	

TEST REPORT

Report No.: MTI250815018-0112C1

Part No.	Sample Description	Test item	XRF Result	Chemical Test (mg/kg)	Conclusion
30	Yellow wire sheath	Pb	BL	--	Pass
		Cd	BL	--	
		Hg	BL	--	
		Cr(Cr(VI))	BL	--	
		Br(PBBs&PBDEs)	BL	--	
		Phthalate(DBP/BBP /DEHP/DIBP)	--	N.D.	
31	Red wire sheath	Pb	BL	--	Pass
		Cd	BL	--	
		Hg	BL	--	
		Cr(Cr(VI))	BL	--	
		Br(PBBs&PBDEs)	BL	--	
		Phthalate(DBP/BBP /DEHP/DIBP)	--	N.D.	
32	Yellow wire	Pb	BL	--	Pass
		Cd	BL	--	
		Hg	BL	--	
		Cr(Cr(VI))	BL	--	
		Br(PBBs&PBDEs)	BL	--	
		Phthalate(DBP/BBP /DEHP/DIBP)	--	N.D.	
33	White wire sheath	Pb	BL	--	Pass
		Cd	BL	--	
		Hg	BL	--	
		Cr(Cr(VI))	BL	--	
		Br(PBBs&PBDEs)	BL	--	
		Phthalate(DBP/BBP /DEHP/DIBP)	--	N.D.	
34	Purper wire sheath	Pb	BL	--	Pass
		Cd	BL	--	
		Hg	BL	--	
		Cr(Cr(VI))	BL	--	
		Br(PBBs&PBDEs)	BL	--	
		Phthalate(DBP/BBP /DEHP/DIBP)	--	N.D.	

TEST REPORT

Report No.: MTI250815018-0112C1

Part No.	Sample Description	Test item	XRF Result	Chemical Test (mg/kg)	Conclusion
35	Grey wire sheath	Pb	BL	--	Pass
		Cd	BL	--	
		Hg	BL	--	
		Cr(Cr(VI))	BL	--	
		Br(PBBs&PBDEs)	BL	--	
		Phthalate(DBP/BBP /DEHP/DIBP)	--	N.D.	
36	Silver metal	Pb	BL	--	Pass
		Cd	BL	--	
		Hg	BL	--	
		Cr(Cr(VI))	BL	--	
		Br(PBBs&PBDEs)	/	/	
		Phthalate(DBP/BBP /DEHP/DIBP)	/	/	
37	Silver metal	Pb	BL	--	Pass
		Cd	BL	--	
		Hg	BL	--	
		Cr(Cr(VI))	BL	--	
		Br(PBBs&PBDEs)	/	/	
		Phthalate(DBP/BBP /DEHP/DIBP)	/	/	
38	Silver metal	Pb	BL	--	Pass
		Cd	BL	--	
		Hg	BL	--	
		Cr(Cr(VI))	BL	--	
		Br(PBBs&PBDEs)	/	/	
		Phthalate(DBP/BBP /DEHP/DIBP)	/	/	
39	Silver metal	Pb	BL	--	Pass
		Cd	BL	--	
		Hg	BL	--	
		Cr(Cr(VI))	BL	--	
		Br(PBBs&PBDEs)	/	/	
		Phthalate(DBP/BBP /DEHP/DIBP)	/	/	

TEST REPORT

Report No.: MTI250815018-0112C1

Part No.	Sample Description	Test item	XRF Result	Chemical Test (mg/kg)	Conclusion
40	Black plastic	Pb	BL	--	Pass
		Cd	BL	--	
		Hg	BL	--	
		Cr(Cr(VI))	BL	--	
		Br(PBBs&PBDEs)	BL	--	
		Phthalate(DBP/BBP /DEHP/DIBP)	--	N.D.	
41	Golden metal	Pb	BL	--	Pass
		Cd	BL	--	
		Hg	BL	--	
		Cr(Cr(VI))	BL	--	
		Br(PBBs&PBDEs)	/	/	
		Phthalate(DBP/BBP /DEHP/DIBP)	/	/	
42	Golden metal	Pb	BL	--	Pass
		Cd	BL	--	
		Hg	BL	--	
		Cr(Cr(VI))	BL	--	
		Br(PBBs&PBDEs)	/	/	
		Phthalate(DBP/BBP /DEHP/DIBP)	/	/	
43	Black plastic	Pb	BL	--	Pass
		Cd	BL	--	
		Hg	BL	--	
		Cr(Cr(VI))	BL	--	
		Br(PBBs&PBDEs)	BL	--	
		Phthalate(DBP/BBP /DEHP/DIBP)	--	N.D.	
44	Silver metal	Pb	BL	--	Pass
		Cd	BL	--	
		Hg	BL	--	
		Cr(Cr(VI))	BL	--	
		Br(PBBs&PBDEs)	/	/	
		Phthalate(DBP/BBP /DEHP/DIBP)	/	/	

TEST REPORT

Report No.: MTI250815018-0112C1

Part No.	Sample Description	Test item	XRF Result	Chemical Test (mg/kg)	Conclusion
45	Silver metal	Pb	BL	--	Pass
		Cd	BL	--	
		Hg	BL	--	
		Cr(Cr(VI))	BL	--	
		Br(PBBs&PBDEs)	/	/	
		Phthalate(DBP/BBP /DEHP/DIBP)	/	/	
46	Silver metal spring	Pb	BL	--	Pass
		Cd	BL	--	
		Hg	BL	--	
		Cr(Cr(VI))	X	N.D.	
		Br(PBBs&PBDEs)	/	/	
		Phthalate(DBP/BBP /DEHP/DIBP)	/	/	
47	Black plastic	Pb	BL	--	Pass
		Cd	BL	--	
		Hg	BL	--	
		Cr(Cr(VI))	BL	--	
		Br(PBBs&PBDEs)	BL	--	
		Phthalate(DBP/BBP /DEHP/DIBP)	--	N.D.	
48	White glue	Pb	BL	--	Pass
		Cd	BL	--	
		Hg	BL	--	
		Cr(Cr(VI))	BL	--	
		Br(PBBs&PBDEs)	BL	--	
		Phthalate(DBP/BBP /DEHP/DIBP)	--	N.D.	
49	Silver metal	Pb	BL	--	Pass
		Cd	BL	--	
		Hg	BL	--	
		Cr(Cr(VI))	BL	--	
		Br(PBBs&PBDEs)	/	/	
		Phthalate(DBP/BBP /DEHP/DIBP)	/	/	

TEST REPORT

Report No.: MTI250815018-0112C1

Part No.	Sample Description	Test item	XRF Result	Chemical Test (mg/kg)	Conclusion
50	Silver metal	Pb	BL	--	Pass
		Cd	BL	--	
		Hg	BL	--	
		Cr(Cr(VI))	BL	--	
		Br(PBBs&PBDEs)	/	/	
		Phthalate(DBP/BBP /DEHP/DIBP)	/	/	
51	Silver metal	Pb	BL	--	Pass
		Cd	BL	--	
		Hg	BL	--	
		Cr(Cr(VI))	BL	--	
		Br(PBBs&PBDEs)	/	/	
		Phthalate(DBP/BBP /DEHP/DIBP)	/	/	
52	Silver metal	Pb	BL	--	Pass
		Cd	BL	--	
		Hg	BL	--	
		Cr(Cr(VI))	BL	--	
		Br(PBBs&PBDEs)	/	/	
		Phthalate(DBP/BBP /DEHP/DIBP)	/	/	
53	Black plastic	Pb	BL	--	Pass
		Cd	BL	--	
		Hg	BL	--	
		Cr(Cr(VI))	BL	--	
		Br(PBBs&PBDEs)	BL	--	
		Phthalate(DBP/BBP /DEHP/DIBP)	--	N.D.	
54	Black plastic	Pb	BL	--	Pass
		Cd	BL	--	
		Hg	BL	--	
		Cr(Cr(VI))	BL	--	
		Br(PBBs&PBDEs)	BL	--	
		Phthalate(DBP/BBP /DEHP/DIBP)	--	N.D.	

TEST REPORT

Report No.: MTI250815018-0112C1

Part No.	Sample Description	Test item	XRF Result	Chemical Test (mg/kg)	Conclusion
55	Black plastic	Pb	BL	--	Pass
		Cd	BL	--	
		Hg	BL	--	
		Cr(Cr(VI))	BL	--	
		Br(PBBs&PBDEs)	BL	--	
		Phthalate(DBP/BBP /DEHP/DIBP)	--	N.D.	
56	IC	Pb	BL	--	Pass
		Cd	BL	--	
		Hg	BL	--	
		Cr(Cr(VI))	BL	--	
		Br(PBBs&PBDEs)	BL	--	
		Phthalate(DBP/BBP /DEHP/DIBP)	--	N.D.	
57	IC	Pb	BL	--	Pass
		Cd	BL	--	
		Hg	BL	--	
		Cr(Cr(VI))	BL	--	
		Br(PBBs&PBDEs)	BL	--	
		Phthalate(DBP/BBP /DEHP/DIBP)	--	N.D.	
58	IC	Pb	BL	--	Pass
		Cd	BL	--	
		Hg	BL	--	
		Cr(Cr(VI))	BL	--	
		Br(PBBs&PBDEs)	BL	--	
		Phthalate(DBP/BBP /DEHP/DIBP)	--	N.D.	
59	IC	Pb	BL	--	Pass
		Cd	BL	--	
		Hg	BL	--	
		Cr(Cr(VI))	BL	--	
		Br(PBBs&PBDEs)	BL	--	
		Phthalate(DBP/BBP /DEHP/DIBP)	--	N.D.	

TEST REPORT

Report No.: MTI250815018-0112C1

Part No.	Sample Description	Test item	XRF Result	Chemical Test (mg/kg)	Conclusion
60	Solder	Pb	BL	--	Pass
		Cd	BL	--	
		Hg	BL	--	
		Cr(Cr(VI))	BL	--	
		Br(PBBs&PBDEs)	/	/	
		Phthalate(DBP/BBP /DEHP/DIBP)	/	/	

Remark:

- (1) (a) It is the result on total Br while test item on restricted substances is PBBs/PBDEs. It is the result on total Cr while test item on restricted substances is Cr⁶⁺.
 (b) Results are obtained by XRF for primary screening, and further chemical testing by ICP-OES (for Cd, Pb, Hg), UV-Vis (for Cr(VI)) and GC-MS (for PBBs, PBDEs) is recommended to be performed, if the concentration exceeds the below warning value according to BS EN 62321-3-1:2013 (unit: mg/kg).

Element	Polymers	Metals	Composite Material
Cd	$BL \leq (70-3\sigma) < X < (130+3\sigma) \leq OL$	$BL \leq (70-3\sigma) < X < (130+3\sigma) \leq OL$	$LOD < X < (150+3\sigma) \leq OL$
Pb	$BL \leq (700-3\sigma) < X < (1300+3\sigma) \leq OL$	$BL \leq (700-3\sigma) < X < (1300+3\sigma) \leq OL$	$BL \leq (500-3\sigma) < X < (1500+3\sigma) \leq OL$
Hg	$BL \leq (700-3\sigma) < X < (1300+3\sigma) \leq OL$	$BL \leq (700-3\sigma) < X < (1300+3\sigma) \leq OL$	$BL \leq (500-3\sigma) < X < (1500+3\sigma) \leq OL$
Cr	$BL \leq (700-3\sigma) < X$	$BL \leq (700-3\sigma) < X$	$BL \leq (500-3\sigma) < X$
Br	$BL \leq (300-3\sigma) < X$	NA	$BL \leq (250-3\sigma) < X$

(c) OL=Over Limit, BL=Below Limit, X=inconclusive, LOD=Limit of Detection, /=not applicable, -- = No Testing

(d) The XRF screening test for RoHS elements-The reading may be different to the actual content in the sample be of non-uniformity composition

(2) (a) mg/kg=ppm=0.0001%, N.D.=not detected (<MDL)

(b) Unit and Method Detection Limit(MDL) in wet chemical test

Test Items	Unit	MDL	Limit
Pb	mg/kg	2	1000
Cd	mg/kg	2	100
Hg	mg/kg	2	1000
DBP	mg/kg	30	1000
BBP	mg/kg	30	1000
DEHP	mg/kg	30	1000

TEST REPORT

Report No.: MTi250815018-0112C1

DIBP	mg/kg	30	1000
------	-------	----	------

The MDL for single compound of PBBs & PBDEs is 20mg/kg, MDL of Cr⁶⁺ for metal sample is 0.10µg/cm². and MDL of Cr⁶⁺ for polymer & composite sample is 8 mg/kg.

(c) Metal sample:

-The sample is positive for Cr⁶⁺ if the Cr⁶⁺ concentration is greater than 0.13 µg/cm².

The sample coating is considered to contain Cr⁶⁺.

-The sample is negative for Cr⁶⁺ if Cr⁶⁺ is ND (concentration less than 0.10 µg/cm²).

The coating is considered a non- Cr⁶⁺ based coating

-The result between 0.10 µg/cm² and 0.13 µg/cm² is considered to be inconclusive, unavoidable coating variations may influence the determination

Information on storage conditions and production date of the tested sample is unavailable and thus Cr⁶⁺ results represent status of the sample at the time of testing.

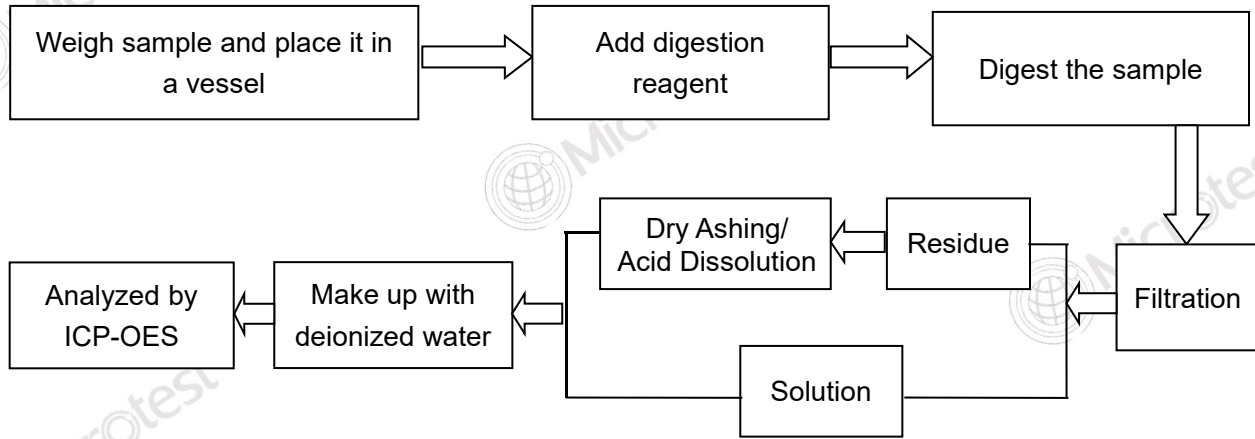
(3) As specified by client to test the specified materials only.

TEST REPORT

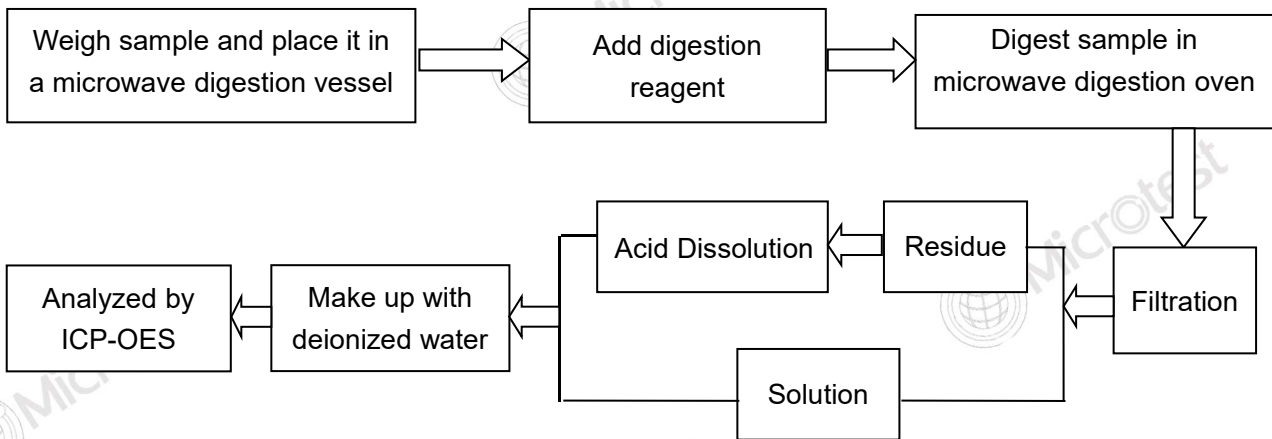
Report No.: MTi250815018-0112C1

Testing flow chart:

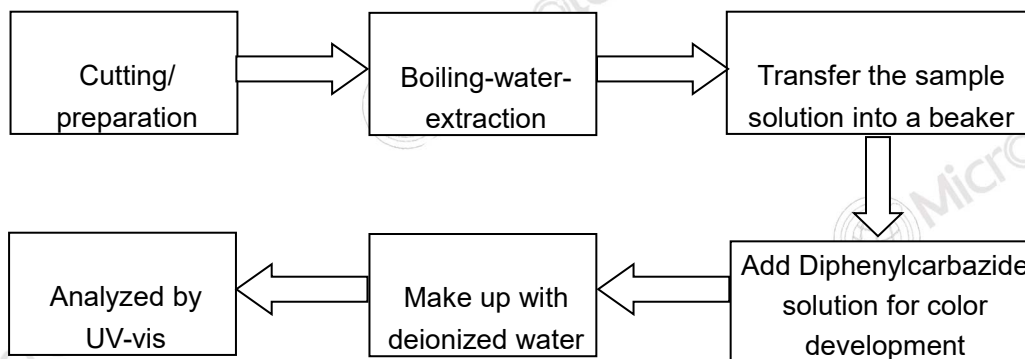
1. Lead, Cadmium



2. Mercury



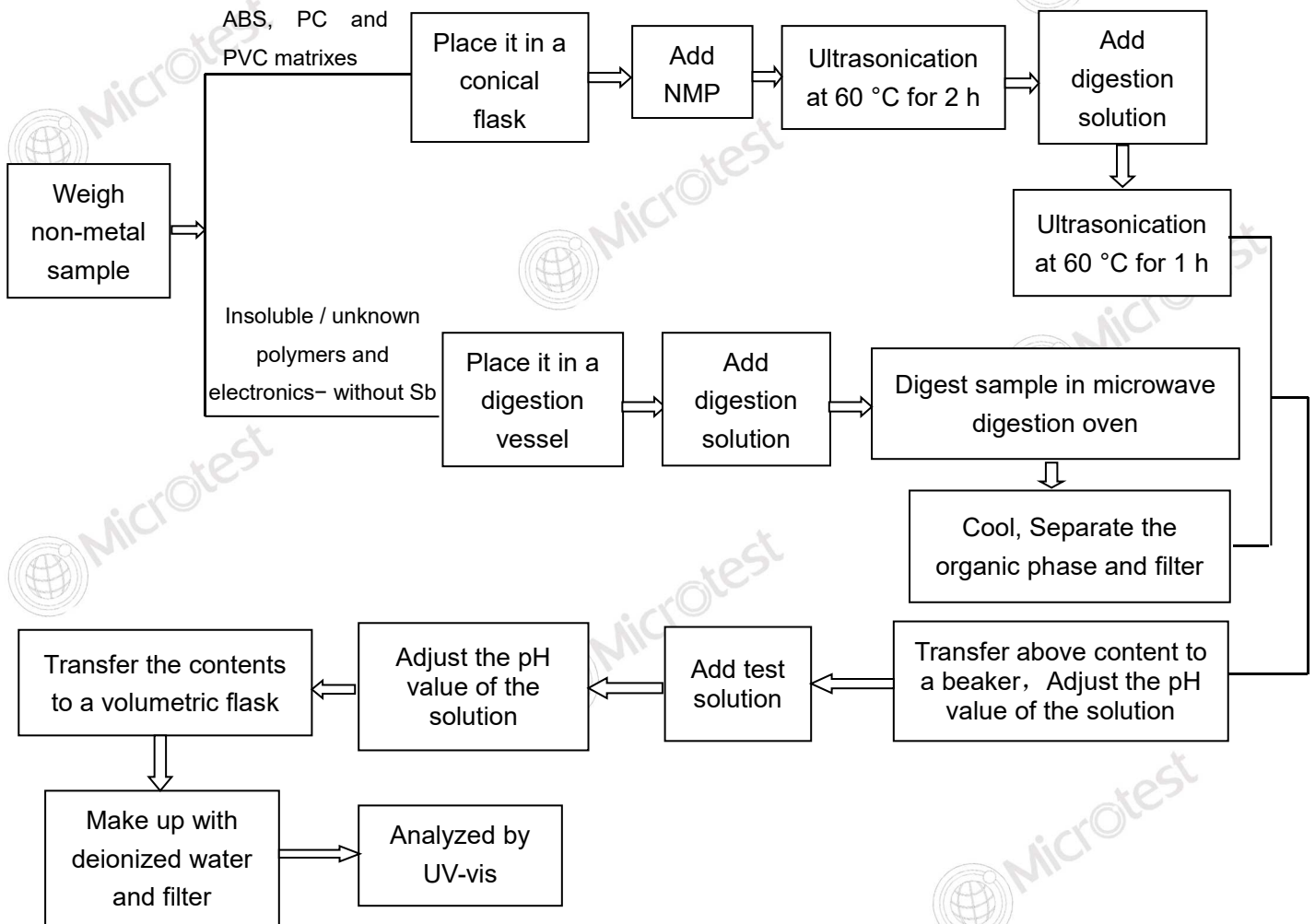
3. Hexavalent Chromium (For metal material)



4. Hexavalent Chromium(For non-metal material):

TEST REPORT

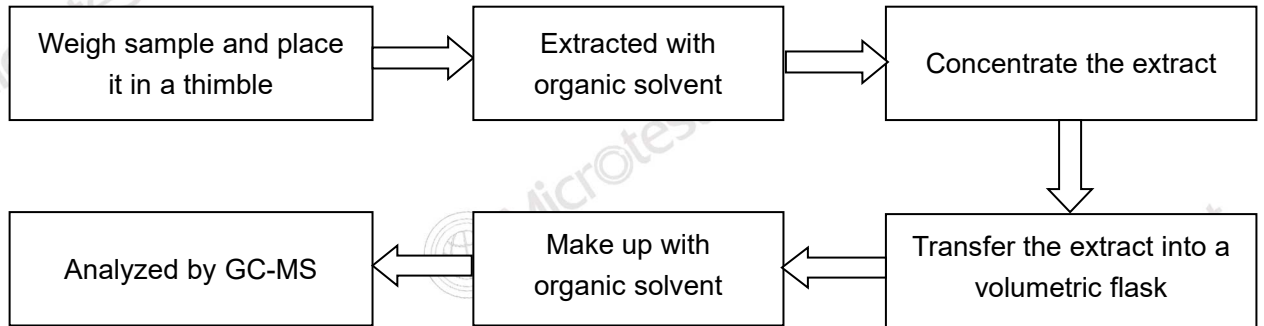
Report No.: MTI250815018-0112C1



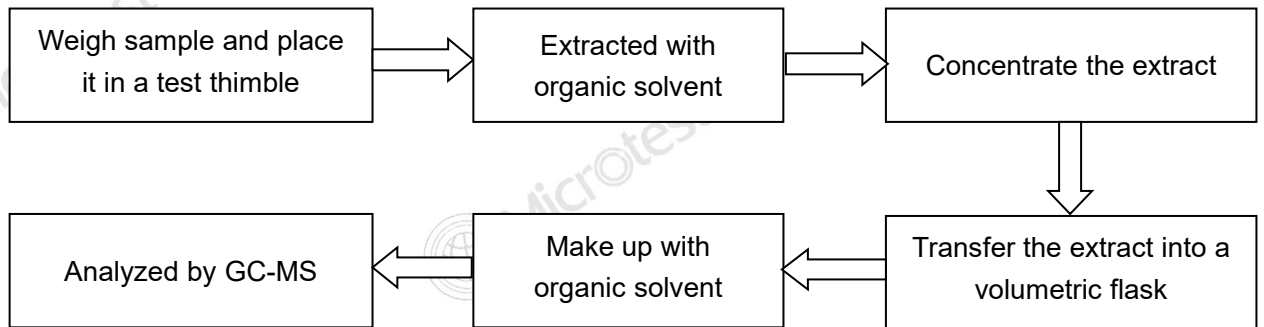
TEST REPORT

Report No.: MTI250815018-0112C1

5. Polybromobiphenyls (PBBs), Polybromodiphenyl ethers (PBDEs)



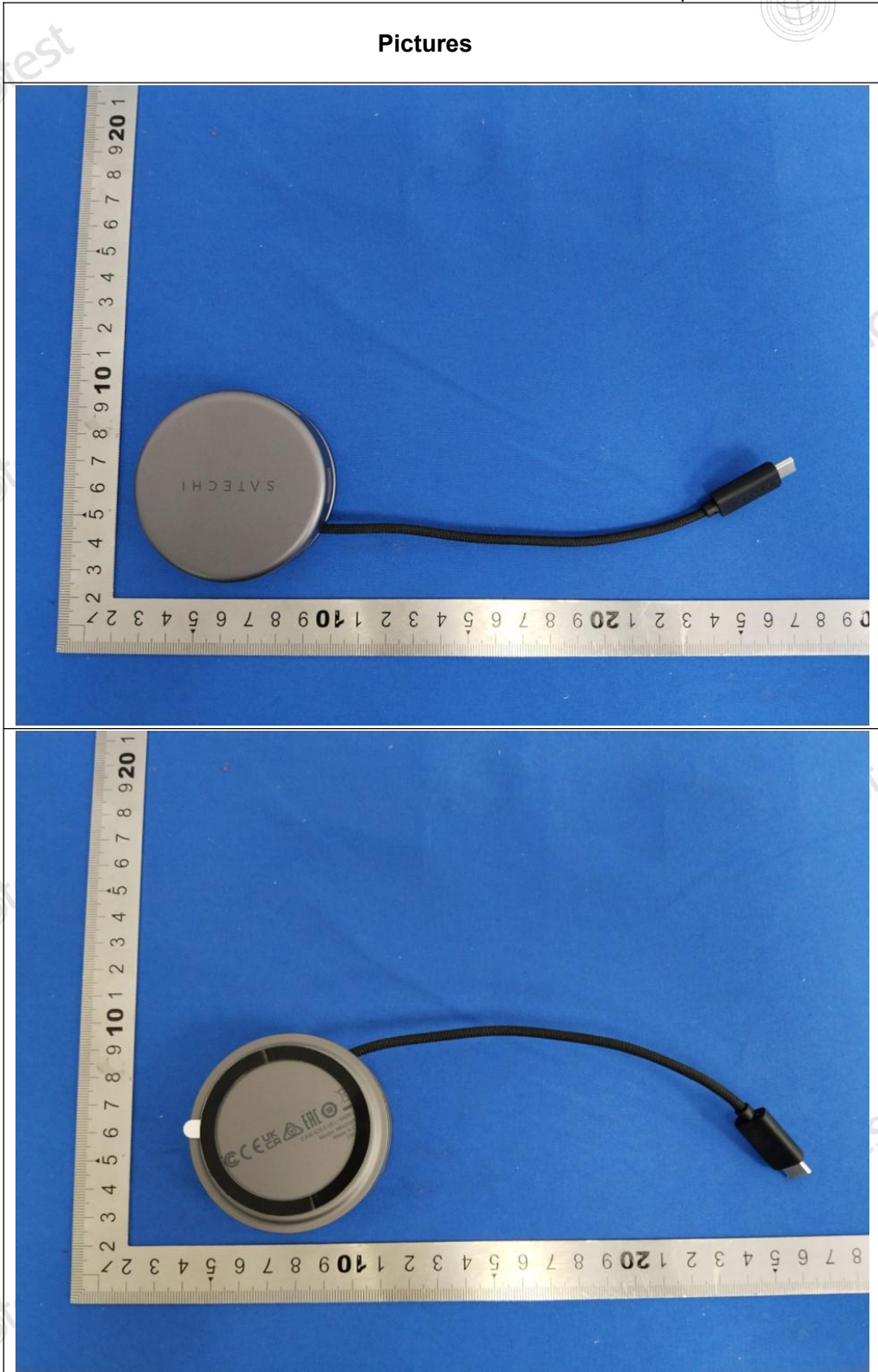
6. Phthalates(DBP, BBP, DEHP, DIBP)



TEST REPORT

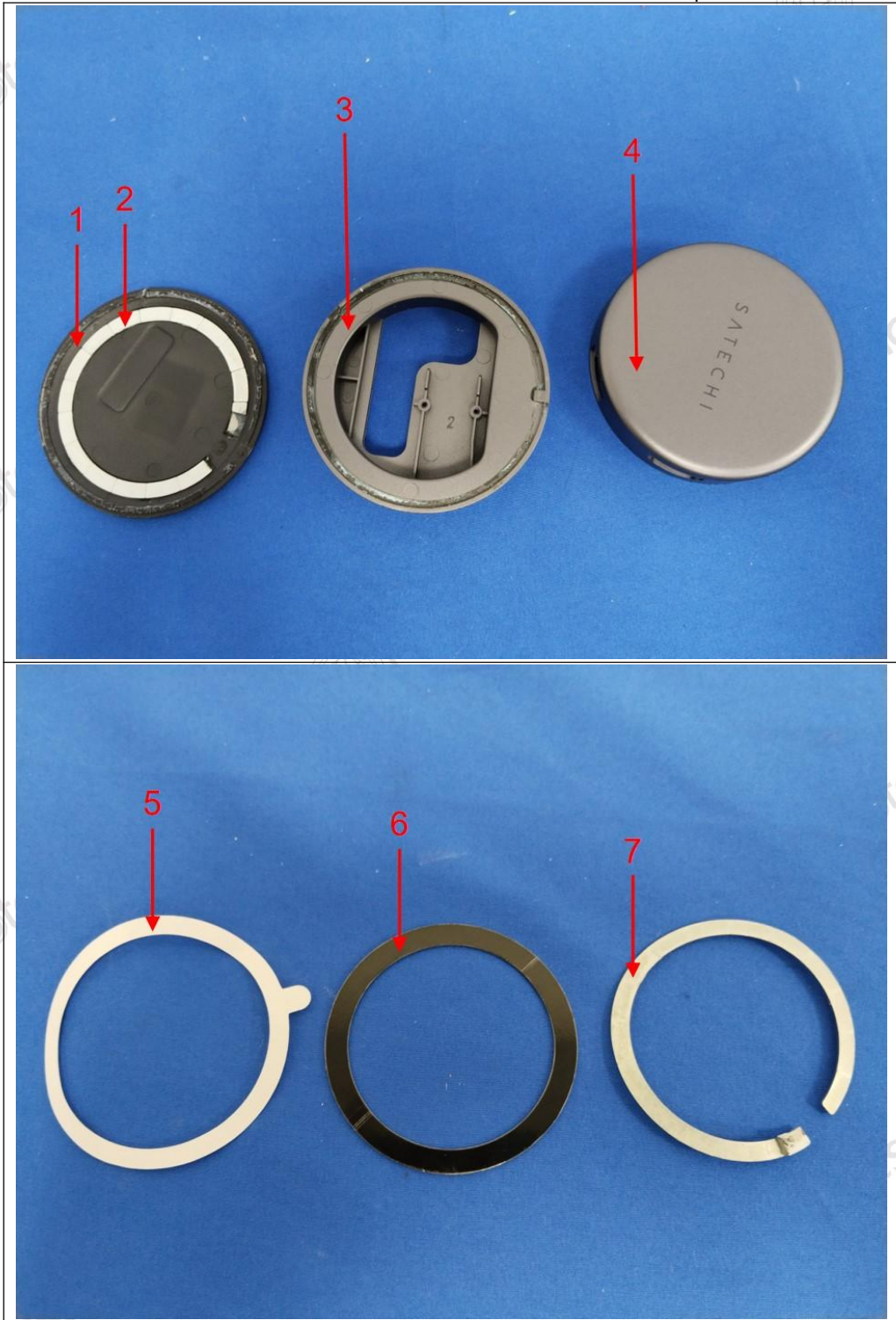
Report No.: MTi250815018-0112C1

Pictures



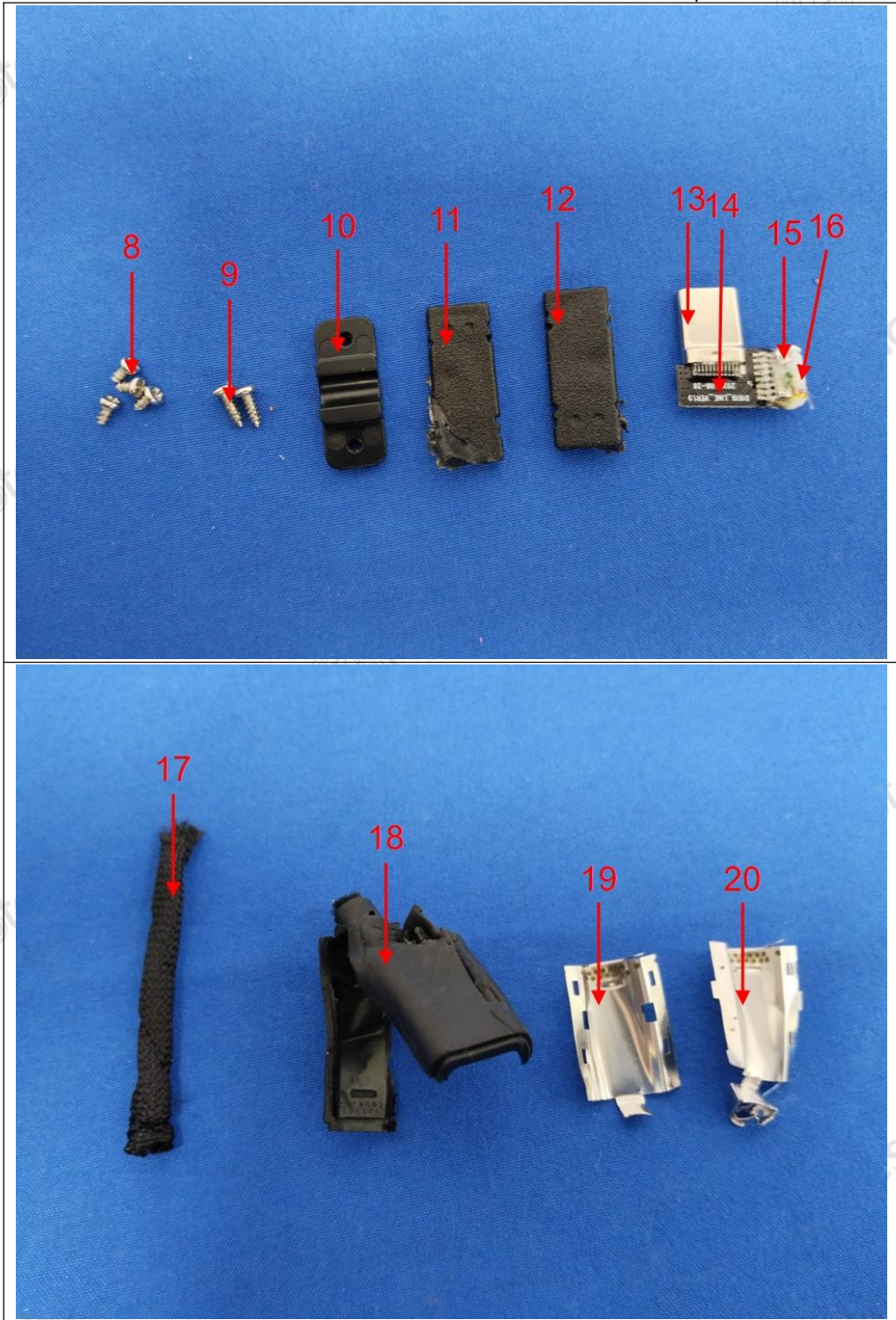
TEST REPORT

Report No.: MTi250815018-0112C1



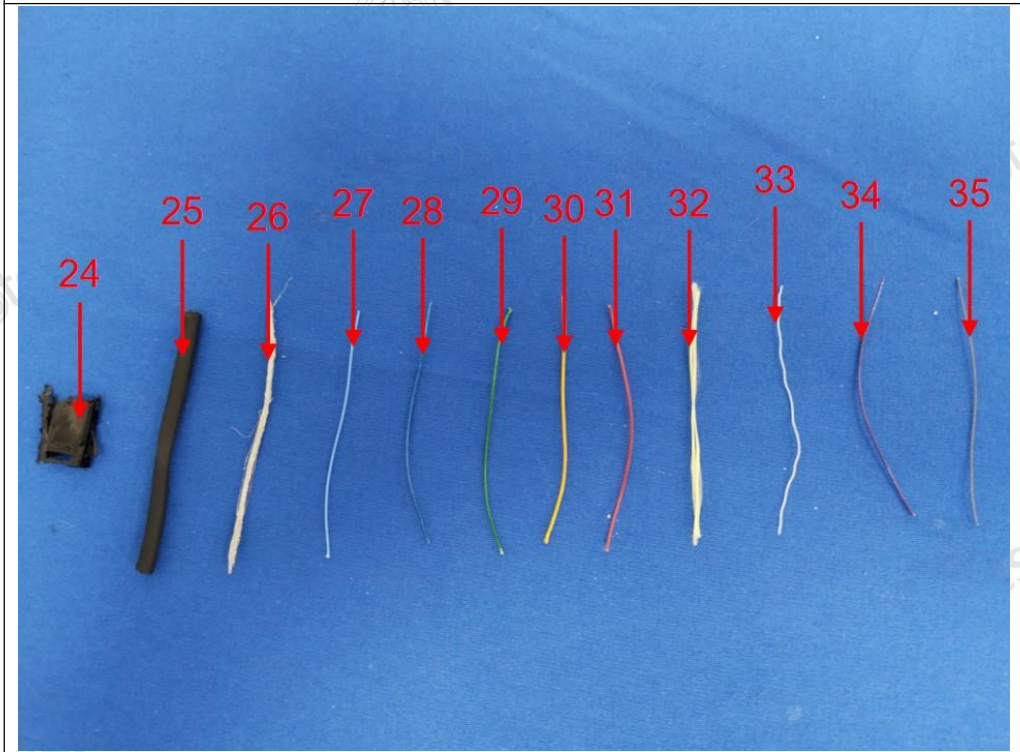
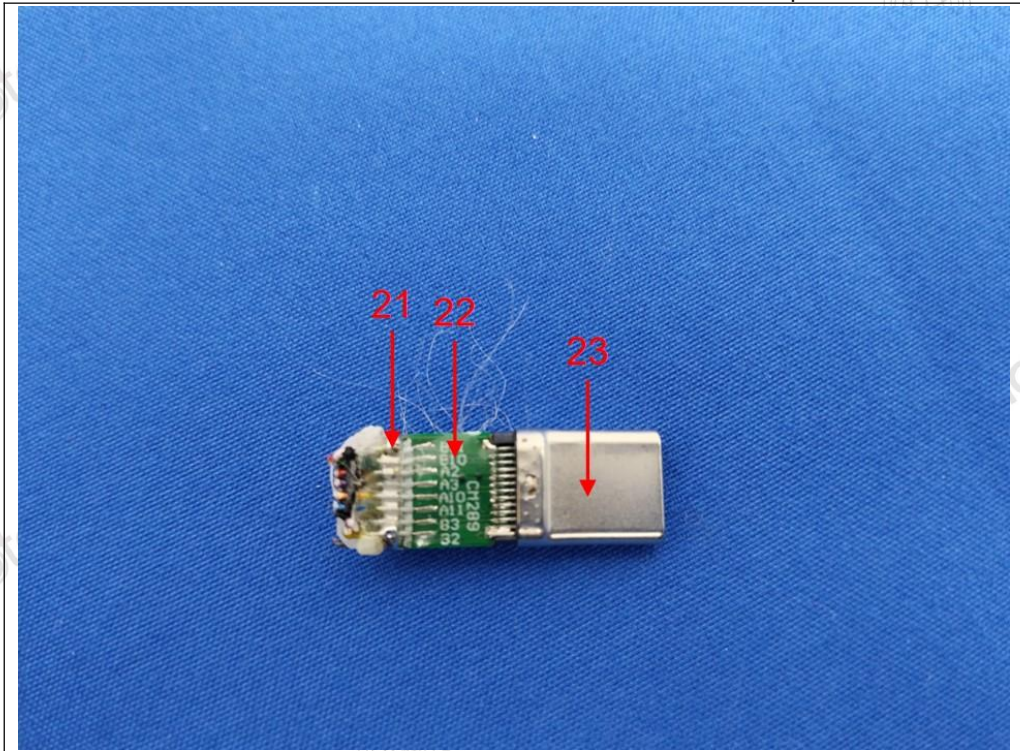
TEST REPORT

Report No.: MTi250815018-0112C1



TEST REPORT

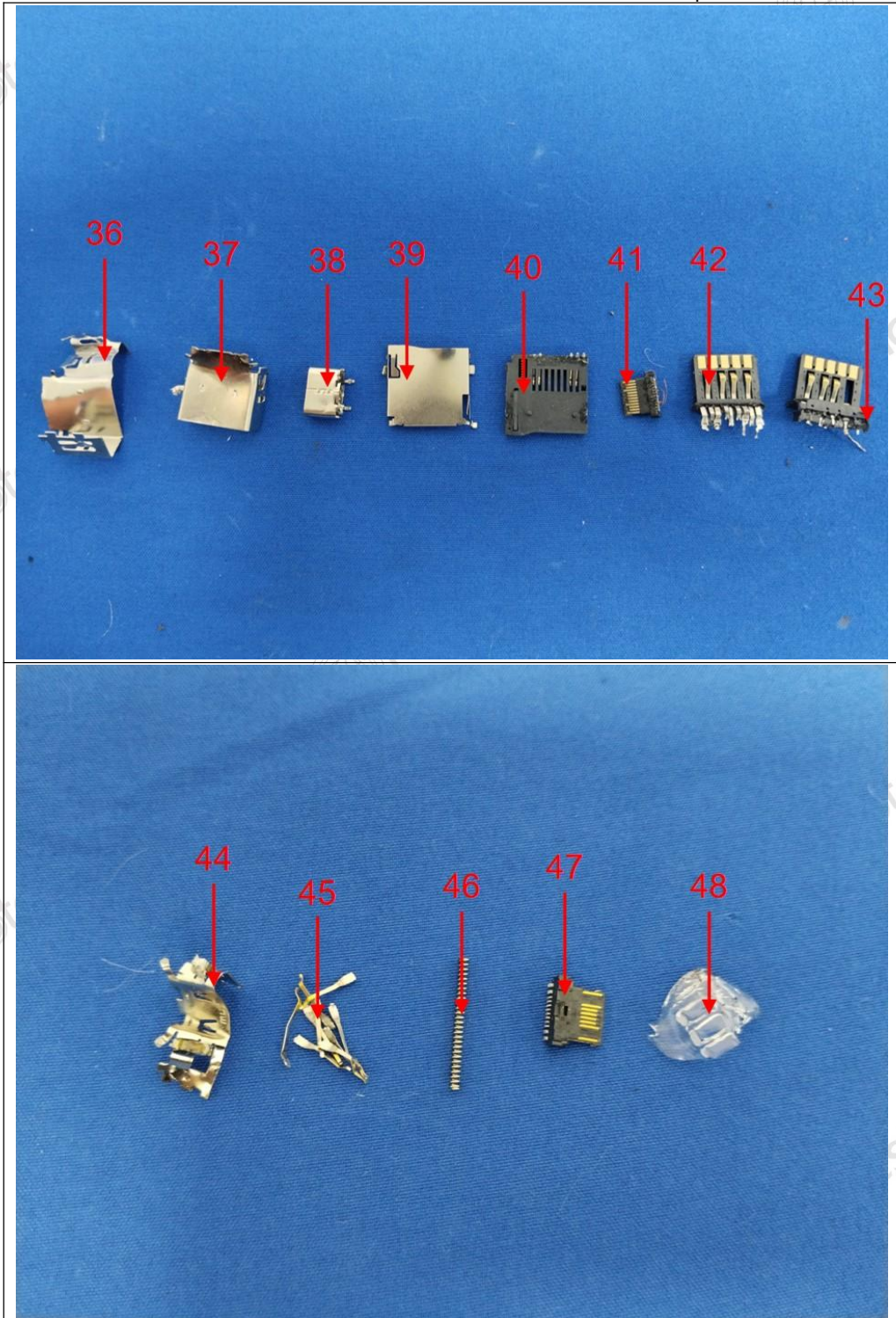
Report No.: MTi250815018-0112C1





TEST REPORT

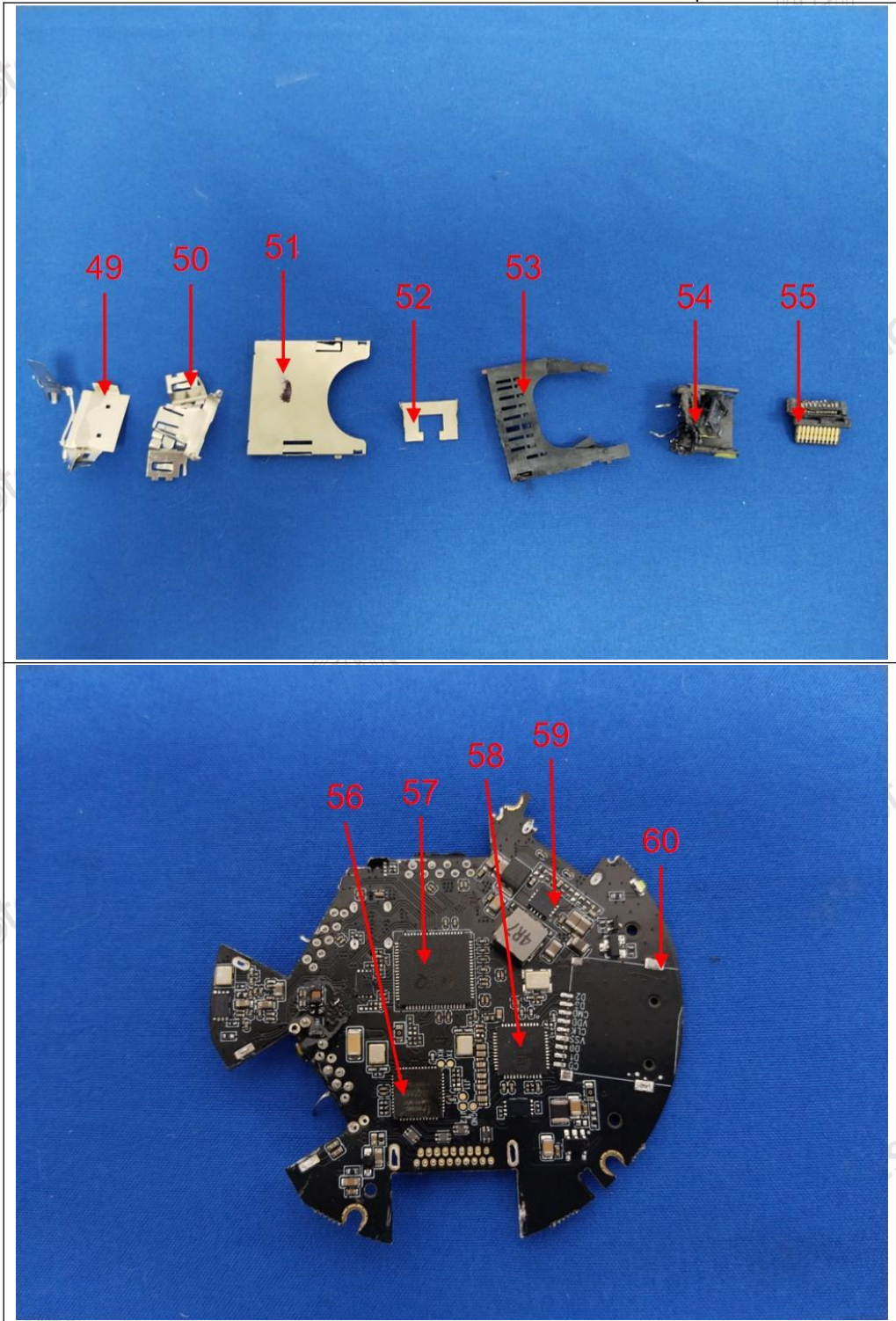
Report No.: MTi250815018-0112C1





TEST REPORT

Report No.: MTi250815018-0112C1



Statement

1. This report is invalid without the seal and signature of the laboratory.
2. The test results of this report are only responsible for the samples submitted. Client shall be responsible for representativeness of the sample and authenticity of the material.
3. The report shall not be partially reproduced without the written consent of the Laboratory.
4. This report is invalid if transferred, altered or tampered with in any form without authorization.
5. The observations or tests with special mark fall outside the scope of accreditation, and are only used for purpose of commission, research, training, internal quality control etc.
6. Any objection to this report shall be submitted to the laboratory within 15 days from the date of receipt of the report.

***** END OF REPORT *****