

# Test Report

**Report No. : MTi250815018-0106C1**

**Date of Issue : October 16, 2025**

**Applicant : Sariana LLC**

**Product : OntheGo 7-in-1 Multiport Adapter**

**Test Type : Commissioned Inspection**

**Shenzhen Microtest Co., Ltd.**



# TEST REPORT

Report No.: MTI250815018-0106C1

Basic Information			
Applicant	Sariana LLC		
Applicant Address	7365 Mission Gorge Rd, Suite G, San Diego, CA 92120, USA		
Manufacturer	Sariana LLC		
Manufacturer Address	7365 Mission Gorge Rd, Suite G, San Diego, CA 92120, USA		
Sample Information			
Product	OntheGo 7-in-1 Multiport Adapter	Main test Model	MN25STI03
Serial Model	/	Brand/ Trademark	S A T E C H I
Sample Number	1	Model difference	/
Testing Information			
Sample Receive Date	October 11, 2025	Sample Source	Customer provided
Test Specification	With reference to RoHS Directive 2011/65/EU and its amending (EU) 2015/863 (RoHS 2.0) .		
Date of Tests	October 11, 2025-October 16, 2025		
Test Address	Chemistry laboratory		
Test Results	Please refer to next page(s).		
Test Conclusion	The submitted sample(s) complied with the Lead(Pb), Cadmium(Cd), Mercury(Hg), Hexavalent Chromium(Cr(VI)), PBBs, PBDEs, DBP, BBP, DEHP, DIBP content requirement according to RoHS Directive 2011/65/EU and its amending (EU) 2015/863 (RoHS 2.0).		
Prepared by:	Rita Li	 	
Reviewed by:	Sunshing Chen		
Approved by:	Tina Huang		

## TEST REPORT

Report No.: MTI250815018-0106C1

### Test Method:

1. IEC 62321-3-1:2013, screening by XRF spectroscopy.
2. Wet chemical test method.
  - a. IEC 62321-5:2013, determination of Cadmium by ICP-OES.
  - b. IEC 62321-5:2013, determination of Lead by ICP-OES.
  - c. IEC 62321-4:2013+AMD1:2017, determination of Mercury by ICP-OES.
  - d. IEC 62321-7-1:2015 & IEC 62321-7-2:2017, determination of Hexavalent chromium by Colorimetric method using UV-Vis.
  - e. IEC 62321-6:2015, determination of PBBs and PBDEs by GC-MS.
  - f. IEC 62321-8: 2017, determination of phthalates by GC-MS.

# TEST REPORT

Report No.: MTI250815018-0106C1

**Test Results:**

Part No.	Sample Description	Test item	XRF Result	Chemical Test (mg/kg)	Conclusion
1	Black plastic	Pb	BL	--	Pass
		Cd	BL	--	
		Hg	BL	--	
		Cr(Cr(VI))	BL	--	
		Br(PBBs&PBDEs)	BL	--	
		Phthalate(DBP/BBP /DEHP/DIBP)	--	N.D.	
2	Silver magnet	Pb	BL	--	Pass
		Cd	BL	--	
		Hg	BL	--	
		Cr(Cr(VI))	BL	--	
		Br(PBBs&PBDEs)	/	/	
		Phthalate(DBP/BBP /DEHP/DIBP)	/	/	
3	Grey plastic	Pb	BL	--	Pass
		Cd	BL	--	
		Hg	BL	--	
		Cr(Cr(VI))	BL	--	
		Br(PBBs&PBDEs)	BL	--	
		Phthalate(DBP/BBP /DEHP/DIBP)	--	N.D.	
4	Grey plastic	Pb	BL	--	Pass
		Cd	BL	--	
		Hg	BL	--	
		Cr(Cr(VI))	BL	--	
		Br(PBBs&PBDEs)	BL	--	
		Phthalate(DBP/BBP /DEHP/DIBP)	--	N.D.	

## TEST REPORT

Report No.: MTI250815018-0106C1

Part No.	Sample Description	Test item	XRF Result	Chemical Test (mg/kg)	Conclusion
5	White plastic	Pb	BL	--	Pass
		Cd	BL	--	
		Hg	BL	--	
		Cr(Cr(VI))	BL	--	
		Br(PBBs&PBDEs)	BL	--	
		Phthalate(DBP/BBP /DEHP/DIBP)	--	N.D.	
6	Black-coated silver metal	Pb	BL	--	Pass
		Cd	BL	--	
		Hg	BL	--	
		Cr(Cr(VI))	BL	--	
		Br(PBBs&PBDEs)	/	/	
		Phthalate(DBP/BBP /DEHP/DIBP)	/	/	
7	Silver metal	Pb	BL	--	Pass
		Cd	BL	--	
		Hg	BL	--	
		Cr(Cr(VI))	BL	--	
		Br(PBBs&PBDEs)	/	/	
		Phthalate(DBP/BBP /DEHP/DIBP)	/	/	
8	Silver metal screw	Pb	BL	--	Pass
		Cd	BL	--	
		Hg	BL	--	
		Cr(Cr(VI))	BL	--	
		Br(PBBs&PBDEs)	/	/	
		Phthalate(DBP/BBP /DEHP/DIBP)	/	/	
9	Silver metal screw	Pb	BL	--	Pass
		Cd	BL	--	
		Hg	BL	--	
		Cr(Cr(VI))	BL	--	
		Br(PBBs&PBDEs)	/	/	
		Phthalate(DBP/BBP /DEHP/DIBP)	/	/	

## TEST REPORT

Report No.: MTI250815018-0106C1

Part No.	Sample Description	Test item	XRF Result	Chemical Test (mg/kg)	Conclusion
10	Black plastic	Pb	BL	--	Pass
		Cd	BL	--	
		Hg	BL	--	
		Cr(Cr(VI))	BL	--	
		Br(PBBs&PBDEs)	BL	--	
		Phthalate(DBP/BBP /DEHP/DIBP)	--	N.D.	
11	Black plastic	Pb	BL	--	Pass
		Cd	BL	--	
		Hg	BL	--	
		Cr(Cr(VI))	BL	--	
		Br(PBBs&PBDEs)	BL	--	
		Phthalate(DBP/BBP /DEHP/DIBP)	--	N.D.	
12	Black plastic	Pb	BL	--	Pass
		Cd	BL	--	
		Hg	BL	--	
		Cr(Cr(VI))	BL	--	
		Br(PBBs&PBDEs)	BL	--	
		Phthalate(DBP/BBP /DEHP/DIBP)	--	N.D.	
13	Silver metal	Pb	BL	--	Pass
		Cd	BL	--	
		Hg	BL	--	
		Cr(Cr(VI))	BL	--	
		Br(PBBs&PBDEs)	/	/	
		Phthalate(DBP/BBP /DEHP/DIBP)	/	/	
14	PCB	Pb	BL	--	Pass
		Cd	BL	--	
		Hg	BL	--	
		Cr(Cr(VI))	BL	--	
		Br(PBBs&PBDEs)	BL	--	
		Phthalate(DBP/BBP /DEHP/DIBP)	--	N.D.	

## TEST REPORT

Report No.: MTI250815018-0106C1

Part No.	Sample Description	Test item	XRF Result	Chemical Test (mg/kg)	Conclusion
15	Solder	Pb	BL	--	Pass
		Cd	BL	--	
		Hg	BL	--	
		Cr(Cr(VI))	BL	--	
		Br(PBBs&PBDEs)	/	/	
		Phthalate(DBP/BBP /DEHP/DIBP)	/	/	
16	White glue	Pb	BL	--	Pass
		Cd	BL	--	
		Hg	BL	--	
		Cr(Cr(VI))	BL	--	
		Br(PBBs&PBDEs)	BL	--	
		Phthalate(DBP/BBP /DEHP/DIBP)	--	N.D.	
17	Black wire sheath	Pb	BL	--	Pass
		Cd	BL	--	
		Hg	BL	--	
		Cr(Cr(VI))	BL	--	
		Br(PBBs&PBDEs)	BL	--	
		Phthalate(DBP/BBP /DEHP/DIBP)	--	N.D.	
18	Black plastic	Pb	BL	--	Pass
		Cd	BL	--	
		Hg	BL	--	
		Cr(Cr(VI))	BL	--	
		Br(PBBs&PBDEs)	BL	--	
		Phthalate(DBP/BBP /DEHP/DIBP)	--	N.D.	
19	Silver metal	Pb	BL	--	Pass
		Cd	BL	--	
		Hg	BL	--	
		Cr(Cr(VI))	X	N.D.	
		Br(PBBs&PBDEs)	/	/	
		Phthalate(DBP/BBP /DEHP/DIBP)	/	/	

## TEST REPORT

Report No.: MTI250815018-0106C1

Part No.	Sample Description	Test item	XRF Result	Chemical Test (mg/kg)	Conclusion
20	Silver metal	Pb	BL	--	Pass
		Cd	BL	--	
		Hg	BL	--	
		Cr(Cr(VI))	X	N.D.	
		Br(PBBs&PBDEs)	/	/	
		Phthalate(DBP/BBP /DEHP/DIBP)	/	/	
21	Solder	Pb	BL	--	Pass
		Cd	BL	--	
		Hg	BL	--	
		Cr(Cr(VI))	BL	--	
		Br(PBBs&PBDEs)	/	/	
		Phthalate(DBP/BBP /DEHP/DIBP)	/	/	
22	PCB	Pb	BL	--	Pass
		Cd	BL	--	
		Hg	BL	--	
		Cr(Cr(VI))	BL	--	
		Br(PBBs&PBDEs)	BL	--	
		Phthalate(DBP/BBP /DEHP/DIBP)	--	N.D.	
23	Silver metal	Pb	BL	--	Pass
		Cd	BL	--	
		Hg	BL	--	
		Cr(Cr(VI))	BL	--	
		Br(PBBs&PBDEs)	/	/	
		Phthalate(DBP/BBP /DEHP/DIBP)	/	/	
24	Black plastic	Pb	BL	--	Pass
		Cd	BL	--	
		Hg	BL	--	
		Cr(Cr(VI))	BL	--	
		Br(PBBs&PBDEs)	BL	--	
		Phthalate(DBP/BBP /DEHP/DIBP)	--	N.D.	

## TEST REPORT

Report No.: MTI250815018-0106C1

Part No.	Sample Description	Test item	XRF Result	Chemical Test (mg/kg)	Conclusion
25	Black wire sheath	Pb	BL	--	Pass
		Cd	BL	--	
		Hg	BL	--	
		Cr(Cr(VI))	BL	--	
		Br(PBBs&PBDEs)	BL	--	
		Phthalate(DBP/BBP /DEHP/DIBP)	--	N.D.	
26	Silver metal wire	Pb	BL	--	Pass
		Cd	BL	--	
		Hg	BL	--	
		Cr(Cr(VI))	BL	--	
		Br(PBBs&PBDEs)	/	/	
		Phthalate(DBP/BBP /DEHP/DIBP)	/	/	
27	Blue wire sheath	Pb	BL	--	Pass
		Cd	BL	--	
		Hg	BL	--	
		Cr(Cr(VI))	BL	--	
		Br(PBBs&PBDEs)	BL	--	
		Phthalate(DBP/BBP /DEHP/DIBP)	--	N.D.	
28	Blue wire sheath	Pb	BL	--	Pass
		Cd	BL	--	
		Hg	BL	--	
		Cr(Cr(VI))	BL	--	
		Br(PBBs&PBDEs)	BL	--	
		Phthalate(DBP/BBP /DEHP/DIBP)	--	N.D.	
29	Green wire sheath	Pb	BL	--	Pass
		Cd	BL	--	
		Hg	BL	--	
		Cr(Cr(VI))	BL	--	
		Br(PBBs&PBDEs)	BL	--	
		Phthalate(DBP/BBP /DEHP/DIBP)	--	N.D.	

## TEST REPORT

Report No.: MTI250815018-0106C1

Part No.	Sample Description	Test item	XRF Result	Chemical Test (mg/kg)	Conclusion
30	Yellow wire sheath	Pb	BL	--	Pass
		Cd	BL	--	
		Hg	BL	--	
		Cr(Cr(VI))	BL	--	
		Br(PBBs&PBDEs)	BL	--	
		Phthalate(DBP/BBP /DEHP/DIBP)	--	N.D.	
31	Red wire sheath	Pb	BL	--	Pass
		Cd	BL	--	
		Hg	BL	--	
		Cr(Cr(VI))	BL	--	
		Br(PBBs&PBDEs)	BL	--	
		Phthalate(DBP/BBP /DEHP/DIBP)	--	N.D.	
32	Yellow wire	Pb	BL	--	Pass
		Cd	BL	--	
		Hg	BL	--	
		Cr(Cr(VI))	BL	--	
		Br(PBBs&PBDEs)	BL	--	
		Phthalate(DBP/BBP /DEHP/DIBP)	--	N.D.	
33	White wire sheath	Pb	BL	--	Pass
		Cd	BL	--	
		Hg	BL	--	
		Cr(Cr(VI))	BL	--	
		Br(PBBs&PBDEs)	BL	--	
		Phthalate(DBP/BBP /DEHP/DIBP)	--	N.D.	
34	Purper wire sheath	Pb	BL	--	Pass
		Cd	BL	--	
		Hg	BL	--	
		Cr(Cr(VI))	BL	--	
		Br(PBBs&PBDEs)	BL	--	
		Phthalate(DBP/BBP /DEHP/DIBP)	--	N.D.	

## TEST REPORT

Report No.: MTI250815018-0106C1

Part No.	Sample Description	Test item	XRF Result	Chemical Test (mg/kg)	Conclusion
35	Grey wire sheath	Pb	BL	--	Pass
		Cd	BL	--	
		Hg	BL	--	
		Cr(Cr(VI))	BL	--	
		Br(PBBs&PBDEs)	BL	--	
		Phthalate(DBP/BBP /DEHP/DIBP)	--	N.D.	
36	Silver metal	Pb	BL	--	Pass
		Cd	BL	--	
		Hg	BL	--	
		Cr(Cr(VI))	BL	--	
		Br(PBBs&PBDEs)	/	/	
		Phthalate(DBP/BBP /DEHP/DIBP)	/	/	
37	Silver metal	Pb	BL	--	Pass
		Cd	BL	--	
		Hg	BL	--	
		Cr(Cr(VI))	BL	--	
		Br(PBBs&PBDEs)	/	/	
		Phthalate(DBP/BBP /DEHP/DIBP)	/	/	
38	Silver metal	Pb	BL	--	Pass
		Cd	BL	--	
		Hg	BL	--	
		Cr(Cr(VI))	BL	--	
		Br(PBBs&PBDEs)	/	/	
		Phthalate(DBP/BBP /DEHP/DIBP)	/	/	
39	Silver metal	Pb	BL	--	Pass
		Cd	BL	--	
		Hg	BL	--	
		Cr(Cr(VI))	BL	--	
		Br(PBBs&PBDEs)	/	/	
		Phthalate(DBP/BBP /DEHP/DIBP)	/	/	

## TEST REPORT

Report No.: MTI250815018-0106C1

Part No.	Sample Description	Test item	XRF Result	Chemical Test (mg/kg)	Conclusion
40	Black plastic	Pb	BL	--	Pass
		Cd	BL	--	
		Hg	BL	--	
		Cr(Cr(VI))	BL	--	
		Br(PBBs&PBDEs)	BL	--	
		Phthalate(DBP/BBP /DEHP/DIBP)	--	N.D.	
41	Golden metal	Pb	BL	--	Pass
		Cd	BL	--	
		Hg	BL	--	
		Cr(Cr(VI))	BL	--	
		Br(PBBs&PBDEs)	/	/	
		Phthalate(DBP/BBP /DEHP/DIBP)	/	/	
42	Golden metal	Pb	BL	--	Pass
		Cd	BL	--	
		Hg	BL	--	
		Cr(Cr(VI))	BL	--	
		Br(PBBs&PBDEs)	/	/	
		Phthalate(DBP/BBP /DEHP/DIBP)	/	/	
43	Black plastic	Pb	BL	--	Pass
		Cd	BL	--	
		Hg	BL	--	
		Cr(Cr(VI))	BL	--	
		Br(PBBs&PBDEs)	BL	--	
		Phthalate(DBP/BBP /DEHP/DIBP)	--	N.D.	
44	Silver metal	Pb	BL	--	Pass
		Cd	BL	--	
		Hg	BL	--	
		Cr(Cr(VI))	BL	--	
		Br(PBBs&PBDEs)	/	/	
		Phthalate(DBP/BBP /DEHP/DIBP)	/	/	

## TEST REPORT

Report No.: MTI250815018-0106C1

Part No.	Sample Description	Test item	XRF Result	Chemical Test (mg/kg)	Conclusion
45	Silver metal	Pb	BL	--	Pass
		Cd	BL	--	
		Hg	BL	--	
		Cr(Cr(VI))	BL	--	
		Br(PBBs&PBDEs)	/	/	
		Phthalate(DBP/BBP /DEHP/DIBP)	/	/	
46	Silver metal spring	Pb	BL	--	Pass
		Cd	BL	--	
		Hg	BL	--	
		Cr(Cr(VI))	X	N.D.	
		Br(PBBs&PBDEs)	/	/	
		Phthalate(DBP/BBP /DEHP/DIBP)	/	/	
47	Black plastic	Pb	BL	--	Pass
		Cd	BL	--	
		Hg	BL	--	
		Cr(Cr(VI))	BL	--	
		Br(PBBs&PBDEs)	BL	--	
		Phthalate(DBP/BBP /DEHP/DIBP)	--	N.D.	
48	White glue	Pb	BL	--	Pass
		Cd	BL	--	
		Hg	BL	--	
		Cr(Cr(VI))	BL	--	
		Br(PBBs&PBDEs)	BL	--	
		Phthalate(DBP/BBP /DEHP/DIBP)	--	N.D.	
49	Silver metal	Pb	BL	--	Pass
		Cd	BL	--	
		Hg	BL	--	
		Cr(Cr(VI))	BL	--	
		Br(PBBs&PBDEs)	/	/	
		Phthalate(DBP/BBP /DEHP/DIBP)	/	/	

## TEST REPORT

Report No.: MTI250815018-0106C1

Part No.	Sample Description	Test item	XRF Result	Chemical Test (mg/kg)	Conclusion
50	Silver metal	Pb	BL	--	Pass
		Cd	BL	--	
		Hg	BL	--	
		Cr(Cr(VI))	BL	--	
		Br(PBBs&PBDEs)	/	/	
		Phthalate(DBP/BBP /DEHP/DIBP)	/	/	
51	Silver metal	Pb	BL	--	Pass
		Cd	BL	--	
		Hg	BL	--	
		Cr(Cr(VI))	BL	--	
		Br(PBBs&PBDEs)	/	/	
		Phthalate(DBP/BBP /DEHP/DIBP)	/	/	
52	Silver metal	Pb	BL	--	Pass
		Cd	BL	--	
		Hg	BL	--	
		Cr(Cr(VI))	BL	--	
		Br(PBBs&PBDEs)	/	/	
		Phthalate(DBP/BBP /DEHP/DIBP)	/	/	
53	Black plastic	Pb	BL	--	Pass
		Cd	BL	--	
		Hg	BL	--	
		Cr(Cr(VI))	BL	--	
		Br(PBBs&PBDEs)	BL	--	
		Phthalate(DBP/BBP /DEHP/DIBP)	--	N.D.	
54	Black plastic	Pb	BL	--	Pass
		Cd	BL	--	
		Hg	BL	--	
		Cr(Cr(VI))	BL	--	
		Br(PBBs&PBDEs)	BL	--	
		Phthalate(DBP/BBP /DEHP/DIBP)	--	N.D.	

## TEST REPORT

Report No.: MTI250815018-0106C1

Part No.	Sample Description	Test item	XRF Result	Chemical Test (mg/kg)	Conclusion
55	Black plastic	Pb	BL	--	Pass
		Cd	BL	--	
		Hg	BL	--	
		Cr(Cr(VI))	BL	--	
		Br(PBBs&PBDEs)	BL	--	
		Phthalate(DBP/BBP /DEHP/DIBP)	--	N.D.	
56	IC	Pb	BL	--	Pass
		Cd	BL	--	
		Hg	BL	--	
		Cr(Cr(VI))	BL	--	
		Br(PBBs&PBDEs)	BL	--	
		Phthalate(DBP/BBP /DEHP/DIBP)	--	N.D.	
57	IC	Pb	BL	--	Pass
		Cd	BL	--	
		Hg	BL	--	
		Cr(Cr(VI))	BL	--	
		Br(PBBs&PBDEs)	BL	--	
		Phthalate(DBP/BBP /DEHP/DIBP)	--	N.D.	
58	IC	Pb	BL	--	Pass
		Cd	BL	--	
		Hg	BL	--	
		Cr(Cr(VI))	BL	--	
		Br(PBBs&PBDEs)	BL	--	
		Phthalate(DBP/BBP /DEHP/DIBP)	--	N.D.	
59	IC	Pb	BL	--	Pass
		Cd	BL	--	
		Hg	BL	--	
		Cr(Cr(VI))	BL	--	
		Br(PBBs&PBDEs)	BL	--	
		Phthalate(DBP/BBP /DEHP/DIBP)	--	N.D.	

## TEST REPORT

Report No.: MTI250815018-0106C1

Part No.	Sample Description	Test item	XRF Result	Chemical Test (mg/kg)	Conclusion
60	Solder	Pb	BL	--	Pass
		Cd	BL	--	
		Hg	BL	--	
		Cr(Cr(VI))	BL	--	
		Br(PBBs&PBDEs)	/	/	
		Phthalate(DBP/BBP /DEHP/DIBP)	/	/	

**Remark:**

- (1) (a) It is the result on total Br while test item on restricted substances is PBBs/PBDEs. It is the result on total Cr while test item on restricted substances is Cr<sup>6+</sup>.  
 (b) Results are obtained by XRF for primary screening, and further chemical testing by ICP-OES (for Cd, Pb, Hg), UV-Vis (for Cr(VI)) and GC-MS (for PBBs, PBDEs) is recommended to be performed, if the concentration exceeds the below warning value according to IEC62321-3-1:2013 (unit: mg/kg).

Element	Polymers	Metals	Composite Material
Cd	$BL \leq (70-3\sigma) < X < (130+3\sigma) \leq OL$	$BL \leq (70-3\sigma) < X < (130+3\sigma) \leq OL$	$LOD < X < (150+3\sigma) \leq OL$
Pb	$BL \leq (700-3\sigma) < X < (1300+3\sigma) \leq OL$	$BL \leq (700-3\sigma) < X < (1300+3\sigma) \leq OL$	$BL \leq (500-3\sigma) < X < (1500+3\sigma) \leq OL$
Hg	$BL \leq (700-3\sigma) < X < (1300+3\sigma) \leq OL$	$BL \leq (700-3\sigma) < X < (1300+3\sigma) \leq OL$	$BL \leq (500-3\sigma) < X < (1500+3\sigma) \leq OL$
Cr	$BL \leq (700-3\sigma) < X$	$BL \leq (700-3\sigma) < X$	$BL \leq (500-3\sigma) < X$
Br	$BL \leq (300-3\sigma) < X$	NA	$BL \leq (250-3\sigma) < X$

(c) OL=Over Limit, BL=Below Limit, X=inconclusive, LOD=Limit of Detection, /=not applicable, -- = No Testing

(d) The XRF screening test for RoHS elements-The reading may be different to the actual content in the sample be of non-uniformity composition

(2) (a) mg/kg=ppm=0.0001%, N.D.=not detected (<MDL)

(b) Unit and Method Detection Limit(MDL) in wet chemical test

Test Items	Unit	MDL	Limit
Pb	mg/kg	2	1000
Cd	mg/kg	2	100
Hg	mg/kg	2	1000
Cr <sup>6+</sup>	mg/kg	See below	1000
PBBs	mg/kg	See below	1000
PBDEs	mg/kg	See below	1000
DBP	mg/kg	50	1000

## TEST REPORT

Report No.: MTi250815018-0106C1

BBP	mg/kg	50	1000
DEHP	mg/kg	50	1000
DIBP	mg/kg	50	1000

The MDL for single compound of PBBs & PBDEs is 20mg/kg, MDL of Cr<sup>6+</sup> for metal sample is 0.10µg/cm<sup>2</sup>. and MDL of Cr<sup>6+</sup> for polymer & composite sample is 8 mg/kg.

(c) Metal sample:

-The sample is positive for Cr<sup>6+</sup> if the Cr<sup>6+</sup> concentration is greater than 0.13 µg/cm<sup>2</sup>.

The sample coating is considered to contain Cr<sup>6+</sup>.

-The sample is negative for Cr<sup>6+</sup> if Cr<sup>6+</sup> is ND (concentration less than 0.10 µg/cm<sup>2</sup>).

The coating is considered a non- Cr<sup>6+</sup> based coating

-The result between 0.10 µg/cm<sup>2</sup> and 0.13 µg/cm<sup>2</sup> is considered to be inconclusive, unavoidable coating variations may influence the determination

Information on storage conditions and production date of the tested sample is unavailable and thus Cr<sup>6+</sup> results represent status of the sample at the time of testing.

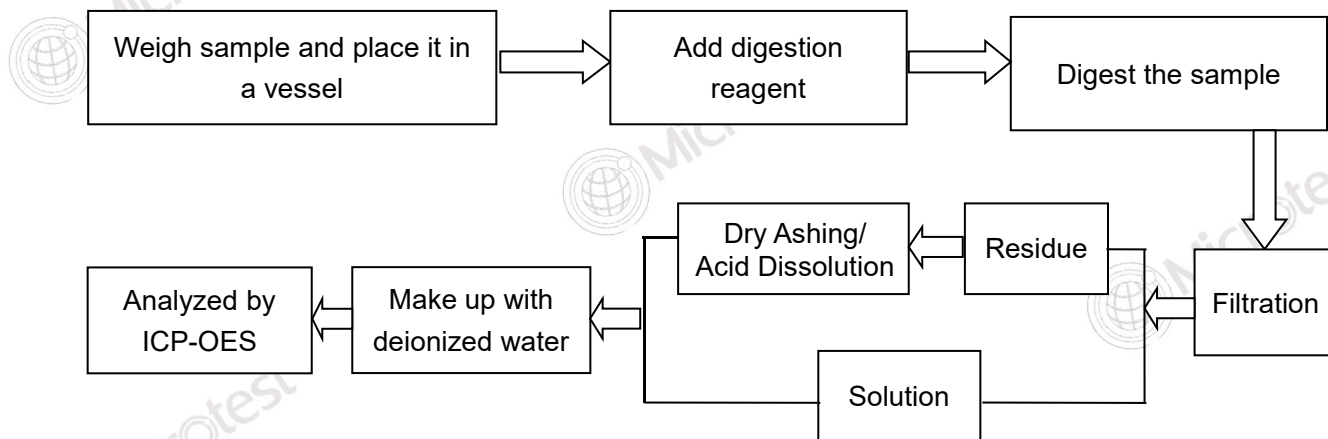
(3) As specified by client to test the specified materials only.

# TEST REPORT

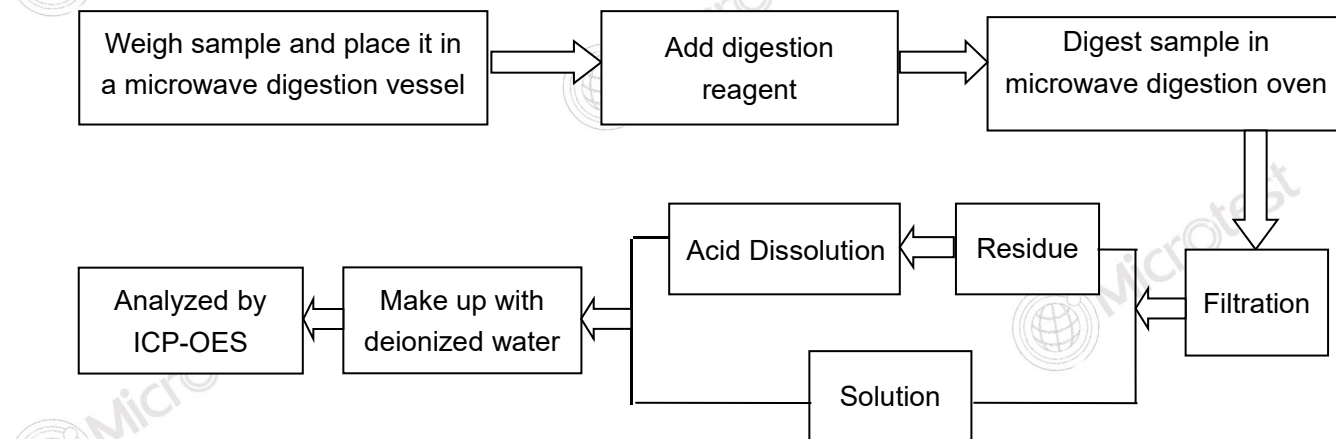
Report No.: MTI250815018-0106C1

## Testing flow chart:

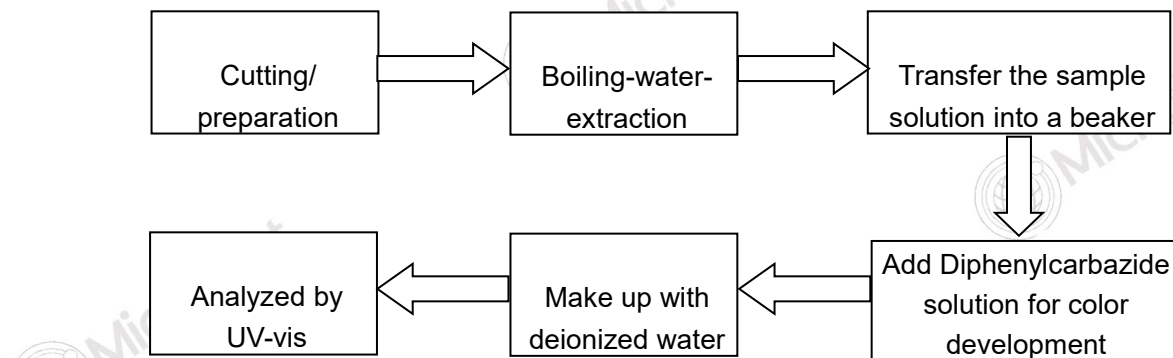
### 1. Lead, Cadmium



### 2. Mercury



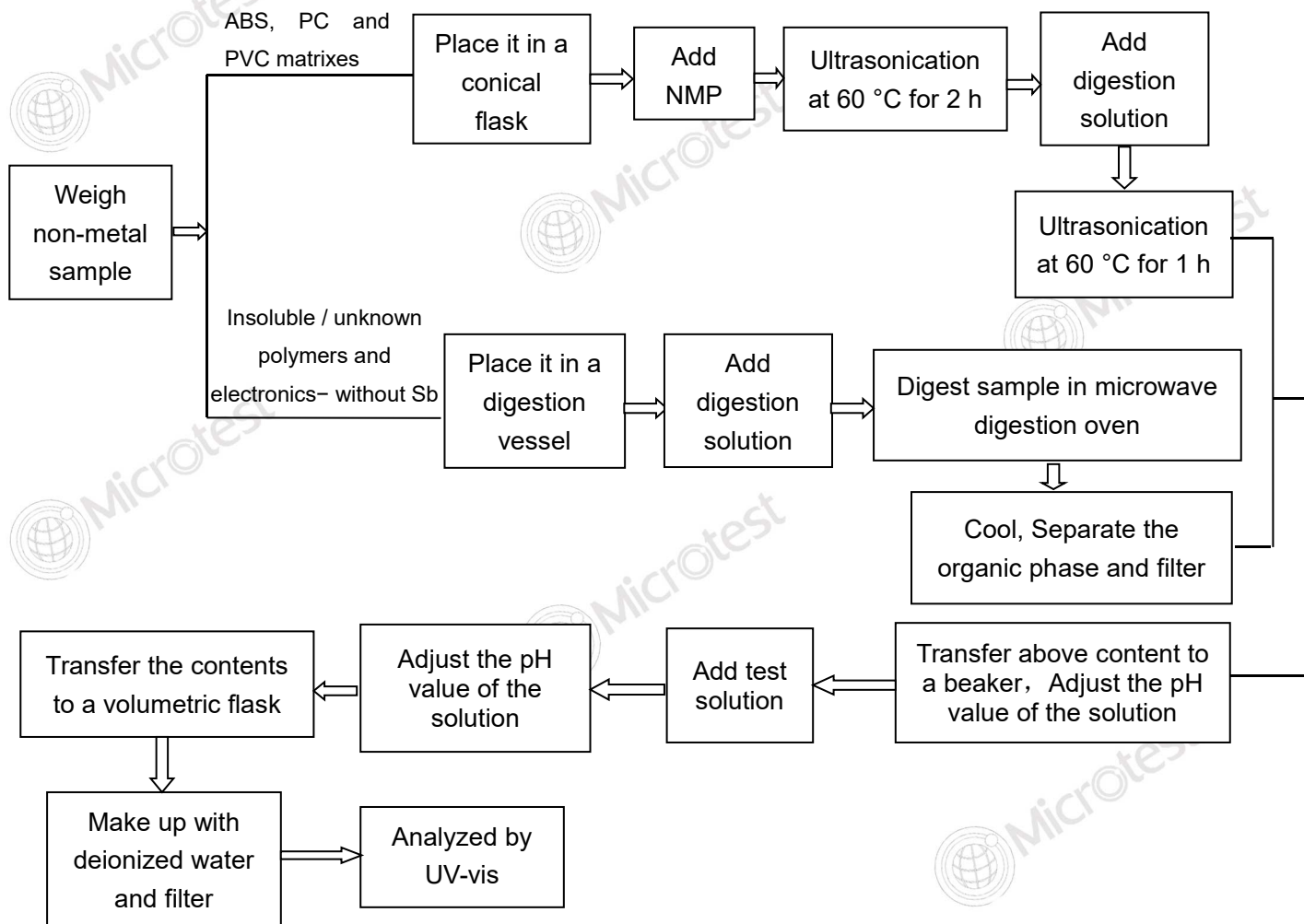
### 3. Hexavalent Chromium (For metal material)



# TEST REPORT

Report No.: MTI250815018-0106C1

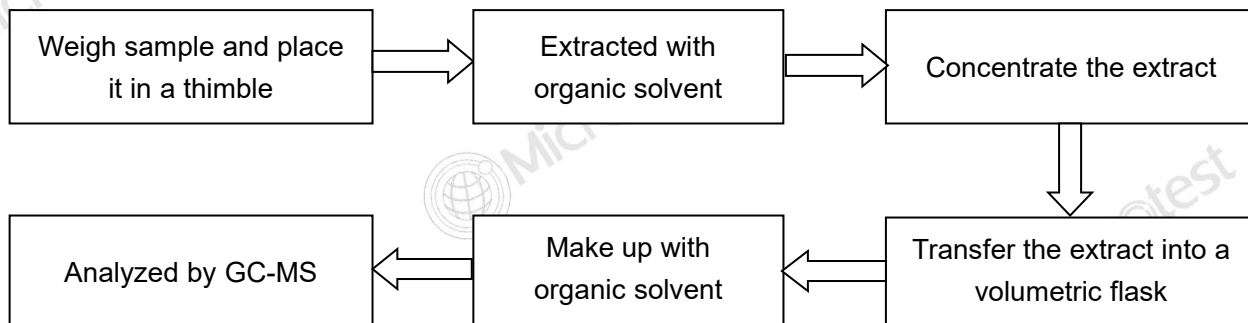
## 4. Hexavalent Chromium(For non-metal material):



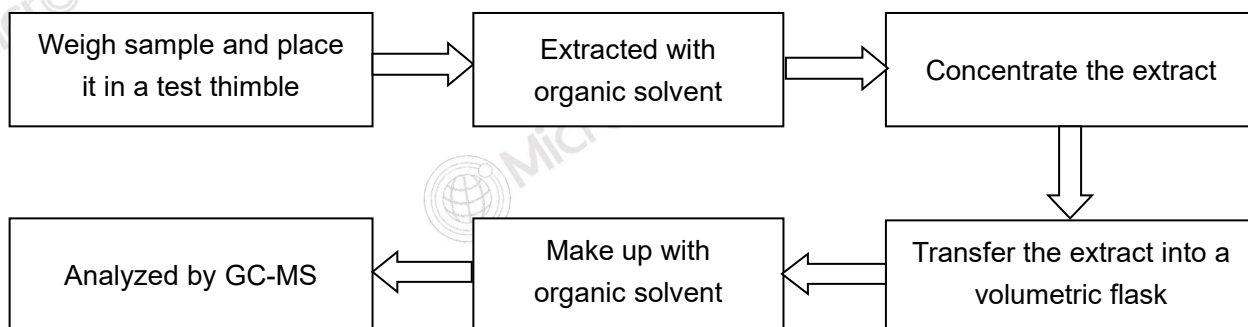
## TEST REPORT

Report No.: MTI250815018-0106C1

### 5. Polybromobiphenyls (PBBs), Polybromodiphenyl ethers (PBDEs)



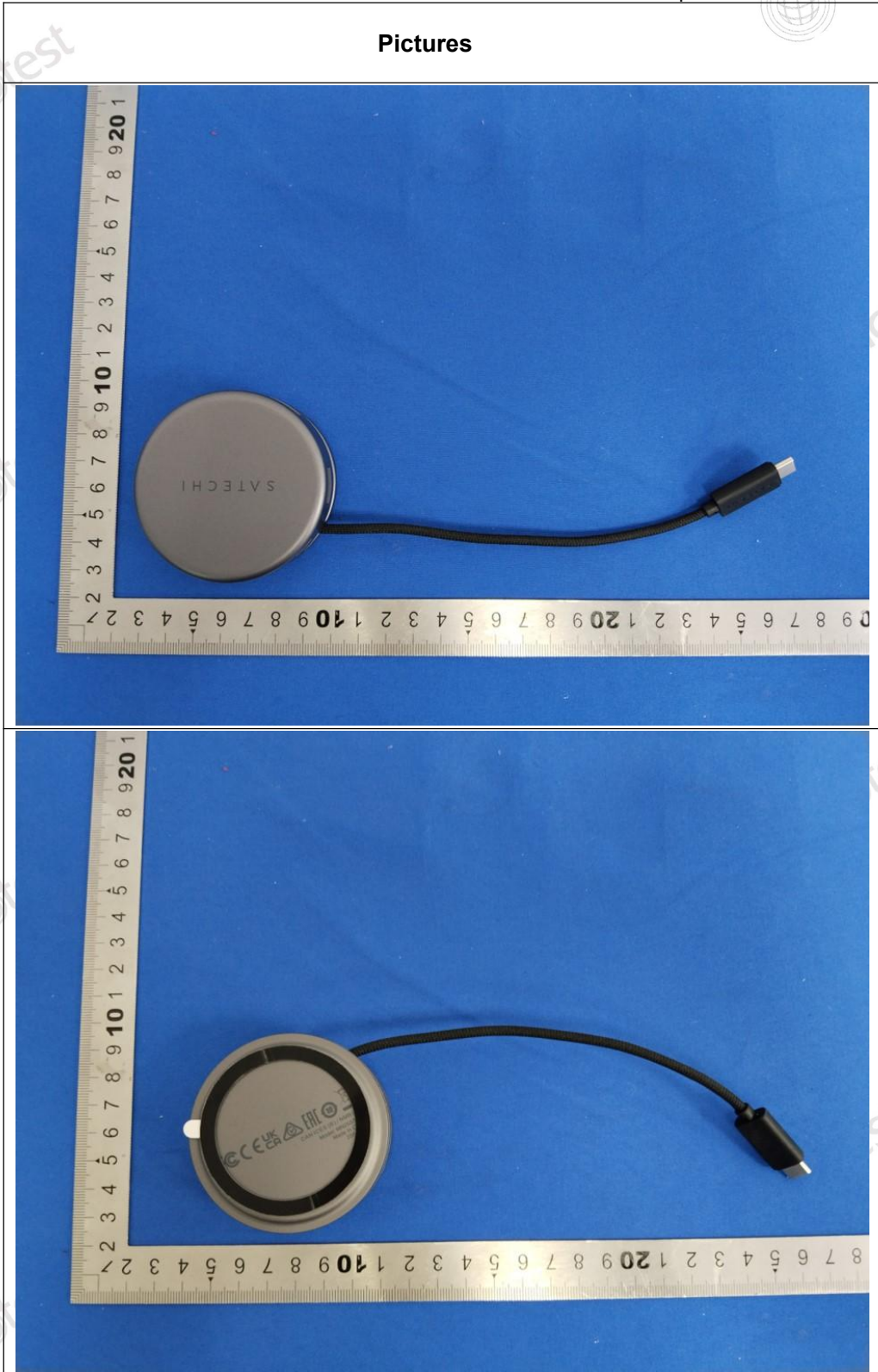
### 6. Phthalates(DBP, BBP, DEHP, DIBP)



# TEST REPORT

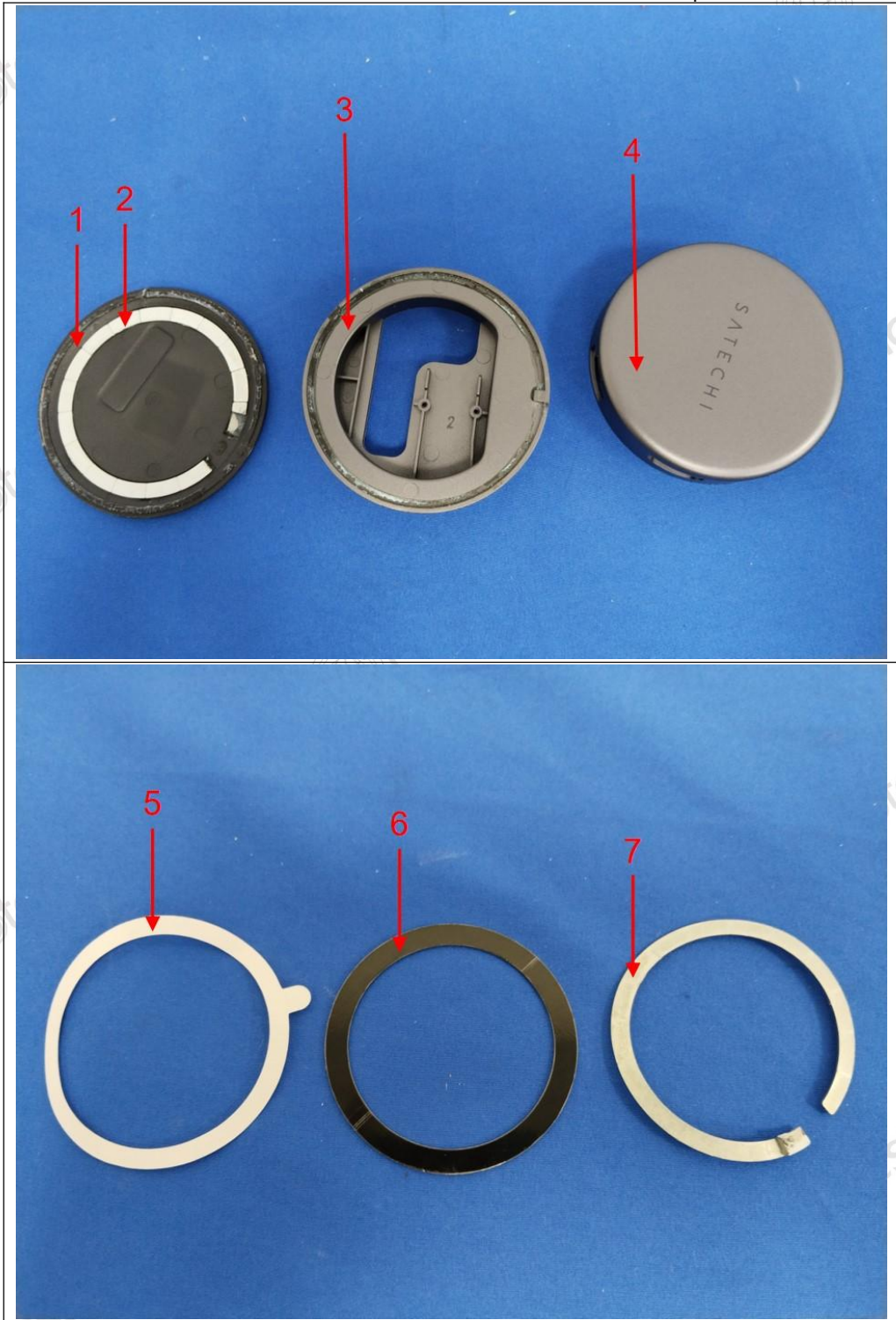
Report No.: MTi250815018-0106C1

## Pictures



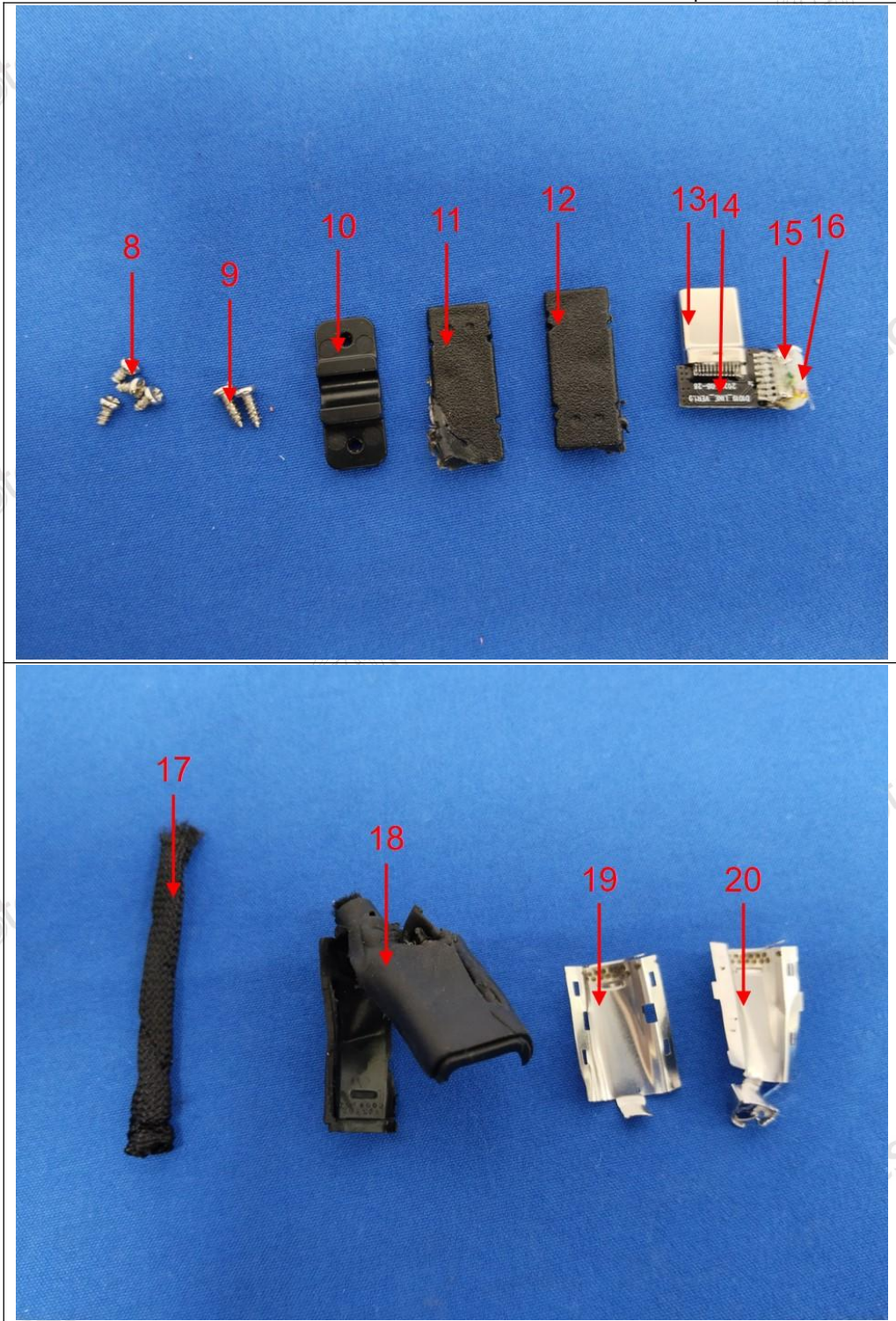
# TEST REPORT

Report No.: MTI250815018-0106C1



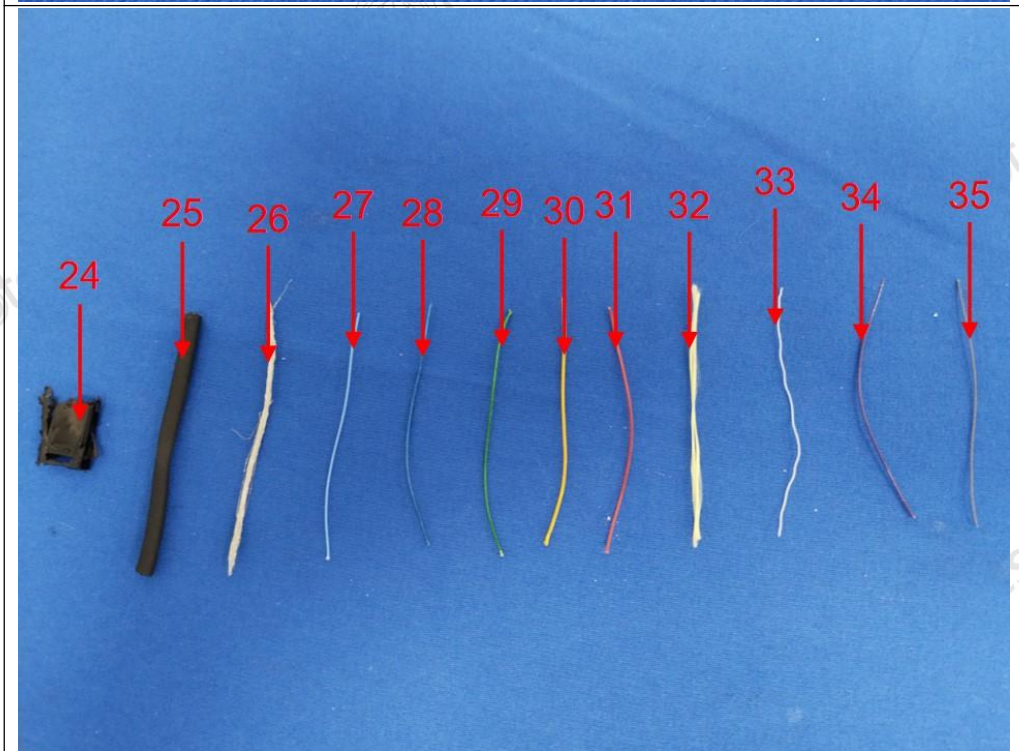
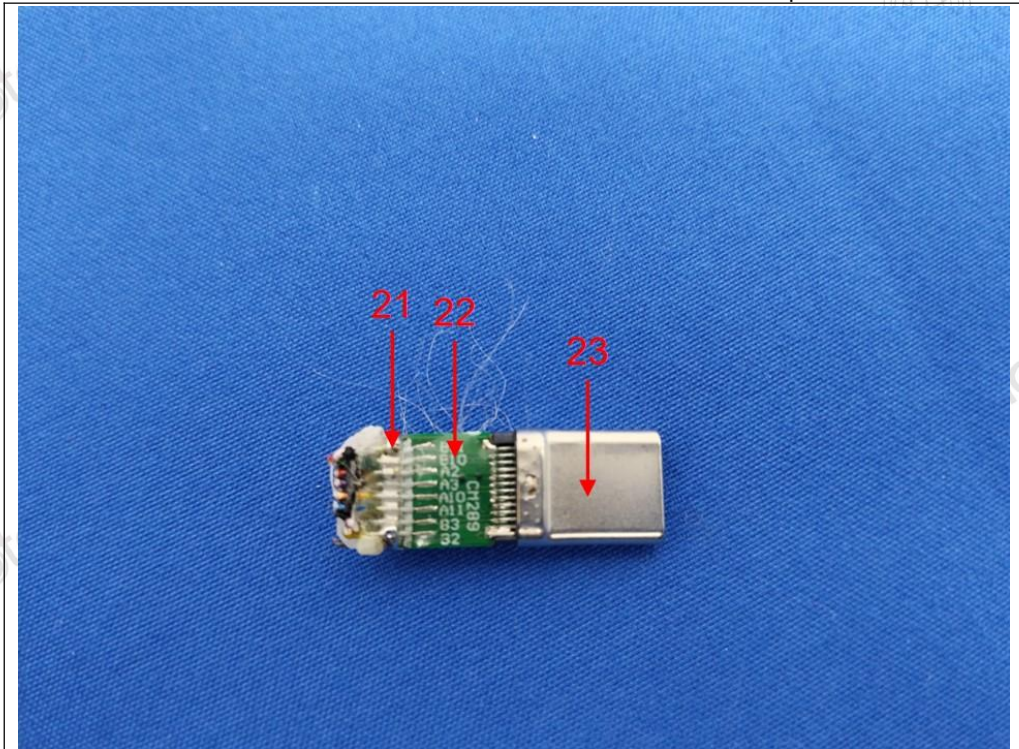
# TEST REPORT

Report No.: MTi250815018-0106C1



# TEST REPORT

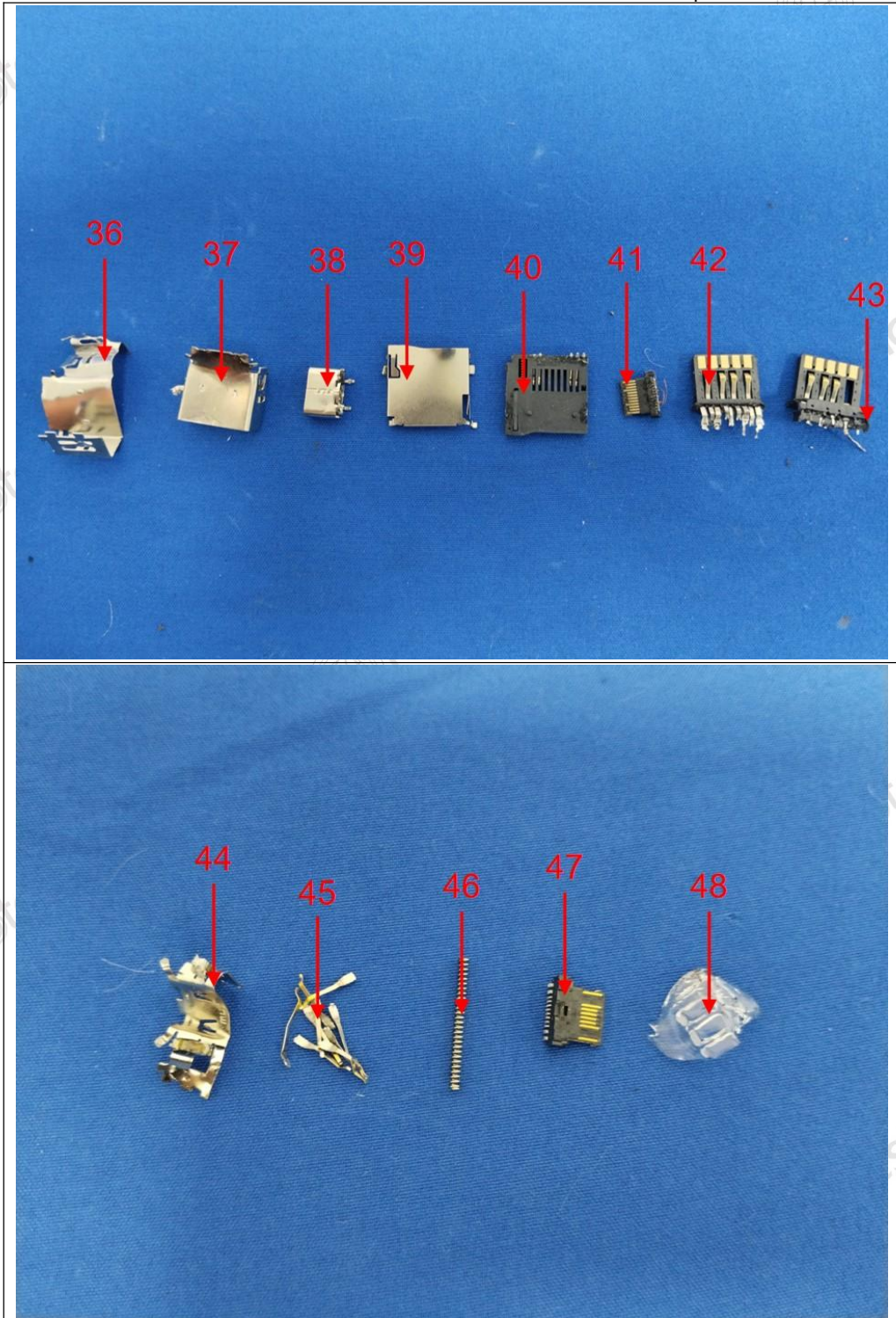
Report No.: MTi250815018-0106C1





# TEST REPORT

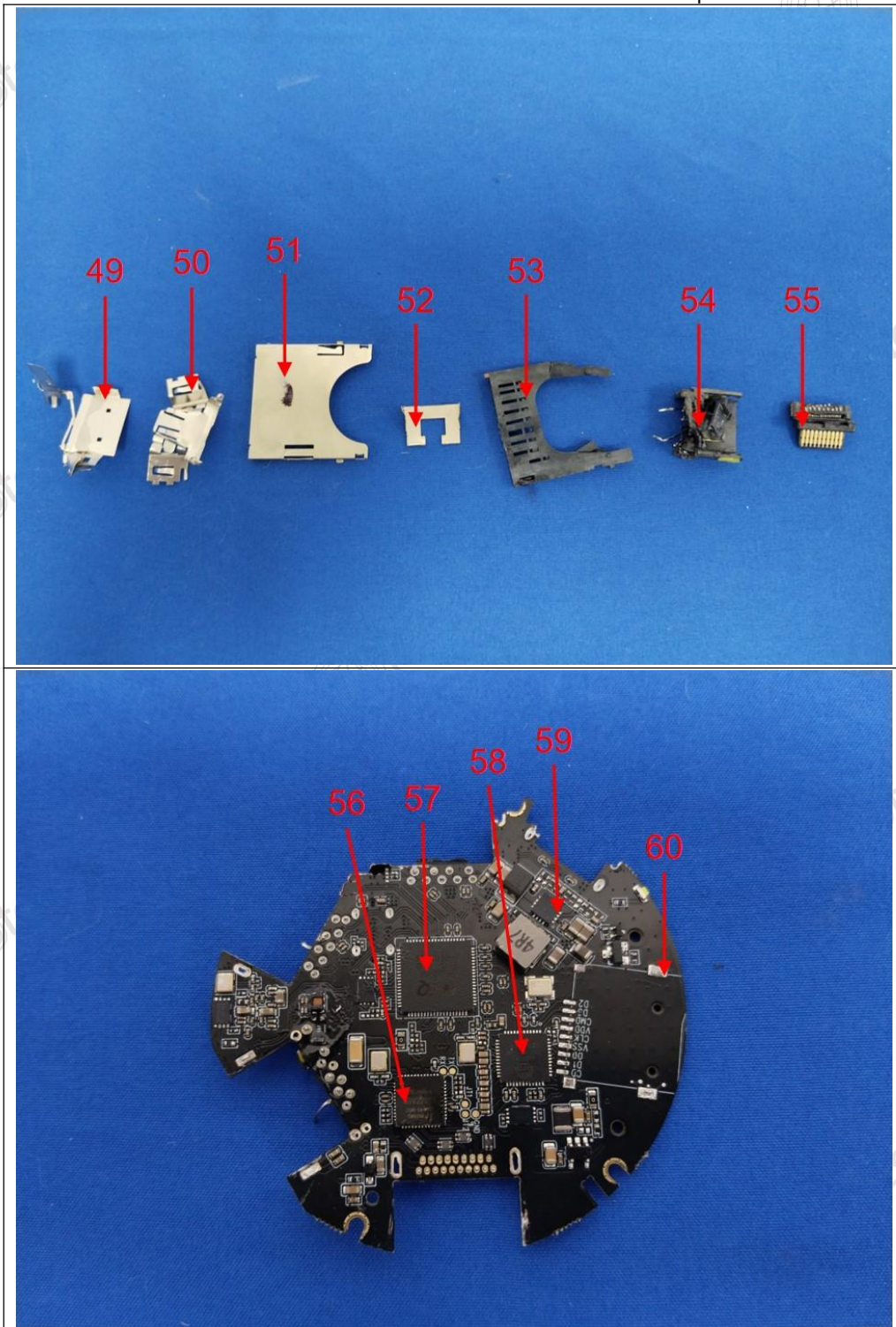
Report No.: MTi250815018-0106C1





# TEST REPORT

Report No.: MTI250815018-0106C1



## Statement

1. This report is invalid without the seal and signature of the laboratory.
2. The test results of this report are only responsible for the samples submitted. Client shall be responsible for representativeness of the sample and authenticity of the material.
3. The report shall not be partially reproduced without the written consent of the Laboratory.
4. This report is invalid if transferred, altered or tampered with in any form without authorization.
5. The observations or tests with special mark fall outside the scope of accreditation, and are only used for purpose of commission, research, training, internal quality control etc.
6. Any objection to this report shall be submitted to the laboratory within 15 days from the date of receipt of the report.

\*\*\*\*\* END OF REPORT \*\*\*\*\*