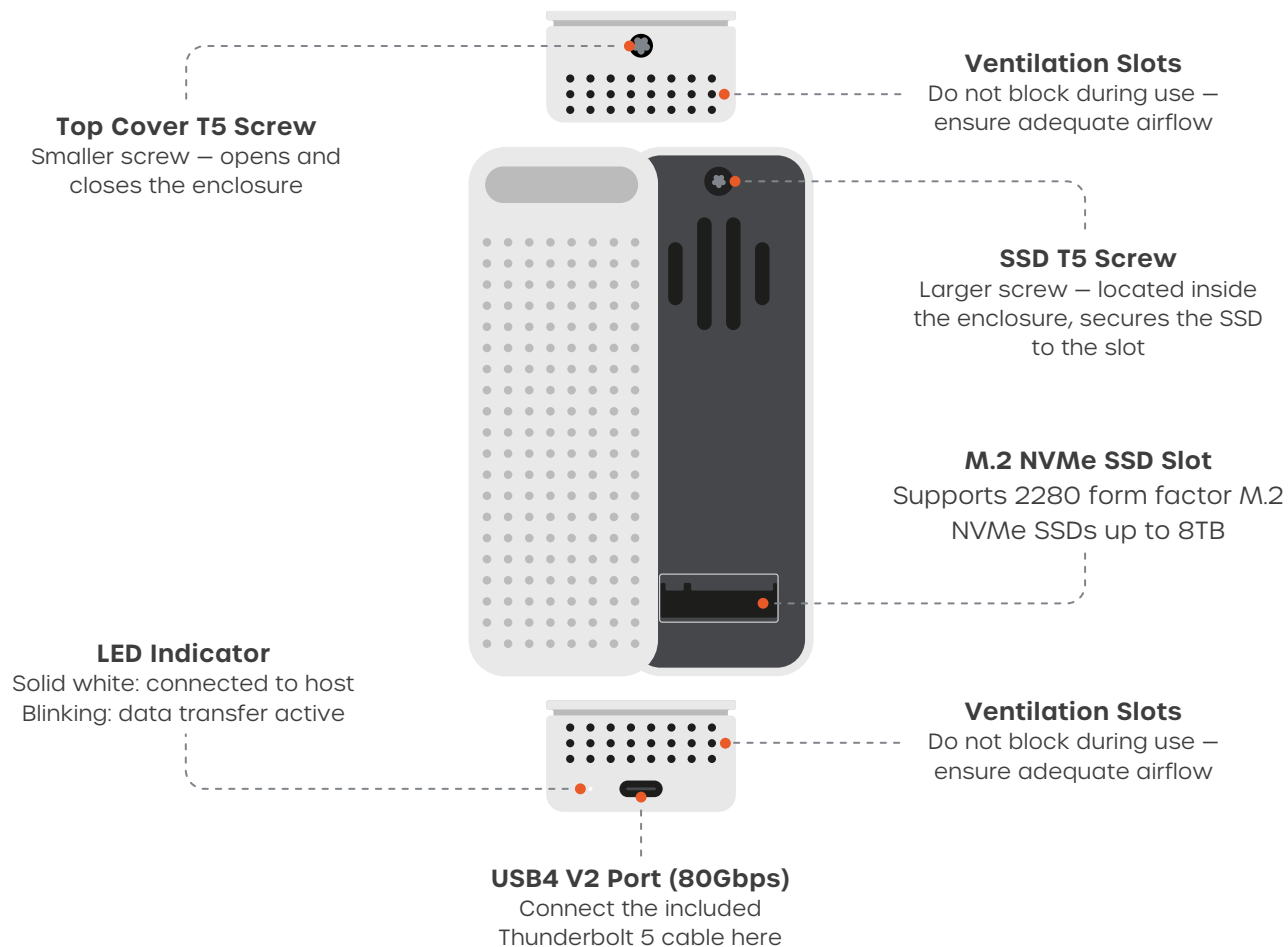


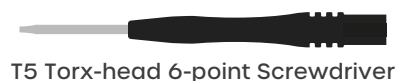
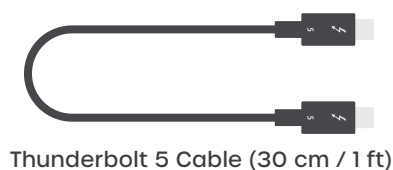
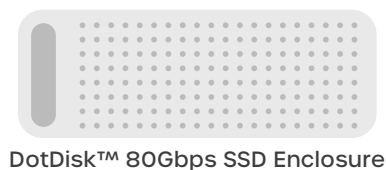
DotDisk™ 80Gbps SSD Enclosure

SKU: ST-EDD80C / ST-EDD80S

Overview



What's Included



2 × T5 SSD Screws (Larger)



2 × T5 Top Cover Screws (Smaller)

Know Your Screws



**SSD Screw
(larger)**

Pre-installed inside the enclosure. Holds the SSD down against the M.2 slot.



**Top Cover Screw
(smaller)**

Attached to the top cover. Opens and secures the enclosure lid.

Before You Begin

- Ensure you have a compatible NVMe M.2 SSD*.
- Work on a clean, static-free surface.
- Handle the SSD by its edges to avoid static damage.



1

A Unscrew



B Lift

Open the Enclosure

- Use the included screwdriver to remove the Top Cover Screw (smaller) from the top of the enclosure.
- Carefully lift the top cover off and set it aside.

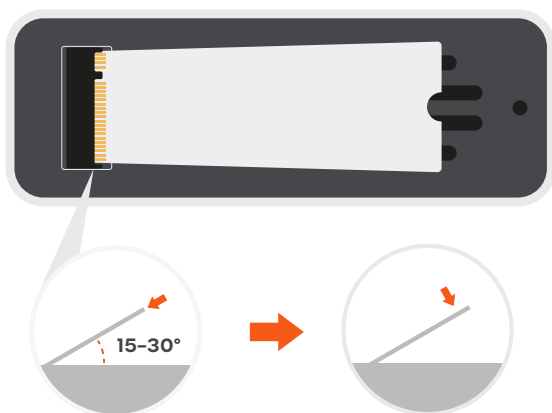
2



Locate the M.2 Slot

- Identify the M.2 connector inside the open enclosure.
- Locate the SSD Screw (larger) hole at the far end of the slot – this will be used in Step 4.

3

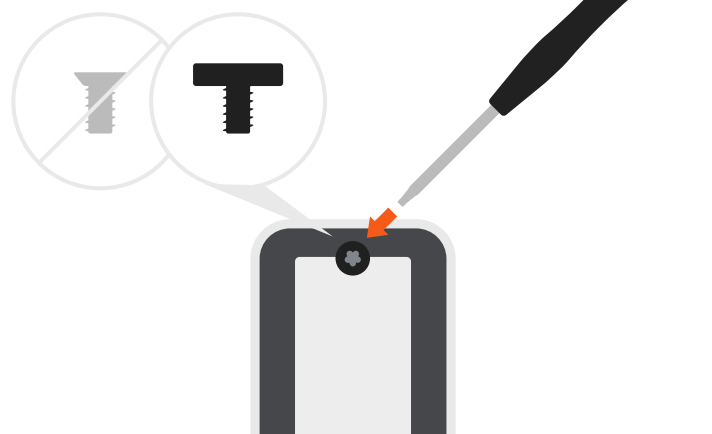


Insert the SSD

- Align the SSD's gold connector edge with the M.2 slot.
- Insert the SSD at a 15 to 30 degree angle, pressing gently until the contacts are fully seated in the connector.
- Then press the SSD down flat against the enclosure body.

4

Use LARGER screw



Secure the SSD

- Secure with the SSD Screw. Fasten the SSD Screw (larger) into the screw hole to hold the SSD flat against the slot.
- Do not overtighten.

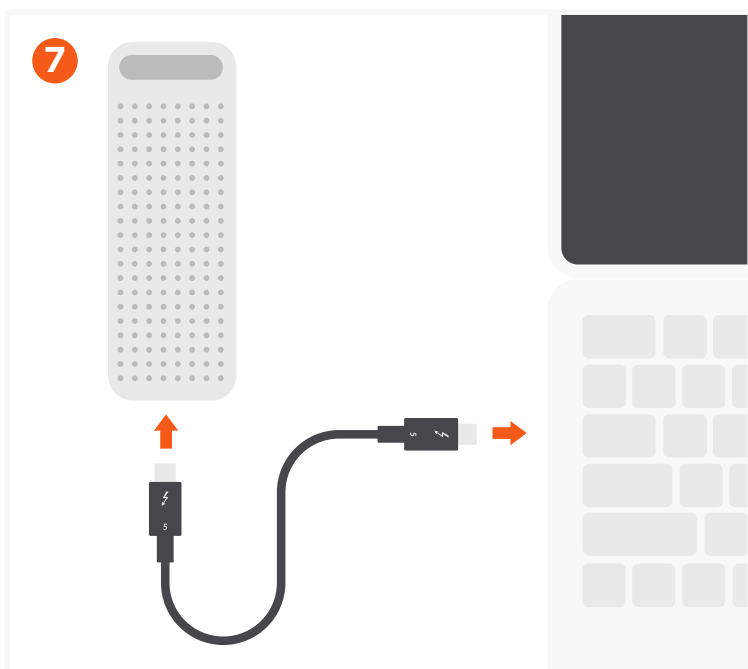
* Compatible only with 2280 M.2 NVMe SSDs up to 8TB.

Not compatible with SATA SSDs, 2230/2242/2260 sizes, or SSDs with pre-installed heatsinks.



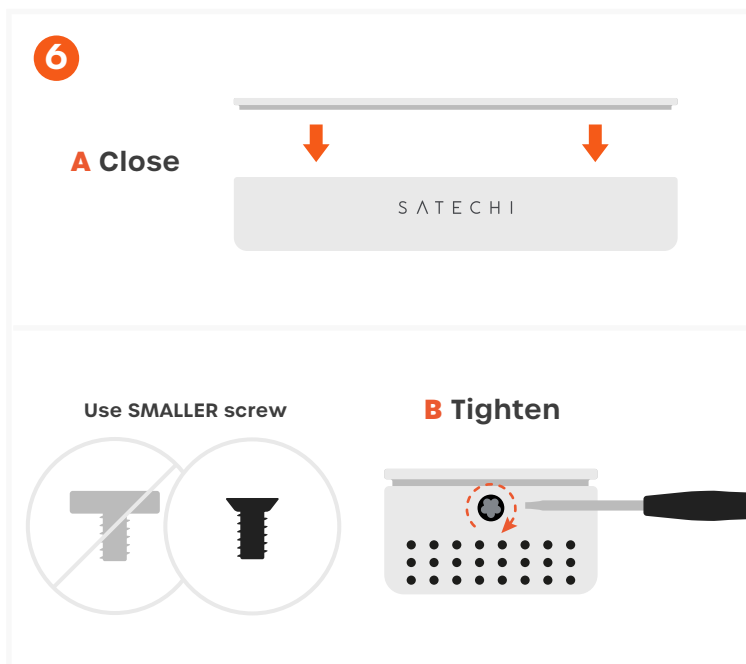
Apply the Thermal Pad

- Peel the plastic film from the thermal pad.
- Press it firmly onto the top surface of the SSD.



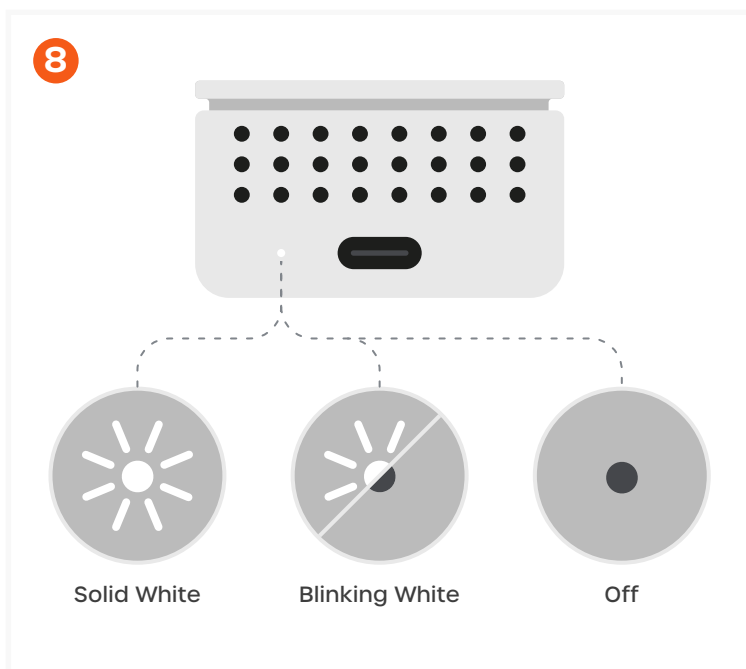
Connect and Format Your SSD

- Connect the included Thunderbolt 5 cable to the USB4 V2 port on the DotDisk & plug the other end into a Thunderbolt 5, USB4, or USB-C port on your host device.
- The LED will light up solid white once the enclosure is recognized by the host device.
- Format the drive: Open **Disk Utility (Mac)** or **Disk Management (Windows)** and format the SSD before first use.



Close the Enclosure

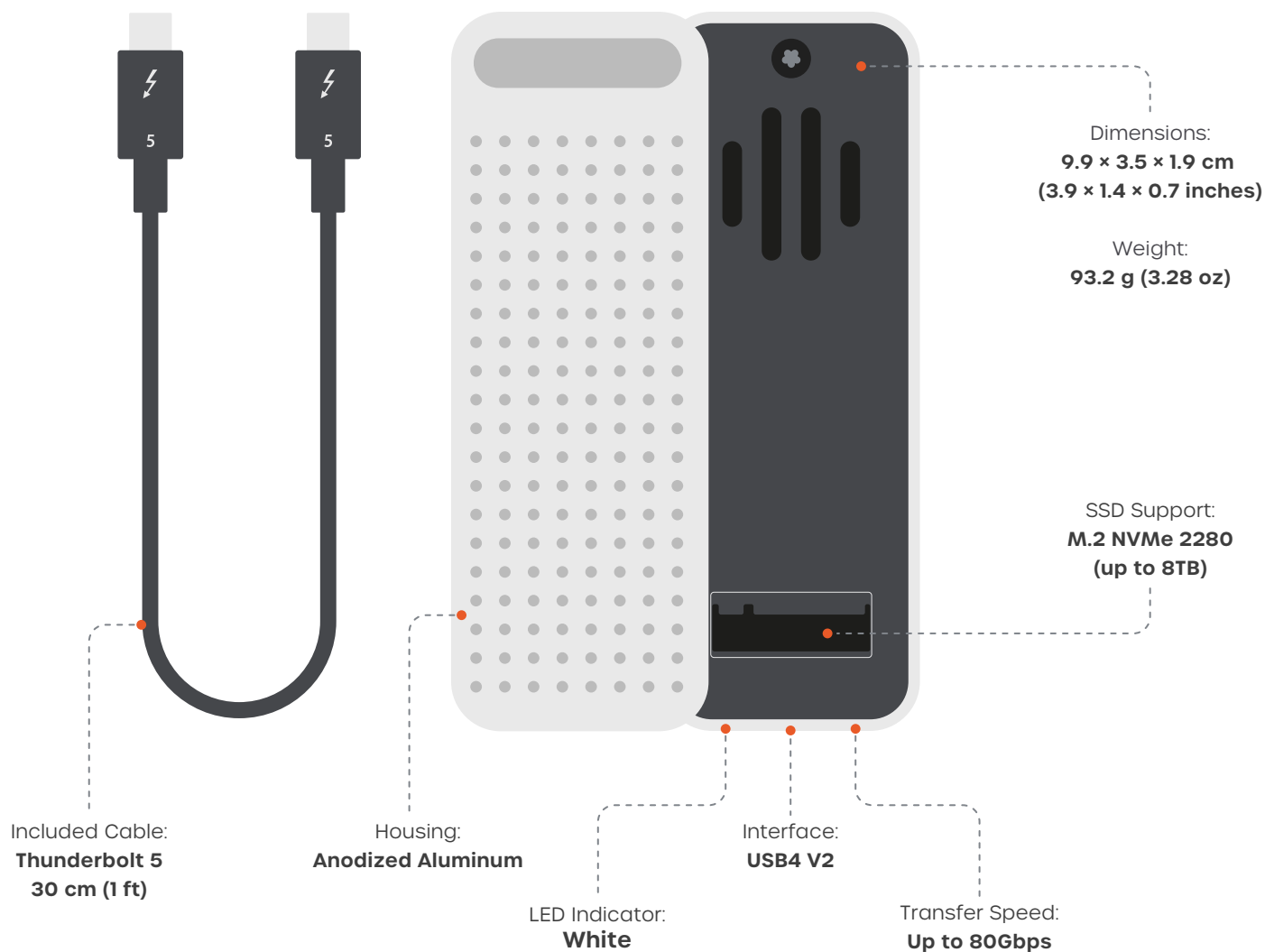
- A** Place the top cover back onto the enclosure, ensuring all edges are properly aligned.
- B** Tighten the Top Cover Screw (smaller) until snug. Do not overtighten.



Check Status Using LED Indicator

- **Solid White:** The enclosure is connected to the host device and ready.
- **Blinking White:** Data transfer is in progress.
- **Off:** No host device detected, or the enclosure has been safely ejected.

Specifications



Compatibility

- Best performance: Use the included Thunderbolt 5 cable for full 80Gbps transfer speeds.
- Downward compatible with Thunderbolt 4, USB4, and USB-C devices. Transfer speeds vary depending on host device capabilities.
- Longer cables: If a longer cable is needed, ensure it is rated for 80Gbps speeds.

Certifications & Safety

FCC Class B



CE Certified



ICES(B)/NMB(B)



WEEE

