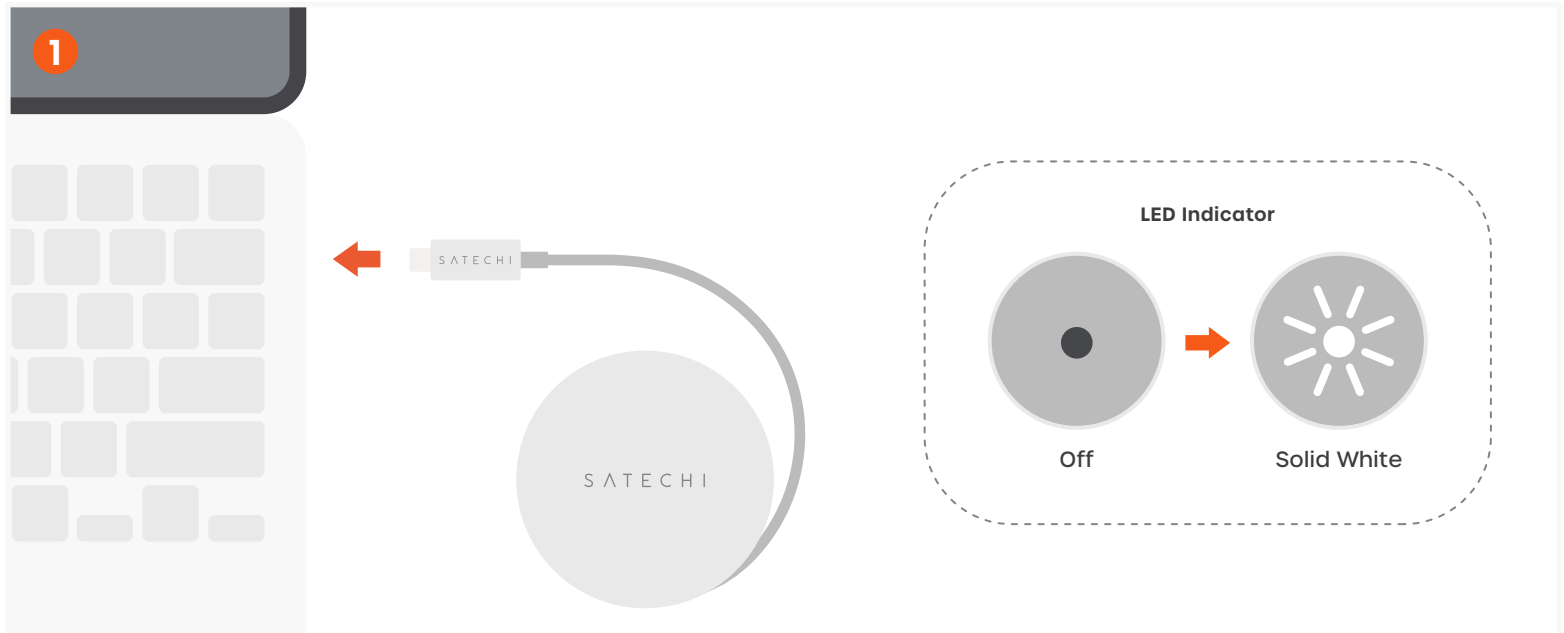


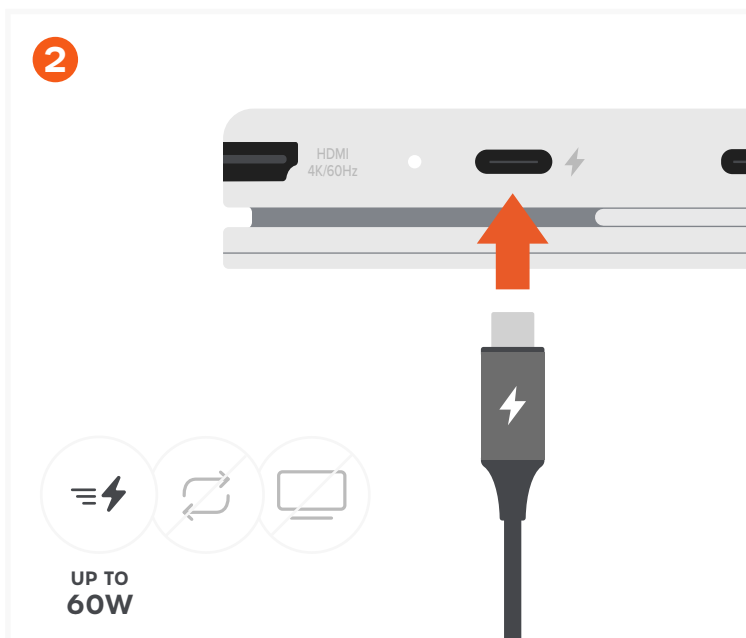
OntheGo™ 5-in-1 Multiport Adapter

SKU: ST-POTG5S / ST-POTG5P / ST-POTG5B / ST-POTG5Y



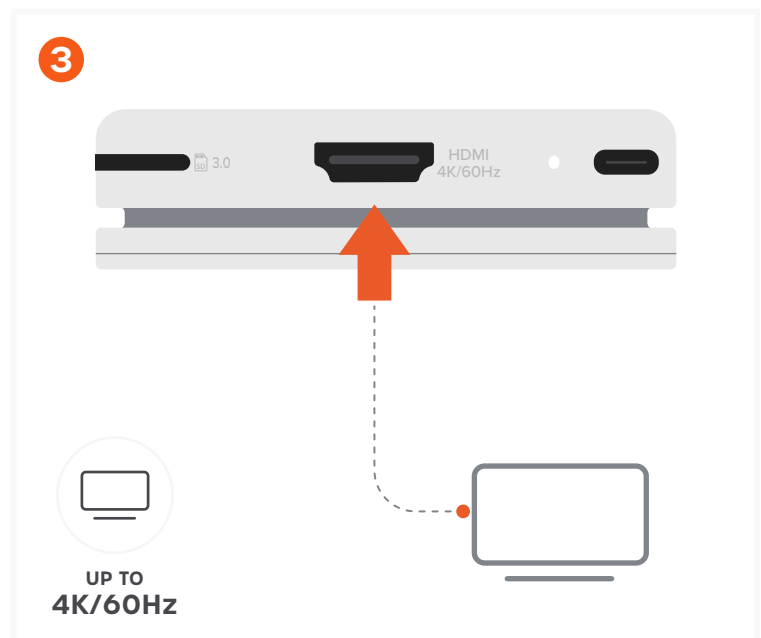
Connect the Adapter to Your Host Device

- Plug the built-in braided USB-C cable into a USB-C port on your host device.
- The white LED indicator will turn on, confirming the adapter is connected and powered.



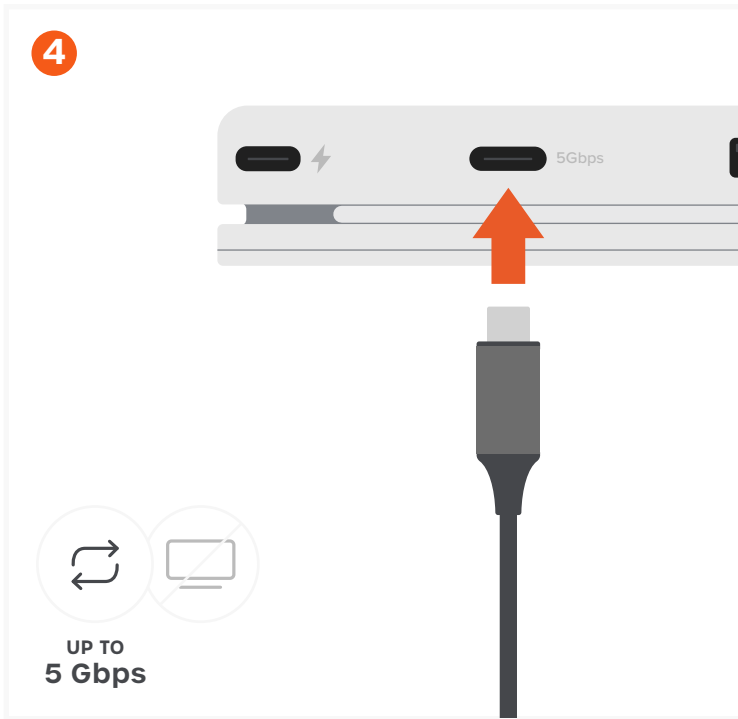
Charge Your Host Device via USB-C PD (Up to 60W)

- Connect a USB-C charging cable to the USB-C PD port to charge your host device while using the adapter.
- Supports up to 60W input.
- The USB-C PD port does not support data transfers or video output.
- Not compatible with CD/DVD drives or the Apple USB SuperDrive.



Connect an External Display via HDMI (Up to 4K/60Hz)

- Connect an HDMI cable from the adapter to a 4K HDMI-equipped display.
- Supports video output up to 4K at 60Hz.
- Only supports direct HDMI connections.



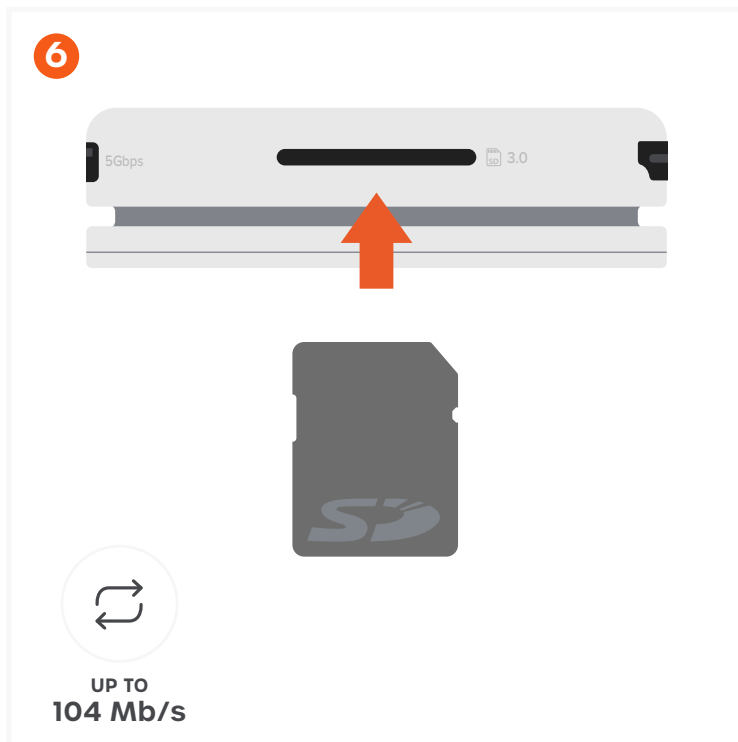
Connect USB-C Devices (Up to 5Gbps)

- Connect a USB-C device to the USB-C data port for high-speed data transfers at up to 5Gbps.
- This port does not support video output.



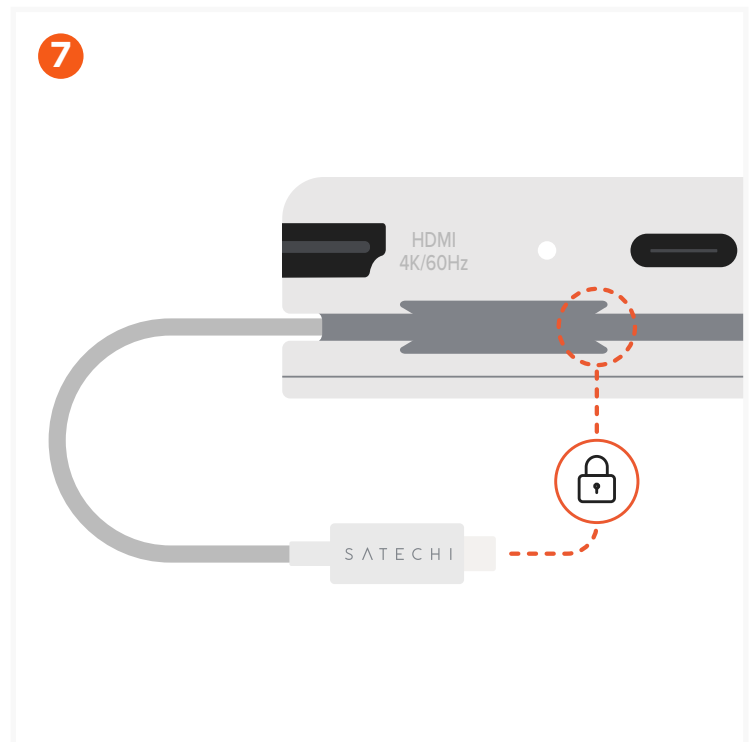
Connect USB-A Devices (Up to 5Gbps)

- Connect a USB-A peripheral or storage device for data transfer at up to 5Gbps.
- Not compatible with Apple USB SuperDrive, CD readers, or DVD drives.



Insert an SD Card (Up to 104MB/s)

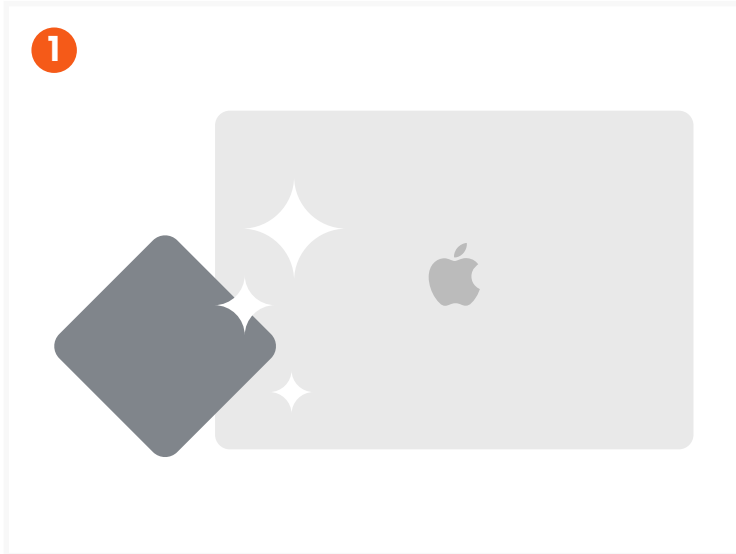
- Insert with pins facing down, label facing up. Inserting incorrectly may damage the card or reader.
- Supports UHS-I read/write speeds of up to 104MB/s.



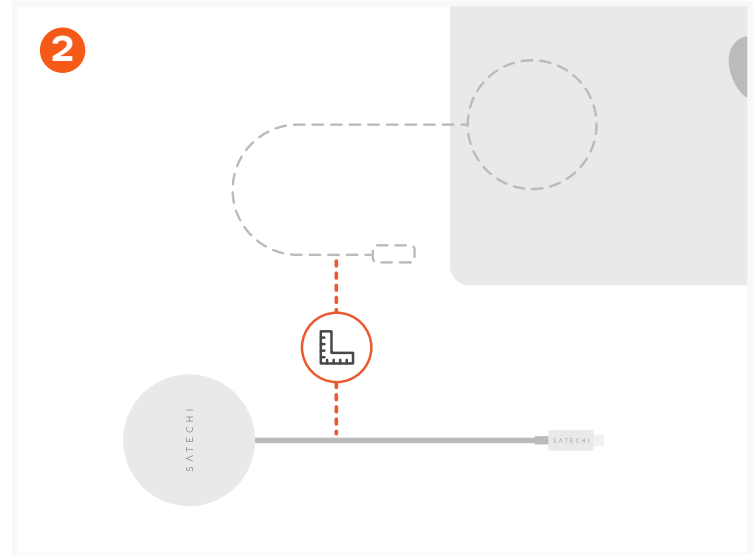
Wrap & Secure the Cable for Travel

- Coil the built-in USB-C cable into the bottom groove of the adapter, following the circular path.
- Push the USB-C connector into the designated clips to lock it in place.
- Ensure the cable sits flush and the connector is firmly held to prevent it from coming loose during travel.

Mount with the 3M Adhesive Ring (Optional)

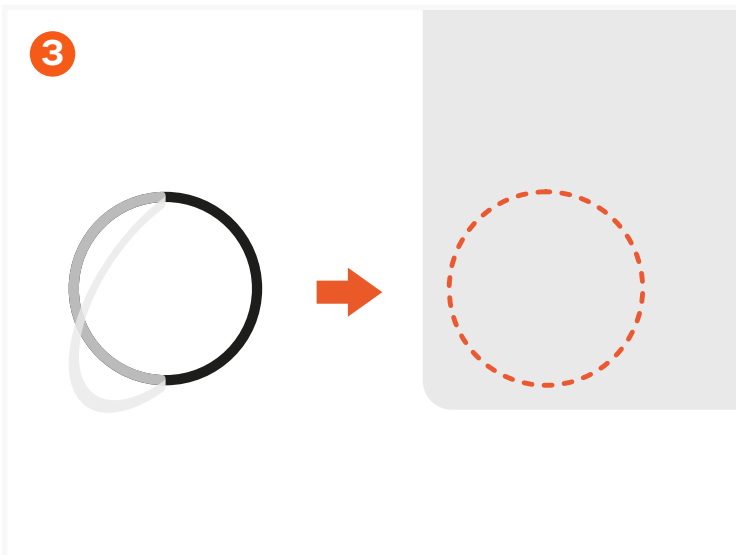


Clean the surface where you'll place the 3M Adhesive Ring.

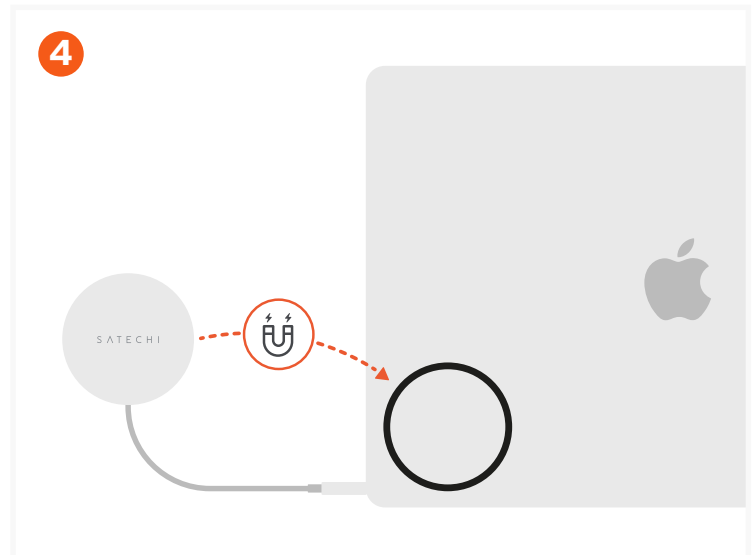


Check that the built-in USB-C cable comfortably reaches your device's port. Adjust placement if needed.

Permanent – plan placement before applying.



Remove the protective film from the 3M Adhesive Ring to expose the adhesive and press the ring firmly onto a clean, flat surface. Avoid curved or textured areas.



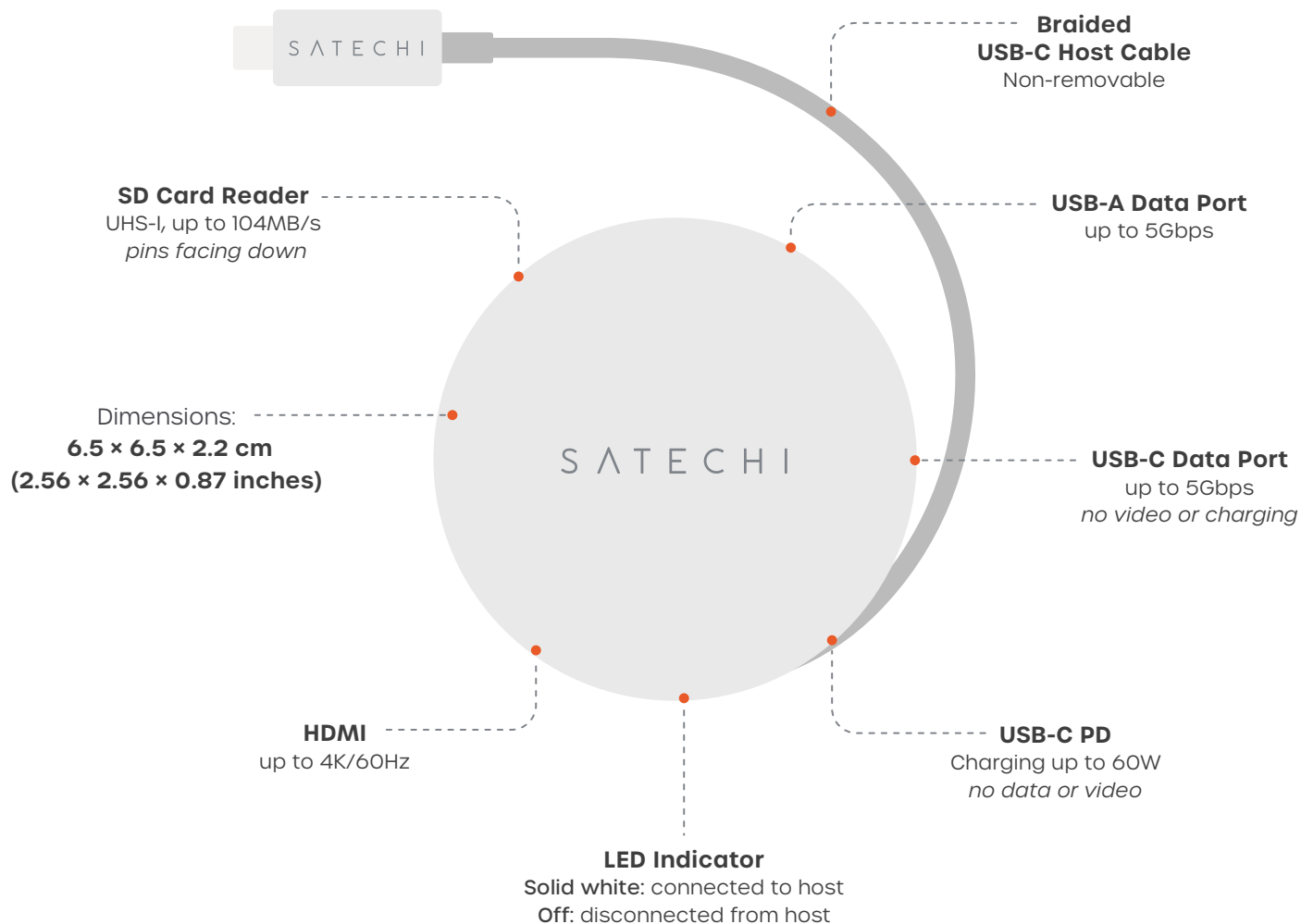
Attach the OntheGo 5-in-1 Adapter to the ring and connect your devices.

Magnetic base does not provide wireless charging.

Important Notes

- USB-C ports (data and PD) do not support video output.
- Not compatible with Apple USB SuperDrive, CD readers, or DVD drives.
- SD card orientation: Insert with pins facing down, label facing up.
- The magnetic base does not provide wireless charging.
- Keep away from water, liquids, and moisture.
- For best performance, connect to a USB-C port that supports USB 3.2 Gen 1 (5Gbps) or higher.

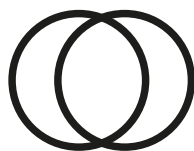
Specifications



What's Included:



OntheGo™ 5-in-1
Multiport Adapter



2 × 3M Adhesive Rings

Available Colors:



Citrus
ST-POTG5Y



Blush
ST-POTG5P



Indigo
ST-POTG5B



Silver
ST-POTG5S

Certifications & Safety

FCC Class B



CE Certified



CAN ICES(B)/NMB(B)



WEEE

