

# Dimensions: 65mm x 110mm

## OUTSIDE

- Die Übertragungsgeschwindigkeiten können je nach Host-Gerät und SD-Kartenfunktionen variieren.
- Le velocità di trasferimento possono variare a seconda del dispositivo host e delle capacità della scheda SD.
- Aktarım hızları, host cihazı ve SD kart özelliklerine bağlı olarak değişebilir.
- Prędkości transferu mogą się różnić w zależności od urządzenia hosta i możliwości karty SD.
- As velocidades de transferência podem variar dependendo dos recursos do dispositivo host e do cartão SD.
- Скорость передачи может варьироваться в зависимости от host-устройства и возможностей SD-карты.
- 転送速度は、ホスト デバイスと SD カードの機能によって異なる場合があります。
- 전송 속도는 host 장치 및 SD 카드 기능에 따라 다를 수 있습니다.
- 傳輸速度可能因主機設備和 SD 卡功能而異。
- 传输速度可能因主机设备和 SD 卡功能而异。



This device complies with part 15 of the FCC results. Operation is subject to the following two conditions:  
 1. This device may not cause harmful interference and  
 2. This device must accept any interference received, including interference that may cause undesired operation.  
**Note:** This Equipment has been tested and found to comply with the limits for a class B digital device, pursuant to Part 15 of the Federal Communications Commission (FCC) rules. These limits are designed to provide reasonable protection against harmful interference in a residential installation. This equipment generates, uses, and can radiate radio frequency energy and, if not installed and used in accordance with the instructions, may cause harmful interference to radio communications. However, there is no guarantee that interference will not occur in a particular installation. If this equipment does cause harmful interference to radio or television reception, which can be determined by turning the equipment off and on, the user is encouraged to try to correct the interference by one or more of the following measures:  
 1.1. Reorient or relocate the receiving antenna  
 1.2. Increase the separation between the equipment and receiver  
 1.3. Connect the equipment into an outlet on a circuit different from that to which the receiver is connected  
 1.4. Consult the dealer or an experienced radio/TV technician for help  
 Changes or modifications not expressly approved by the manufacturer could void the user's authority to operate the equipment.



Satechi declares that this product is in compliance with the essential requirements and other relevant provisions of applicable EC directives. For Europe, a copy of the Declaration of Conformity for this product may be obtained by visiting <https://satechi.net/support/doc>  
**CAN ICES-003 (B)/NMB-003(B)**  
 This Class B digital apparatus complies with Canadian ICES-003.  
 (Cet appareil numérique de la Classe B conforme à la norme NMB-003 du Canada).

### NEED HELP?

BESOIN D'AIDE? | ¿NECESITA AYUDA? | BENÖTIGEN SIE HILFE? | HAI BISOGNO DI AIUTO? | YARDIMA MI İHTİYACINIZ VAR? | POTRZEBUJĘ POMOCY? | PRECISA DE AJUDA? | НУЖНА ПОМОЩЬ? | 助けが必要ですか? | 도움이 필요하십니까? | 需要幫助? | 需要帮助?

Manufacturer:  
 7365 Mission Gorge Rd. Ste. G  
 San Diego, CA 92120, USA  
 +1 858 268 1800  
[support@satechi.com](mailto:support@satechi.com)  
[www.satechi.net](http://www.satechi.net)

EU Authorized Representative:  
 Chemical Inspection and Regulation  
 Service Limited  
 CIRS, Regus Harcourt Centre  
 Dublin, Ireland, D02 HW77  
 +353 1 477 3710

UK Representative:  
 Chemical Inspection and Regulation  
 Service UK Ltd.  
 Unit 536, Salisbury House  
 London Wall, London, EC2M 5SQ  
 +44 20 3289 6395

## S A T E C H I

### TYPE-C UHS-II CARD READER ADAPTER

#### USER MANUAL

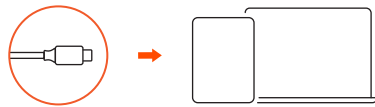


Manuel de l'utilisateur | Manual de usuario | Benutzerhandbuch | Manuale utente | Kullanım kılavuzu | Instrukcja obsługi | Manual de usuário | Руководство пользователя | ユーザーマニュアル | 사용자 매뉴얼 | 使用者説明 | 用户说明

## INSIDE

### PLUG & PLAY

BRANCHEZ & JOUEZ | CONECTAR Y USAR | STECKEN & SPIELEN | COLLEGARE E GIOCARRE | TAK VE ÇALIŞTIR | PODŁĄCZ I UŻYWAJ | CONECTE E USE | ПОДКЛЮЧИ И РАБОТАЙ | プラグ&プレイ | 플러그 앤 플레이 | 即插即用 | 即插即用



### 1. Connect to a laptop or tablet

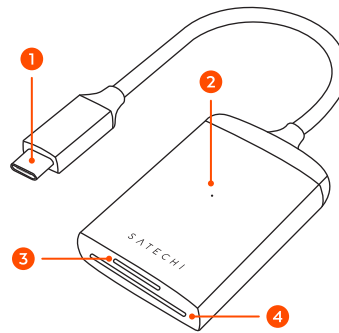
Connectez-vous à un ordinateur portable ou une tablette | Conecte a una computadora portátil o tableta | Mit einem Laptop oder Tablet verbinden | Collega a un laptop o tablet | Bir dizüstü bilgisayara veya tablete bağlanın | Podłącz do laptopa lub tabletu | Conecte-se a um laptop ou tablet | Подключите к ноутбуку или планшету | ノートパソコンかタブレットに接続 | 노트북 또는 태블릿에 연결 | 连接到筆記型電腦或平板電腦 | 连接到笔记本电脑或者平板电脑

### 2. Insert card into card reader

Insérer la carte dans le lecteur de carte | Inserte la tarjeta en el lector de tarjetas | Karte in Kartenleser einführen | Inserire la carta nel lettore di carte | Kartı kart okuyucuya takın | Włóż kartę do czytnika kart | Insira o cartão no leitor de cartão | Вставьте карту в картридер | カードリーダーにカードを挿入 | 카드 리더기에 카드 삽입 | 將卡插入讀卡器 | 將卡插入讀卡器

### FUNCTIONS

FONCTIONS | FUNCIONES | FUNKTIONEN | FUNZIONI | FONKSİYONLAR | FUNKCJE | FUNÇÕES | ФУНКЦИИ | 機能 | 기능 | 功能 | 功能



### 1. USB-C Connector

Connecteur USB-C | Conector USB-C | USB-C-Anschluss | Connettore USB-C | USB-C Konektörü | Złącze USB-C | Conector USB-C | Разъем USB-C | USB-C コネクタ | USB-C 커넥터 | USB-C連接器 | USB-C连接器

### 2. LED Indicator

Indicateur LED | Indicador LED | LED-Anzeige | Indicatore LED | LED Göstergesi | Wskaźnik LED | Indicador LED | Светодиодный Индикатор | LED ンジゲータ | LED 표시등 | LED指示燈 | LED指示灯

### 3. Micro SD Card Reader

Lecteur de Cartes Micro SD | Lector de Tarjetas Micro SD | Micro-SD-Kartenleser | Lettore Schede Micro SD | Micro SD Kart Okuyucu | Czytnik Kart Micro SD | Leitor de Cartões Micro SD | Картридер Для Micro SD | Micro SD カードリーダー | Micro SD 카드 리더 | Micro SD 讀卡器 | Micro SD 读卡器

### 4. SD Card Reader

Lecteur de Cartes SD | Lector de Tarjetas SD | SD-Kartenleser | Lettore Schede SD | SD Kart Okuyucu | Czytnik Kart SD | Leitor de Cartões SD | Картридер Для MicroSD | SD カードリーダー | SD 카드 리더 | SD 讀卡器 | SD 读卡器

### IMPORTANT

IMPORTANT | IMPORTANTE | WICHTIG | IMPORTANTE | ÖNEMLİ | WAŻNY | IMPORTANTE | ВАЖНО | 重要 | 중요한 | 重要訊息 | 重要信息

• Ensure SD cards are properly formatted to support your host device OS.

• Assurez-vous que les cartes SD sont correctement formatées pour prendre en charge le système d'exploitation de votre appareil hôte.

• Asegúrese de que las tarjetas SD estén formateadas correctamente para admitir el sistema operativo de su dispositivo host.

• Stellen Sie sicher, dass die SD-Karten richtig formatiert sind, um das Betriebssystem Ihres Hostgeräts zu unterstützen.

• Assicurati che le schede SD siano formattate correttamente per supportare il sistema operativo del tuo dispositivo host.

• Ana cihaz işletim sisteminizi desteklemek için SD kartların doğru şekilde biçimlendirildiğinden emin olun.

• Upewnij się, że karty SD są prawidłowo sformatowane do obsługi systemu operacyjnego urządzenia hosta.

• Certifique-se de que os cartões SD estejam formatados corretamente para suportar o sistema operacional do seu dispositivo host.

• Убедитесь, что SD-карты правильно отформатированы для поддержки ОС вашего хост-устройства.

• ホスト デバイスの OS をサポートするために、SD カードが適切にフォーマットされていることを確認します。

• SD 카드가 호스트 장치 OS를 지원하도록 올바르게 포맷되었는지 확인하십시오.

• 確保 SD 卡已正確格式化以支持您的主機設備操作系統。

• 確保 SD 卡已正確格式化以支持您的主机设备操作系統。

• Transfer speeds may vary depending on host device & SD card capabilities.

• Les vitesses de transfert peuvent varier en fonction des capacités de l'appareil hôte et de la carte SD.

• Las velocidades de transferencia pueden variar según el dispositivo host y las capacidades de la tarjeta SD.