

# OUTSIDE



This device complies with part 15 of the FCC rules. Operation is subject to the following two conditions:  
 1. This device may not cause harmful interference and  
 2. This device must accept any interference received, including interference that may cause undesired operation.

**Note:** This Equipment has been tested and found to comply with the limits for a class B digital device, pursuant to Part 15 of the Federal Communications Commission (FCC) rules. These limits are designed to provide reasonable protection against harmful interference in a residential installation. This equipment generates, uses, and can radiate radio frequency energy and, if not installed and used in accordance with the instructions, may cause harmful interference to radio communications. However, there is no guarantee that interference will not occur in a particular installation. If this equipment does cause harmful interference to radio or television reception, which can be determined by turning the equipment off and on, the user is encouraged to try to correct the interference by one or more of the following measures:

- 1.1. Reorient or relocate the receiving antenna
  - 1.2. Increase the separation between the equipment and receiver
  - 1.3. Connect the equipment into an outlet on a circuit different from that to which the receiver is connected
  - 1.4. Consult the dealer or an experienced radio/TV technician for help
- Changes or modifications not expressly approved by the manufacturer could void the user's authority operate the equipment.



Satechi declares that this product is in compliance with the essential requirements and other relevant provisions of applicable EC directives. For Europe, a copy of the Declaration of Conformity for this product may be obtained by visiting [www.satechi.net/doc](http://www.satechi.net/doc)



According to the WEEE (Waste Electrical and Electronic Equipment) Directive, do not dispose of this product as household waste or commercial waste. Waste electrical and electronic equipment should be appropriately collected and recycled as required by practices established for your country. For information on recycling of this product, please contact your local authorities, your household waste disposal service, or the shop where you purchased the product.

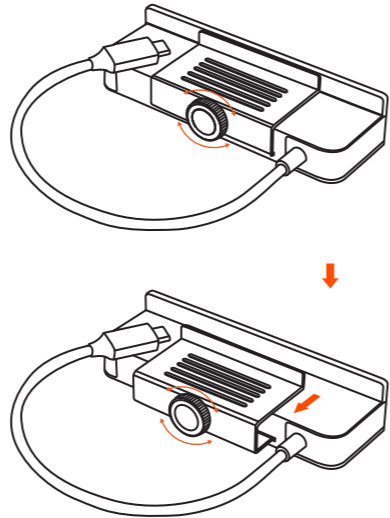
+1858 268 1800 support@satechi.com

## PLUG & PLAY

PLUG & PLAY | PLUG & PLAY | PLUG & PLAY | PLUG & PLAY | TAK ÇALIŞTIR | PLUG & PLAY | PLUG & PLAY | PLUG & PLAY | プラグ&プレイ | 플러그 앤 플레이 | 即插即用 | 即插即用

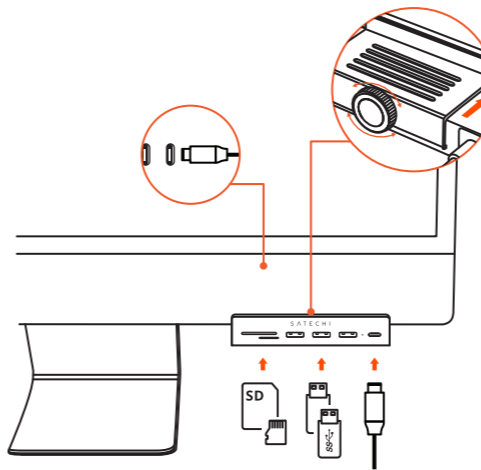
### 1. TURN THE KNOB TO ADJUST THE CLAMP TOURNER LE BOUTON POUR AJUSTER LA PINCE

GIRE LA RUEDILLA PARA AJUSTAR LA PINZA  
 DREHEN SIE DEN KNOPF, UM DIE KLEHME ZU EINSTELLEN  
 RUOTARE LA MANOPOLA PER REGOLARE IL MORSETTO  
 KISKACI AYARLAMAK İÇİN DÜŞMEYİ CEVİRİN  
 RODE O BOTÃO PARA AJUSTAR A BRACADEIRA  
 ПОВЕРНИТЕ РУЧКУ, ЧТОБЫ ОТРЕГУЛИРОВАТЬ ЗАЖИМ  
 ノブを回してクランプを調整します | 손잡이를 돌려 클램프를 조정하십시오  
 轉動旋鈕將輪軸固定到您的 IMAC | 轉動旋鈕調整夾子



### 2. TURN THE KNOB TO FASTEN THE HUB TO YOUR IMAC TOURNEZ LE BOUTON POUR FIXER LE HUB À VOTRE IMAC

GIRE LA RUEDILLA PARA FIJAR EL HUB A SU IMAC  
 DREHEN SIE DEN KNOPF, UM DEN HUB AN IHREM IMAC ZU BEFESTIGEN  
 GIRA LA MANOPOLA PER FISSARE IL MOZZO AL TUO IMAC  
 HUB'İ IMAC'INIZA BAĞLAMAK İÇİN DÜŞMEYİ CEVİRİN  
 RODE O BOTÃO PARA FIXAR O HUB AO SEU IMAC  
 ПОВЕРНИТЕ РУЧКУ, ЧТОБЫ ЗАКРЕПИТЬ ХАБ НА ВАШЕМ IMAC  
 ノブを回してハブを IMAC に固定します | 손잡이를 돌려 허브를 IMAC 에 고정  
 轉動旋鈕將輪軸固定到您的 IMAC | 轉動旋鈕將輪軸固定到您的 IMAC



### 3. CONNECT TO YOUR IMAC & DEVICES CONNECTEZ-VOUS À VOTRE IMAC ET À VOS APPAREILS

CONECTA TU IMAC Y TUS DISPOSITIVOS  
 VERBINDEN SIE IHREN IMAC & GERÄTE  
 CONNETTITI AL TUO IMAC E AI DISPOSITIVI  
 IMAC VE CİHAZLARINIZA BAĞLANIN  
 CONECTE-SE AO SEU IMAC E DISPOSITIVOS  
 ПОДКЛЮЧИТЕ К ВАШЕМУ IMAC И УСТРОЙСТВАМ | IMAC とデバイスに接続する  
 IMAC 및 장치에 연결 | 連接您的IMAC和設備 | 連接您的IMAC和设备



## USB-C™ CLAMP HUB FOR 24" IMAC USER MANUAL

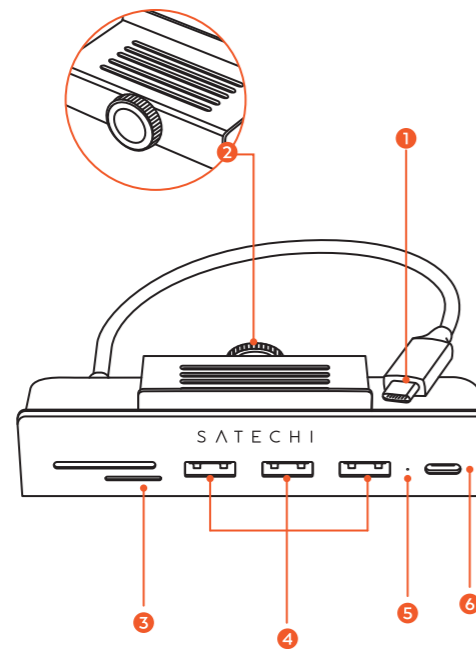


Manuel d'utilisateur | Manual de usuario | Bedienungsanleitung | Manuale dell'utente | Kullanım kılavuzu | Manual do usuário | Руководство пользователя | ユーザーマニュアル | 사용 설명서 | 用戶手冊 | 用戶手冊

# INSIDE

## FUNCTIONS

FONCTIONS | FUNCIONES | FUNKTIONEN | FUNZIONI | FONKSİYONLAR | FUNÇÕES | ФУНКЦИИ | 機能 | 기능 | 功能 | 功能



### 1. USB-C Cable

Câble USB-C | Cable USB C | USB-Kabel | Cavo USB C | USB C kablo | cabo USB C | USB-C Кабель | USB-C 케이블 | USB-C 케이블 | USB-C 接線 | USB-C 接線

### 2. Adjustable Clamps

Attaches Ajustables | Pinzas Ajustables | Anpassbare Klammern | Morsetti Regolabili | Ayarlanabilir Kelepçeler | Abraçadeiras Ajustáveis | Регулируемые зажимы | 調整クランプ | 調整 가능한 클램프 | 可調節夾 | 可調節夾

### 3. SD & Micro SD Card Slots

Fentes cartas SD et Micro SD | Ranuras de Tarjetas SD e Micro SD | SD und Micro SD Kartensteckplätze | Slot per schede SD e Micro SD | SD ve Micro SD Kart Yuvaları | Slots para cartão SD e Micro SD | Слоты для SD и Micro SD карт | SD & Micro SD 카드스롯 | SD 및 Micro SD 카드 슬롯 | SD和Micro SD卡插槽 | SD和Micro SD卡插槽

### 4. 3X USB-A Data Ports

Ports de données USB-A | Puertos de datos USB-A | USB-A-Datenanschlüsse | Porte dati USB-A | USB-A Veri Portları | Portas de dados USB-A | Порты данных USB-A | USB-A 데이터 포트 | USB-A數據端口 | USB-A數據端口

### 5. LED Indicator

Indicateur LED | Indicador LED | LED-Anzeige | Indicatore LED | LED göstergesi | Indicador LED | Светодиодный индикатор | LED インジケータ | LED 표시기 | LED 指示灯 | LED 指示灯

### 6. USB-C Data Port

Port de données USB-C | Puerto de datos USB-C | USB-C-Datenanschluss | Porta dati USB-C | USB-C Veri Bağlantı Noktası | Porta de dados USB-C | Порт передачи данных USB-C | USB-C 데이터 포트 | USB-C數據端口 | USB-C數據端口

## IMPORTANT

IMPORTANT | IMPORTANT | WICHTIG | IMPORTANTE | ÖNEMLİ | IMPORTANTE | ВАЖНО | 重要 | 중대한 | 重要事項 | 注意

### • USB-C Data Port will not support charging or video output.

• Le port de données USB-C ne prend pas en charge le chargement ni la sortie video.

• El puerto de datos USB-C no admitirá salida de carga o video.

• Der USB-C Datenanschluss unterstützt keine Lade- oder Videoausgabe.

• La porta dei dati USB-C non supporterà uscita di ricarica o video.

• USB-C Veri Bağlantı Noktası, şarj veya video çıkışını desteklemeyecektir.

• A porta de dados USB-C não suporta carregamento ou saída de video.

• Порт данных USB-C не поддерживает зарядку или вывод видео.

• USB-C 데이터 포트는, 충전 또는 비디오 출력을 지원하지 않습니다.

• USB-C 數據端口不支持充電或視頻輸出。

• USB-C 數據端口不支持充電或視頻輸出。

### • Do not connect more than one external hard drive at a time.

• Ne connectez pas plus d'un disque dur externe à la fois.

• No conectar más de un disco duro externo a la vez.

• Schließen Sie nicht mehr als eine externe Festplatte gleichzeitig an.

• Non collegare più di un disco duro esterno alla volta.

• Aynı anda birden fazla harici sabit sürücü bağlamayın.

• Não conecte mais de um disco rígido externo por vez.

• Не подключайте более одного внешнего жесткого диска одновременно.

• 一度に複数の外付けハードドライブを接続しないでください。

• 한 번에 두 개 이상의 외장 하드 드라이브를 연결하지 마십시오.

• 不要一次連接多個外部硬盤驅動器。 | 不要一次連接多個外部硬盤驅動器。

### • SD card and micro SD card won't read simultaneously

• La carte SD et la carte micro SD ne lisent pas simultanément.

• La tarjeta SD y la tarjeta micro SD no se leen simultáneamente.

• SD-Karte und Micro-SD-Karte werden nicht gleichzeitig gelesen.

• La scheda SD e la scheda micro SD non vengono lette contemporaneamente.

• SD kart ve mikro SD kart aynı anda okunmuyor.

• O cartão SD e o cartão micro SD não são lidos simultaneamente.

• Карты SD и Micro SD не читаются одновременно.

• SDカードとマイクロSDカードは同時に読み取れません

• SD 카드와 마이크로 SD 카드는 동시에 읽지 않습니다.

• SD卡和micro SD卡不能同時讀取 | SD卡和micro SD卡不能同時讀取。